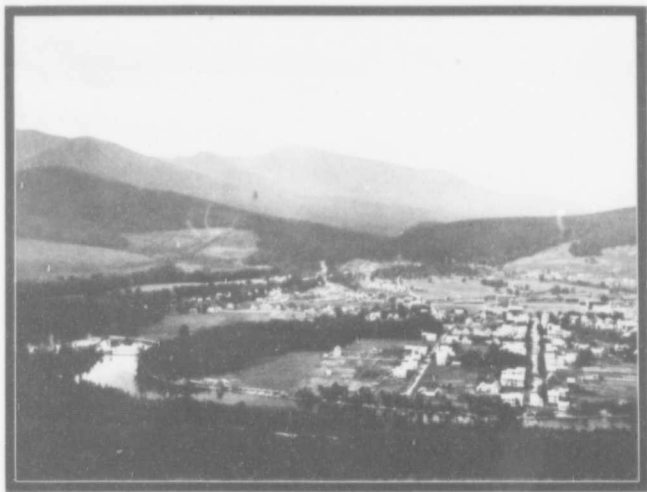


cended by a footpath leading to the summit in about two hours. The view from the top of this mountain is something magnificent. Mounts Adams and Jefferson are in full view, and Mount Washington is seen to better advantage than from any other point.

White
Mountains

Mount Washington (6,293 feet), looking out from beyond, a head taller than all the others, is the mountain monarch of the north, about whose summit, veiled in clouds and darkness, the thunder god occasionally holds his turbulent court. From the base of Mount Washington can be seen the five highest peaks of the range. Mount Washington may be ascended by means of a mountain railway which operates to the summit, the view from which is awe-inspiring and wonderful. And so on to Portland, Me., with varied mountain scenery for many miles. Good accommodation is available at all points, and for the fisherman, the streams are bounteously supplied. Complete description of this country is published in our "Moun-



GORHAM, N. H., GATEWAY TO THE WHITE MOUNTAINS.

tains of New England and the Sea" folder, available from any agent of the Grand Trunk.

Portland,
Maine

Portland, Me., "the beautiful city by the sea," so poetically named by Longfellow, is the eastern terminus of the Grand Trunk Railway System, where train Number Four stops and train Number Three starts for its run to Chicago and the Great Lakes. All the resorts on the Maine coast are