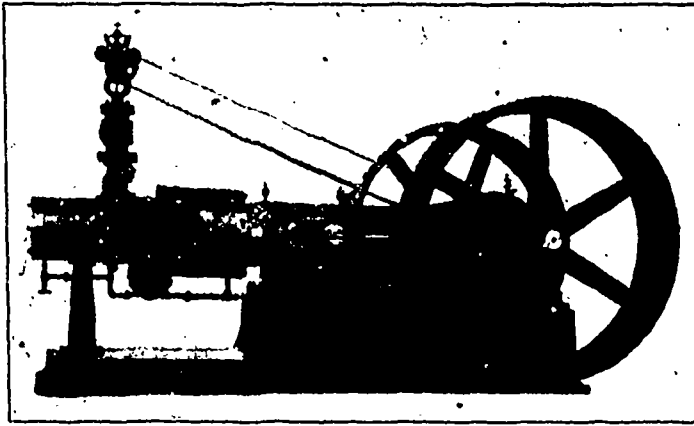




**OUR EXTRA
HAND-MADE
AXE**

This Axe stands better in frosty weather than any axe made. . . . Send for sample. Can supply any pattern.

CAMPBELL BROS.
Mfrs.
St. John, N.B.



**The Hardill
Compound Engine**

Medium Speed

Simplified Valves

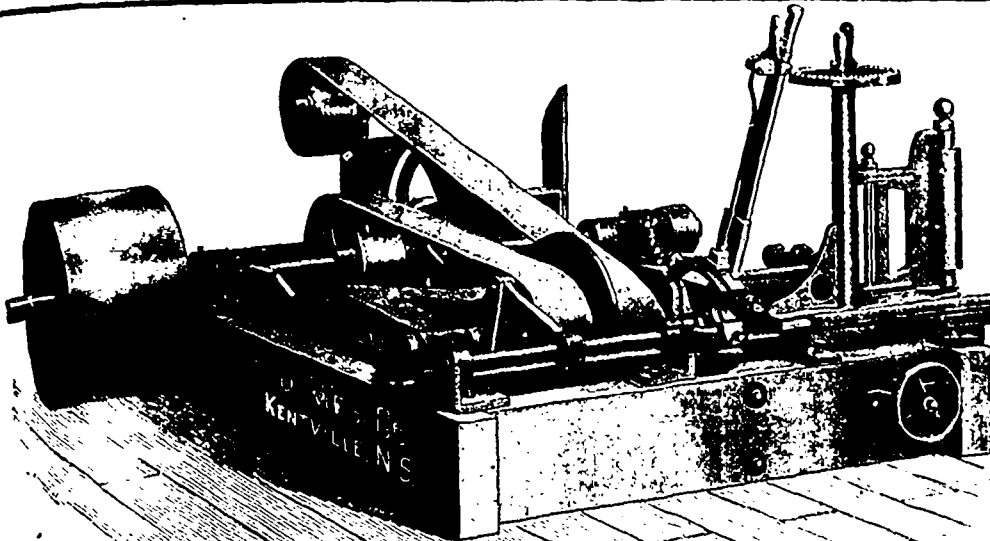
Universal Application

Perfect Design

Built in all cases by

**THE HARDILL COMPOUND ENGINE CO.,
OF MITCHELL, ONT., LIMITED**

Economy,
Durability, Simplicity, Small Cost.
All Steam Users are interested.
Send for Catalogues and Prices.



**Lloyd Manufacturing
Co'y** JOHN I. LLOYD, Proprietor.

SAW MILL OUTFITS

Pulp Machinery, Belting, Etc.

OUR SPECIALTIES:

Band Saw Mill Machinery, Improved Rotary Saw Mills, with Green Mountain Dogs, Also Screw Post Dogs, Turbine Water Wheels, Power Feed Gang Edgers, Buzz and Surface Planers, Heading Rounders, Stave Machines, Stave Jointers, Stave Planers.

KENTVILLE, N. S.

CABLEWAYS

Our **Hoisting Engines, Cable Carriages** and other apparatus are specially adapted for the work.

There are more of our Cableways in use than any other.



SEND FOR CATALOGUE
AND ESTIMATES

N. P. Macmullan & Co., Limited, 773 Craig Street, MONTREAL