

School. Thus leaving the two Ward Schools for the smaller pupils in the Primary and Second Forms.

The School accommodation at present, and for some time to come, are as follows: The Central School, with Six Rooms, and two unoccupied ones, and two Ward Schools.

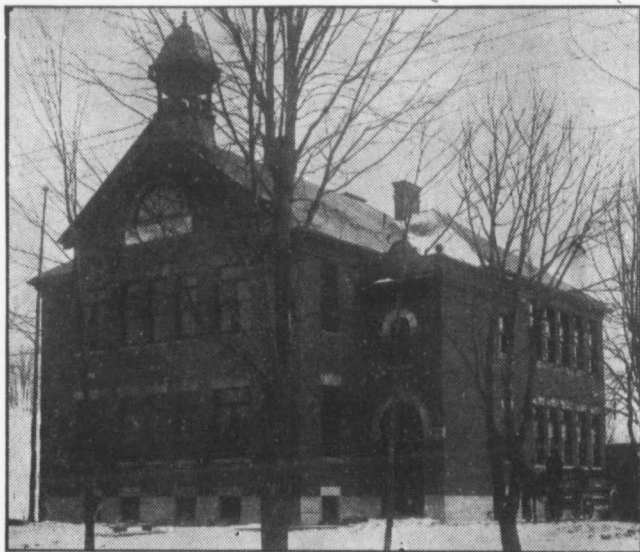
The number of Pupils, whose names are on the Rolls is 216, with an average attendance of 185.

MERRITTON, December 21st, 1909.

R. CLARK, *Secretary*.

THE SCHOOLS OF PETROLEA.

Petrolea dates its History from the year 1842, but its real rise started with the finding of Petroleum. In those days the Town was situated east of Bear



CENTRAL SCHOOL, PETROLEA.

Creek, when the Children attended in a Frame School House. Soon the Town grew west of the Creek, and School Houses were built there. In 1879 the Frame School House was burnt, and in its place the Central School was built on Greenfield Street about 1883, and was well attended. In 1885 a Two-Roomed Brick School House was built on Eureka Street, followed by a similar Brick Building on Maud Street. In a few years the School on Maud Street was enlarged by the placing of another Storey on it. This made it a commodious and substantial