

# Suction Gas Producer Plants FOR MANUFACTURERS

**Cheaper than Water, Simpler than Steam**

Let us quote you on units from 10 to 10,000 horse power

**CANADA FOUNDRY COMPANY, Limited**

Head Office and Works: **Toronto, Ont.**

District Offices:— Montreal Halifax Winnipeg Ottawa Vancouver Rossland

**EUGENE F. PHILLIPS ELECTRICAL WORKS**  
MONTREAL - CANADA - TORONTO LIMITED

**Bare and Insulated Electric Wire**

Electric Light Line Wire, Incandescent and Flexible Cords,

**Railway Feeder and Trolley Wire**

Americanite, Magnet, Office and Annunciator Wires,  
Cables for Aerial and Underground Use.

LONG DISTANCE PHONE 1103.

**The Electrical Construction Company of London, Limited**

32-40 Dundas St., London, Can.

Perfection TYPE **DYNAMOS and MOTORS**

Multipolar or Bipolar, Direct-Connected or Belted.

**OVER 1500** OF OUR MACHINES IN USE

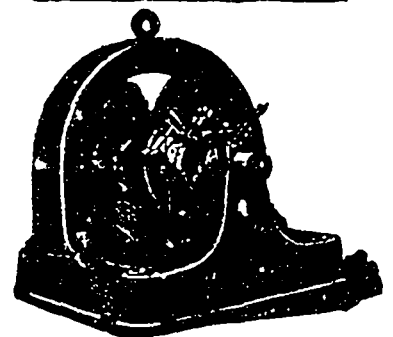
We contract for complete installations, including wiring of factories.

We repair machines of any make.

Descriptive matter and estimates furnished on application.

Branches at Vancouver, Winnipeg, Toronto, Montreal, Halifax

**TORONTO and HAMILTON  
ELECTRIC CO.**



**MOTORS and DYNAMOS**

MODERATE and SLOW SPEED OF HIGH EFFICIENCY.

EITHER BELTED OR FOR DIRECT CONNECTION.

REPAIRS PROMPTLY EXECUTED ON ALL ELECTRICAL APPARATUS.

**T. & H. ELECTRIC CO.**

99-103 McNAB N., - HAMILTON, ONT.

**MOTORS, DYNAMOS,  
FIXTURES, SHADES,  
HEATING APPARATUS,  
TRANSFORMERS,  
TELEPHONES, Etc.**

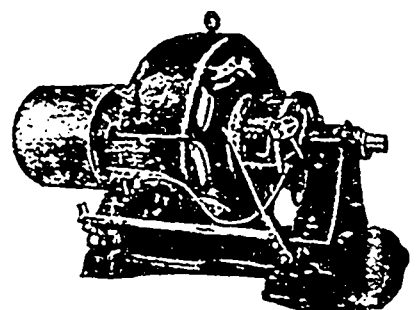
**JOHN FORMAN**

248-250 Craig St. W., - MONTREAL

**The Jones & Moore**

ELECTRIC CO., Limited

ELECTRICAL CONTRACTORS



DYNAMOS, TELEPHONES, SLOW  
SPEED MOTORS, MOTORS, SUPPLIES,  
DIRECT CONNECTED DYNAMOS.

We manufacture Direct Current Machinery in  
all sizes and for any purpose.

**196 ADELAIDE WEST,  
TORONTO.**