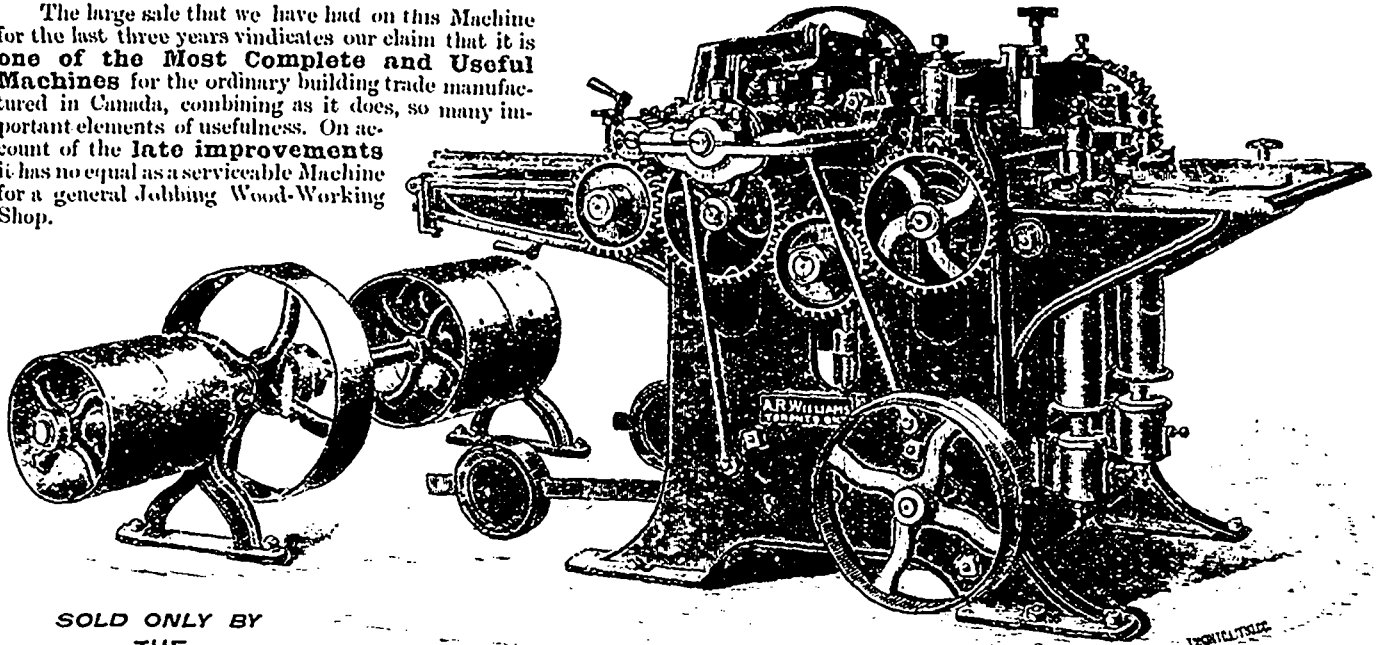


# IMPROVED "ECLIPSE" PLANER, MATCHER and MOULDER

The large sale that we have had on this Machine for the last three years vindicates our claim that it is **one of the Most Complete and Useful Machines** for the ordinary building trade manufactured in Canada, combining as it does, so many important elements of usefulness. On account of the **late improvements** it has no equal as a serviceable Machine for a general Jobbing Wood-Working Shop.



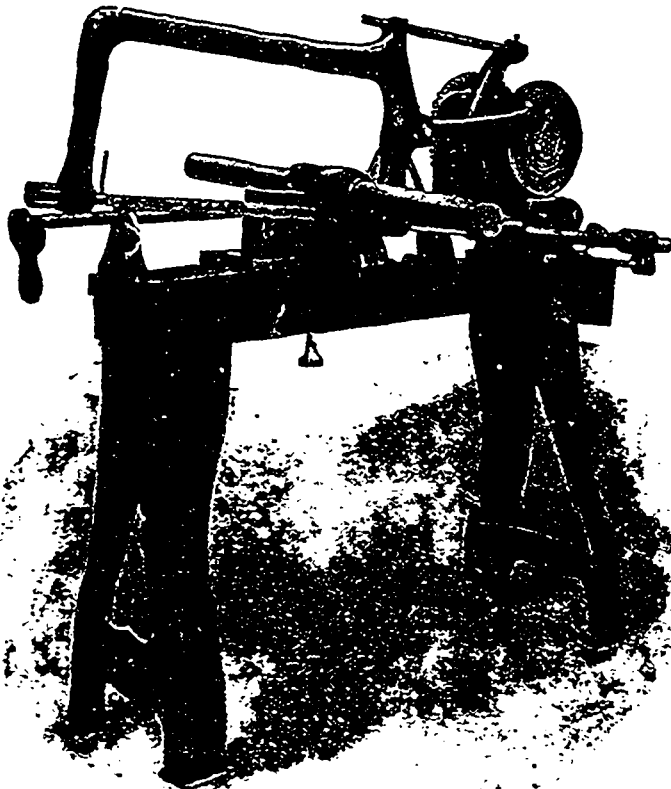
SOLD ONLY BY  
THE

**A. R. WILLIAMS MACHINERY CO., Limited, Toronto**

Manufacturers, Importers and Dealers in

**ENGINES, BOILERS AND MILL MACHINERY SUPPLIES**

## Robertson's Rapid Cut Power Saw No. 3



One of the four sizes we build.

Capacity 8x8 inches.

Round or square; hard or soft metals.

Angles. T. Rails. I. Beams.

Tubes, etc.

There is no tool or method to compete as cost knockers. They do 40% more work than any other with the same blade. They are automatic, start them going, they do the rest, stop when complete.

No. 3 and 4 cut gear driven. Used in the largest shops all over the world.

Sold by hardware and machinery dealers.

—MADE BY—

**THE ROBERTSON MFG. CO.,**

**BUFFALO, N.Y.**

AND BRIDGEBURG, CANADA

Main Office—BUFFALO.

Get our folders and prices.

When writing to Advertisers kindly mention THE CANADIAN MANUFACTURER.