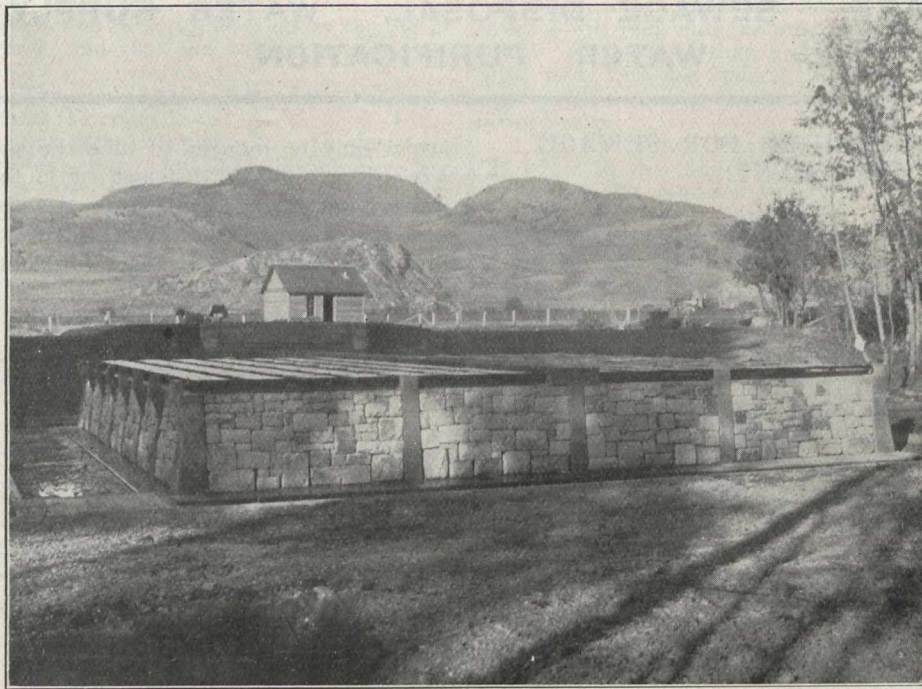


filter, and the purified effluent is then discharged into the creek.

Sludge beds and drains are also provided for prompt, economical and efficient treatment of the tank sludge.

It was thought at first that in the comparatively mild climate of that territory, the filters would possibly operate un-

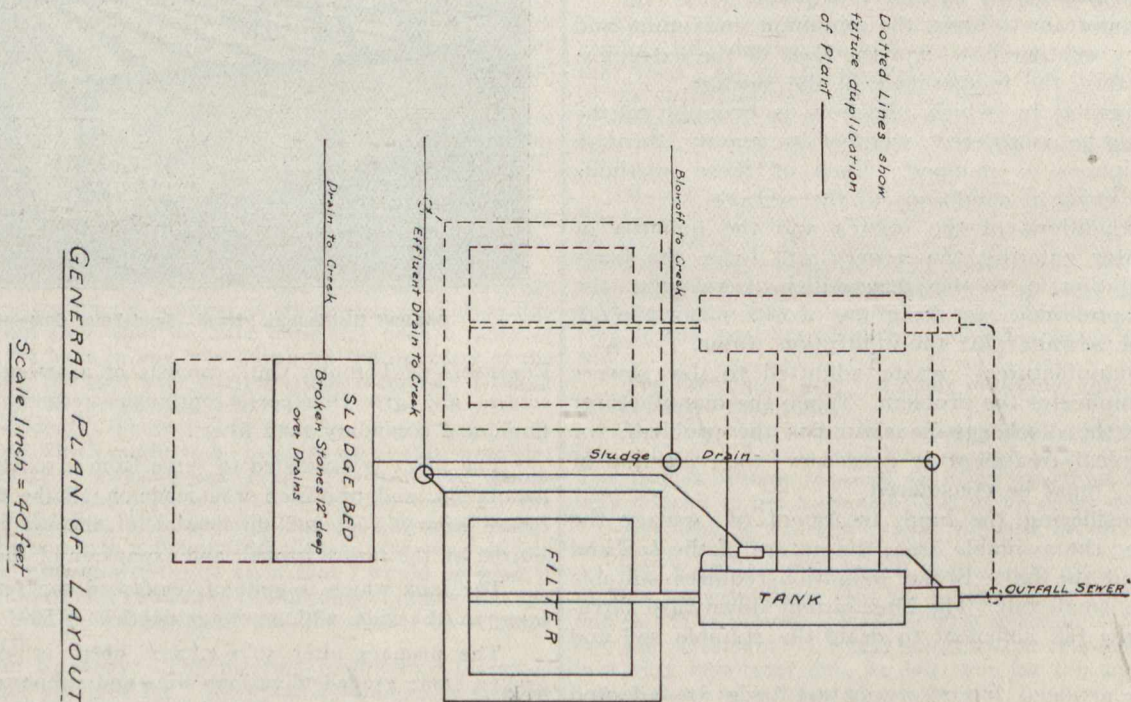
Burning of sludge can only be restored to where refuse destructors are in use, and even then involves the pressing of the sludge before it is mixed with the house refuse. From this it will be gathered that the cost of the process is high, but there is a by-product in the form of clinker, and the sludge is, at any rate, entirely got rid of.



Finished Filter.

protected successfully throughout the winter season. Observation and experience showed, however, that frost conditions were severe enough to demand some protection, and a frost

In addition to these methods there is another, not mentioned by the Royal Commission, of mixing the sludge with house refuse. The mixture dries at a fairly rapid rate.



casing (not shown in the illustrations) was designed and installed about the filters. This casing is so constructed that it admits of easy removal and replacing.

there is very little, if any, nuisance from smell, and the result is a good manure, easily handled, and suitable for sale to farmers.