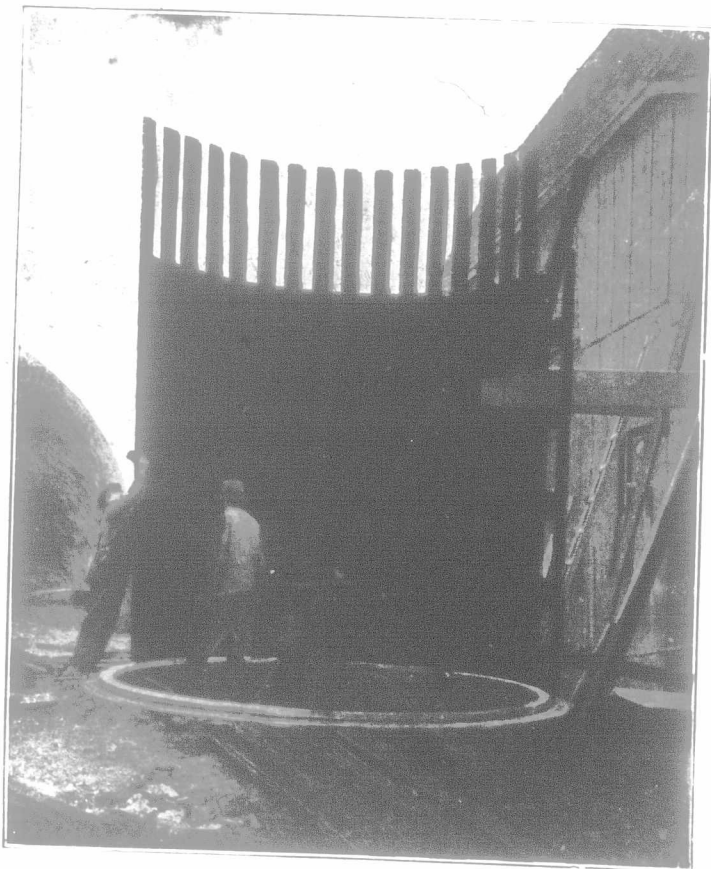
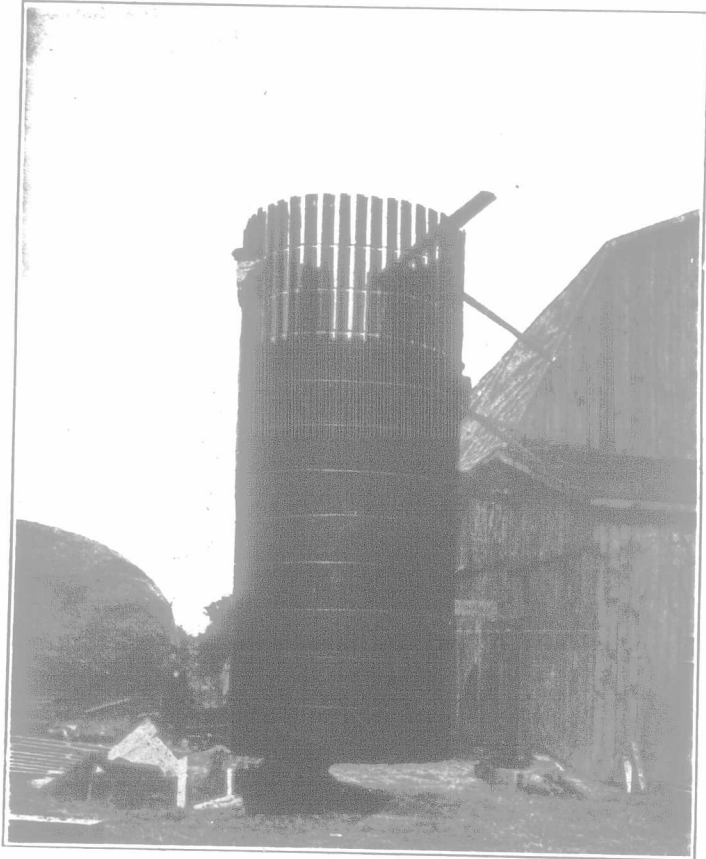
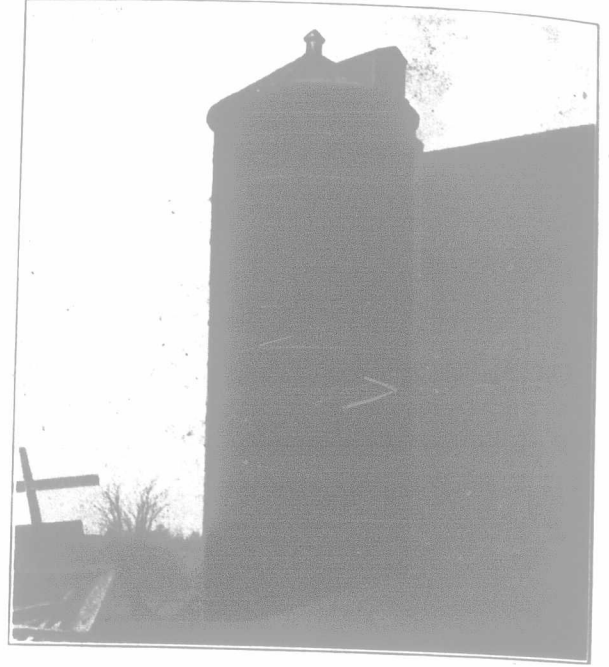


BURLINGTON

Cable-Band Silo

The Silo
That Goes Up
Without Trouble



"BUILD A SILO"

Dairy feeds are soaring high—

Build a Silo.

Summer seems a-goin' dry—

Build a Silo.

Cows, too, go dry on hay.

Sort of seem to fall away;

They need silage every day—

So build a Silo.

Pasturage costs quite a heap—

Build a Silo.

Winter feeds are never cheap—

Build a Silo.

Build a BURLINGTON CABLE BAND.

Easy to erect—everything to hand—

You'll have one that'll always stand—

So build a Silo.

That's the burden of my song—

Build a Silo.

If you've cows you can't go wrong—

Build a Silo.

Milk will flow and smiles'll come

With the separator's hum.

And you'll shout "I'm glad, by gum,

I built a Silo."



Note our patented cable bands—the most important feature of the Burlington Silo. They give and take when Silo contracts or expands due to weather conditions. They are made of 1/2-inch steel cable, nearly twice the strength of the iron rods ordinarily used.