

Musical and Social.

The Elmira Musical Society.

AS MAY be surmised, when it is known that the great majority of Elmira's citizens are of German descent, music is a predominating feature in their social intercourse. Their inborn love of music

finds expression in play and song of a high order in their homes and churches and in their entertainments. Since the year 1873, when the first brass band was organized, there have been few years, indeed, when Elmira has not counted amongst its institutions a good band or orchestra, or both.

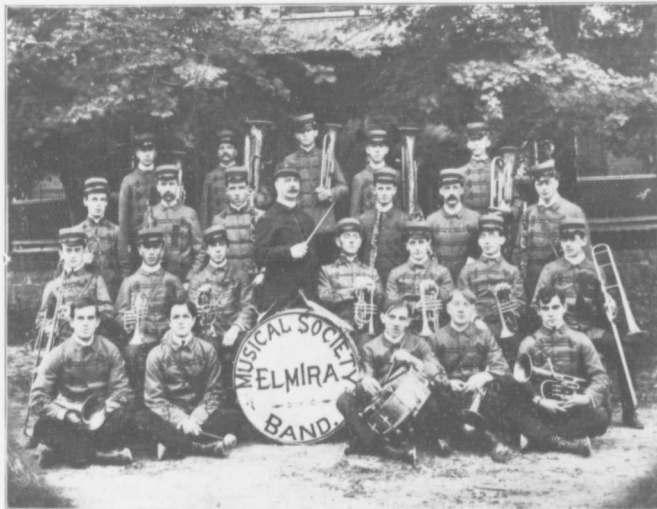
With the object of furthering the interests of music and regulating the movements of an organized band, the Elmira Musical Society was organized in the year 1892. This Society now has over 100 members who pay a fee annually. It controls the largest hall in the village, and receives a grant from the village Council.

The movements of the band are controlled by the Society. Engagements entered into, in the neighboring towns and villages, by them, are invariably satis-

factory, since wherever the Elmira Musical Society's Band goes, there will be good music, good song and good cheer.

The Society has been fortunate in the choice of their leader, Mr. Henry Restorff, of New York, a director of international reputation, under whose leadership the band has made excellent progress. Of Mr. Restorff's career as a musician, a New York Musical sheet says:—

"Mr. Henry Restorff, the Conductor of the Metropolitan Concert Band, is one of the best known musicians in Greater New York. He was born at Reudsburg, Germany, in 1858, at which place he commenced his musical studies at the age of 7 years under the best masters in Europe. In 1873 he accepted his first professional engagement at the 'Stadt-Theatre' in Kiel. His talents were quickly recognized and other important engagements soon followed. He filled an engagement at the principal Theatre in Munich, after which he transferred his services to Hamburg, Colonia and many other large European cities. In 1880 Mr. Restorff came to the United States to add to the



THE ELMIRA MUSICAL SOCIETY'S BAND.

HENRY RESTORFF, Director.

E. Vollick,	Geo. Pfaff,	Henry Pfaff,	W. Schierholtz,	M. Schumaker,
Paul Ruppel,	P. Stumpf,	Dr. Kallfleisch,	S. Yost,	Amasa Winger,
Fred Jackson,	R. Trussler,	D. Vollick,	C. Treisinger,	Dr. Ratz,
W. Heckendorn,	Gordon Otis,	John Hedrich,	A. Pfaff,	H. Dahmer,
			Henry Weichel,	Oscar Ruppel,
				Henry Strone,