

### Claireville conservation area opening

ETOBICOKE — About 2,400 people visited the new Claireville conservation area on June 21, the day it was officially opened, but officials of the Metropolitan Toronto and Region Conservation Authority expect attendance there to rise sharply with hot, mid-summer weather and increased public awareness of the new area.

They point out that the area can handle up to 15,000 visitors engaged in activities such as swimming, picnicking and boating on its 1,600 acres of open space.

Claireville is perfect for such activities with its 120-acre man-made lake built by the Authority under its flood control and water conservation program.

Canoes, sailboats and rowboats may be used on the lake, but motor-powered boats are banned.

Claireville is located off Highway 7, west of Highway 50 and just east of Malton. Because of the newness of the area, officials stress to visitors that it must be entered from Highway 7.

The area is open from 10 a.m. to 6 p.m. Monday to Friday and stays open one-half hour later on weekends and holidays during July and August.

Here is a list of summer time facilities for the public at the MTRCA 12 other conservation areas and their locations:

Albion Hills, five miles north of Bolton on No. 50 Highway—group camping, family camping, swimming, fishing, nature trails and refreshment facilities.

The Black Creek Pioneer Village is also of interest to young and old alike. This showcase of pioneer Canada is located at Jane St. and Steeles Ave. in Northwest Metro Toronto and consists of more than 20 restored buildings including a flour mill. Visitors can also have a snack or meal in the pioneer tradition at Half Way House restaurant.

Road area, just north of Woodbridge—group camping, swimming, nature trail and refreshment facilities.

Bruce's Mill, two miles east of Don Mills, road on the Gormley-Stouffville road—group camping, swimming, fishing, nature trail and refreshment facilities.

Claremont area, in Pickering Township, 1 1/2 miles north of Highway 7 on 10 sideroad—group camping, fishing, nature trail and refreshment facilities.

Cold Creek, located between Bolton and Nobleton on the King sideroad—primarily for sportsmen and naturalists, has trap, rifle and archery ranges and a famous black spruce bog—also family camping, and refreshment facilities.

Glen Haffs, located near Mono Mills and Highway 9—group camping, boating, fishing, nature trail and refreshment facilities.

Greenwood area, four miles north of Pickering on the Greenwood road—group camping, swimming, fishing, nature trail and refreshment facilities.

Heart Lake, east of Brampton—group camping, swimming, boating, fishing, nature trail and refreshment facilities.

Humber Trails, located south of the King City sideroad just off Nobleton and west of Highway 400—group camping and fishing.

Palgrave forest and wildlife area, located north of Highway 50 on 25 sideroad, west to the Humber river and north 1 1/2 miles—fishing and nature trail.

Lower Rouge area, located at the mouth of the Rouge River in Pickering Township—swimming, fishing and refreshment facilities.

Further information on these areas may be obtained by contacting Authority offices at 889-5425.

# Have a good answer ready when they ask... "WHAT'S FOR DINNER?"



Roast or steak? Chops or chicken? Spareribs or seafood? You know what your family prefers! Whatever their favorites, we have them for you at money-saving prices. We're featuring a wide variety of fine meats and go-withs to make meal planning easy. Be set with their favorite answers to the question of "what's cooking?" Shop now at Safeway where top quality and low prices give you more for your money.



Feature buys in our Meat Section!

**FRESH**

## Roasting Chickens

Canada Grade "A" lb. **39<sup>c</sup>**

4 lbs. and Up

- Pork Butt Chops Fresh Lb. **69c**
- Side Bacon Swift's Sliced Lazy Maple or Premium Lb. **89c**
- Ground Chuck Safeway Guaranteed Quality Lb. **69c**
- Cottage Rolls Burns Lb. **69c**
- Corned Beef Maple Leaf (4 2 oz. Pkgs.) **99c**
- Burns Wieners or Swift's Pkg. **59c**
- Schneider's 5 Varieties Luncheon Meats 3 6 oz. Pkgs. **\$1**
- Sandwich Spreads Swift's Meat 3 8 oz. Packs **\$1**

## Chuck Steaks

Red or Blue Brand Beef

lb. **69<sup>c</sup>**

SHOPPY'S SALADS

COLESLAW POTATO 12 oz. Cups **39<sup>c</sup>**

**FRESHLY BAKED IN OUR INSTORE BAKERY**

**CAKE OF THE WEEK**

DESSERT CAKE each **85<sup>c</sup>**

Cinnamon Buns Pkg. of 8 **45c**

Jelly Rolls each **45c**

Coffee Rings each **45c**

Assorted Muffins 6 FOR **35c**

Asstd. Rye Breads each **29c**

★ SPECIAL ★

## Canned Pop

Mason's Asstd. Flavours **\$1.63**

Case of 24 10 fl. oz. Tins

**SAFeway VALUES**

- Niblet Corn Green Giant 12 oz. Tin **19c**
- Wax Beans Aylmer Fcy. Grade 14 fl. oz. Tin **21c**
- Mushrooms Gardendale Stems & Pieces 10 oz. Tin **38c**
- Beans Heinz in Tomato Sauce 14 fl. oz. Tin **24c**
- Chili Con Carne Taste Tells Mild or Hot 14 fl. oz. Tin **37c**

**DAIRY VALUES**

- Yogurt Sealtest Swiss 6 oz. Ctn. **20c**
- Sour Cream Sealtest Pint Ctn. **54c**
- Cottage Cheese Sealtest Creamed 16 oz. Ctn. **39c**
- Milk Sealtest Fresh Homogenized 1/2 Gal. Ctn. **60c**
- Orange Juice F.B.I. 100% Pure From Concentrate Btl. Qt. **47c**

★ SPECIAL ★

## Safeway Coffee

All Purpose 1 Lb. Pkg. **79<sup>c</sup>**

10c Off

**EVERYDAY LOW PRICES**

- Tomato Juice Town House Cda. Fcy. 48 Fl. oz. Tin **27c**
- Garden Cocktail E. D. Smith's Jars 28 fl. oz. **29c**
- Apple Juice Choice Unswt. F.B.I. 48 fl. oz. Btl. **39c**
- Orange Juice Bel-Air Frozen Concentrate 4 6 fl. oz. Tins **89c**
- Sunny Limeade Frozen 2 6 fl. oz. Tins **29c**

★ SPECIAL ★

## Facial Tissue

Truly Fine

Box of 400 2 Ply Tissues

**3 boxes 89<sup>c</sup>**

**EVERYDAY LOW PRICES**

- Butter New Dundee Cda. #1 Grade 1 Lb. **67c**
- Baby Food Gerber's 6 5 fl. oz. Strained Jars **79c**
- Baby Cereal Heinz 8 oz. Box **33c**
- Evap. Milk Carnation 2 1 Lb. Tins **33c**
- Coffee Mate Carnation 11 oz. Jar **84c**
- Cake Mixes Duncraft Hines 18 oz. Box **49c**
- Five Roses Flour 10 Lb. Bag **\$1.09**
- Macaroni Dinner Kraft 7 1/2 oz. Pkg. **16c**

**SAVE AT THESE LOW PRICES**

- Instant Coffee Sanka 4 oz. Jar **\$1.18**
- Tea Bags Salada Orange Pekoe 80's **74c**
- Pie Filler E.D. Smith's Apple 19 fl. oz. Tin **41c**
- Soda Biscuits Busy Baker 1 Lb. Pkg. **42c**
- Bread Grain of Gold 24 oz. Loaf **22c**
- Mini Chips Christie's 5 oz. Box **47c**
- Facial Tissue Kleenex 400's 3 BOXES **\$1**
- Tide Detergent Giant Size **99c**

**SAFeway FRESH PRODUCE**

## Plums

Santa Rosa Produce of U.S.A. Canada No. 1 Grade

LB. **25<sup>c</sup>**

## Bananas

Chiquita or Cabana

LB. **12<sup>c</sup>**

Cabbage

Ontario Grown Canada #1 2 LBS. **19<sup>c</sup>**

Carrots

Produce of U.S.A. Canada #1 3 LB. BAG **35<sup>c</sup>**

★ SPECIAL ★

## Beans with Pork

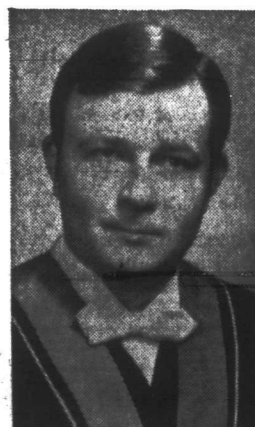
Taste Tells

14 fl. oz. Tin **6 tins \$1**

**CEREAL VALUES**

- Frosted Flakes Kellogg's 18 oz. Pkg. **53c**
- Rice Krispies Kellogg's 18 oz. Pkg. **44c**
- Wheat Nabisco 15 oz. Pkg. **38c**
- Newport Foods 8 Qt. Bag **53c**

### Graduate



**John Stephen Fryer** of Mississauga, received his Bachelor of Science Degree in Electrical Engineering from the University of Waterloo, May 20, 1969. He is the son of Mr. J. D. Fryer of Mississauga, with the Company.

We Reserve The Right To Limit Quantities

# SAFeway

© COPYRIGHT 1960. CANADA SAFeway LIMITED

Located in Shoppers World, Highway #10 & Steeles — Brampton

Store Hours 9 a.m. to 10 p.m. Daily Prices Effective July 6th thru July 11th