

Specially engraved for Massey's Illustrated. Photo, by W. E. H. M.

JAPANESE TEA HOUSE, SWEDISH RESTAURANT AND FISHERIES TOWER IN BACK GROUND.

machines and implements—in fact, they are the only single concern showing a complete line of farm machines.

The *Dominion Illustrated* thus describes the exhibit of MASSEY-HARRIS Co., Ltd.:

This great Farm Implement Company occupies the largest space in the Agricultural Building allotted to any one concern, their exhibit comprising a complete line of agricultural implements, all being fully in keeping with the great enterprise and business sagacity which have characterized this organization, and which have opened up channels of trade in all parts of the world. A large and handsome British ensign surmounts the exhibit, and bears in large white letters the significant words: "Largest Makers under the British Flag." An array of upwards of 100 foreign and colonial flags radiate from this central banner, and they are intended to indicate that the Massey-Harris Co. do business in each country so represented by its pennant. Probably there is no other firm in the world that can make a similar boast.

In the centre of the court stands a handsome office made of native Canadian wood. The panels below are artistically filled in with specimens of the various woods and also iron and steel parts which enter into the construction of the machine, including specimens of castings, steel forgings, knives and knife sections, which are made by the Company from raw materials. The plate glass windows are richly draped, and surmounting the cornices of the structure are gilded Reaper finger bars. Surrounding this office is arranged the Company's large exhibit of sixty or more implements on a carpeted floor, the court being enclosed by a handsome nickel railing. The implements are of much beauty and design, and are very richly finished. The machines attracting special attention are the Massey-Harris Wide-Open Binder, Toronto Mower, Brantford Mower, Massey-Harris Cultivator, Sharp's Hay Rake—all of which are elegantly plated and beautifully finished. The wood entering into the construction of these machines is all native Canadian, and being finely polished, attracts much attention. The other implements are all handsomely painted in the same colors which they are usually painted for sale. Many of the machines are shown in full motion.

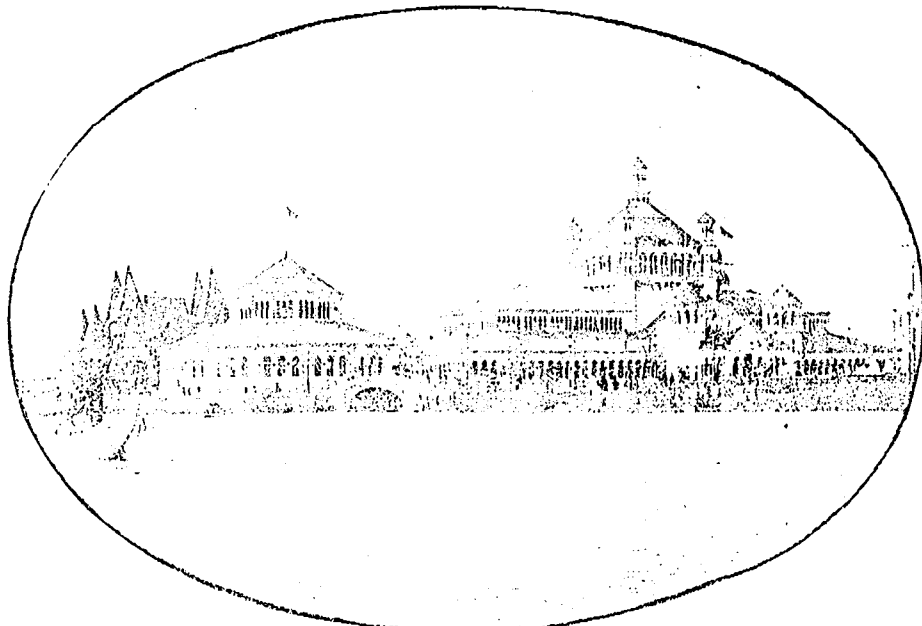
Another feature of the exhibit is a large showcase containing the many trophies and medals won by the Company at field trials in various parts of the world.

Visitors at the stand receive the most courteous attention, and a large number of comfortable chairs have been provided for their convenience. Further, writing materials are placed at the disposal of callers, and many Canadians avail themselves of the opportunity of having their mail addressed in care of the Company (Section E 13, Agricultural Annex.) Canadians are cordially invited to make themselves at home at the Company's stand, which is conveniently located and a desirable place to make appointments, &c. A Visitors' Register is kept.

In addition to the implements made by the Company, they also display on their stand a handsome Thresher and Engine made by Sawyer and Massey Co., Hamilton. Many parts of the Engine are silver-plated and some of them finished in polished brass, while the Separator has sides of highly finished birch with panels of white wood, one side being pannelled with bevelled plate glass, and the interior illuminated with incandescent electric lights, showing all the working parts which are in full motion and run almost as noiselessly as a watch.

The Company also show a full line of Plows made by the Verity Plow Co., Ltd., of Brantford.

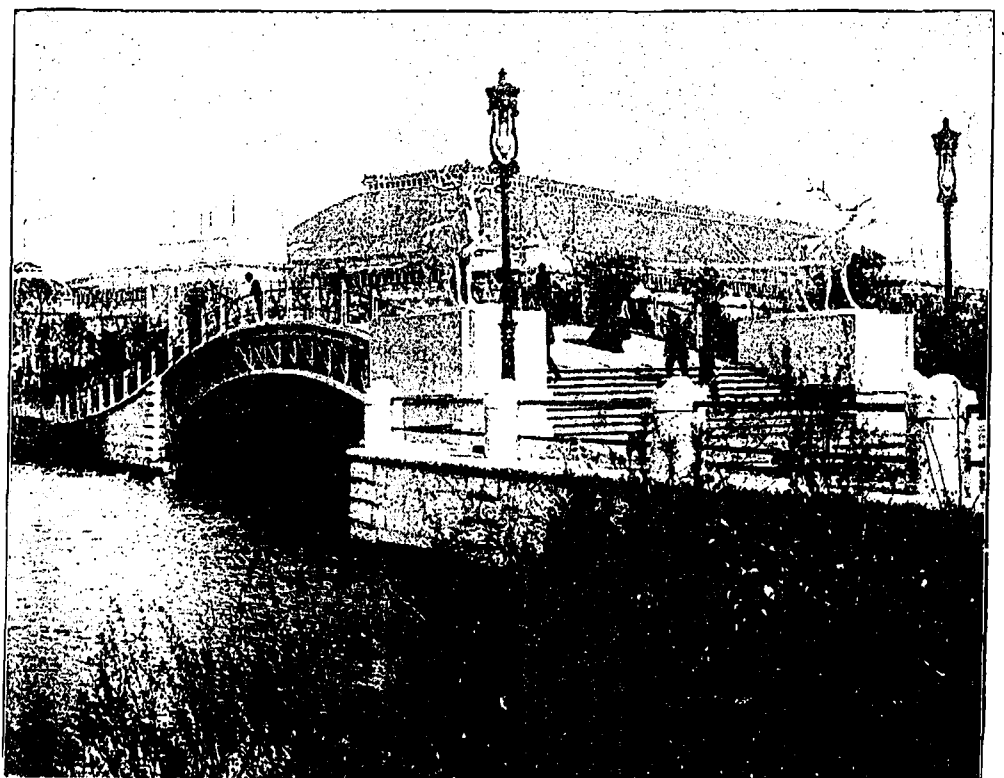
This very extensive and complete exhibit made by Massey-Harris Co.—as one can easily understand,—is attracting much attention, especially from American and European exhibitors and experts. By its means Canada is being well advertised and in a way that is sure to lead to good results.



Specially engraved for Massey's Illustrated. Photo, by W. E. H. M.

THE FISHERIES BUILDING.

Over 45,000 machines and implements were produced by MASSEY-HARRIS Co., Ltd., for the season of 1900. A large proportion of the annual output goes to foreign countries—a trade which is continually on the increase, and which cannot but be of great value to the Dominion. Most of the material used by this company are home products.



Specially engraved for Massey's Illustrated. Photo, by W. E. H. M.

VIEW IN THE PARK LOOKING TOWARDS THE GREAT MANUFACTURERS' BUILDING.