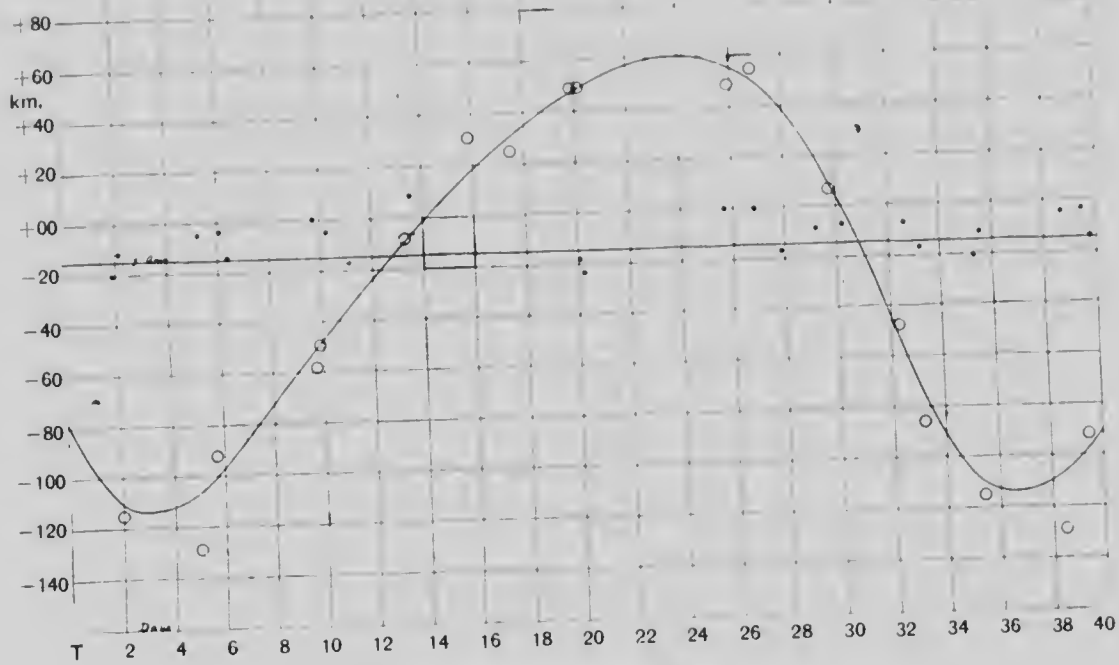


The final elements with their probable errors are

P = period	= 3.3372 days	+ 0.00023
e = eccentricity	= .2326	+ 0.022
ω longitude of periastron	= 125.67	+ 7.08
K = semi-amplitude	= 87.70 km.	+ 2.68
T = periastron passage	= J.D. 2,422,151.272	+ 0.0623
γ = velocity of system	= -15.13 km.	+ 1.79
V = velocity of Calcium	= -9.1 km.	+ 1.39
$a \sin i = 3,910,000$ km.		

$$\frac{m_1^3 \sin^3 i}{(m+m_1)^2} = 0.215 \odot$$



Radial Velocity Curve of H.R. 8800

Open circles represent normal places. Small circles represent velocities from H and K lines

Dominion Astrophysical Observatory.

Victoria, B.C.

August 26, 1920.