

of the disease are very slight, although the fibrous roots may at this time be covered with the little swellings; but if the attack is severe, the second year the leaves assume a sickly yellowish cast, and the usual vigorous yearly growth of cane is much reduced. Eventually the vine usually dies,

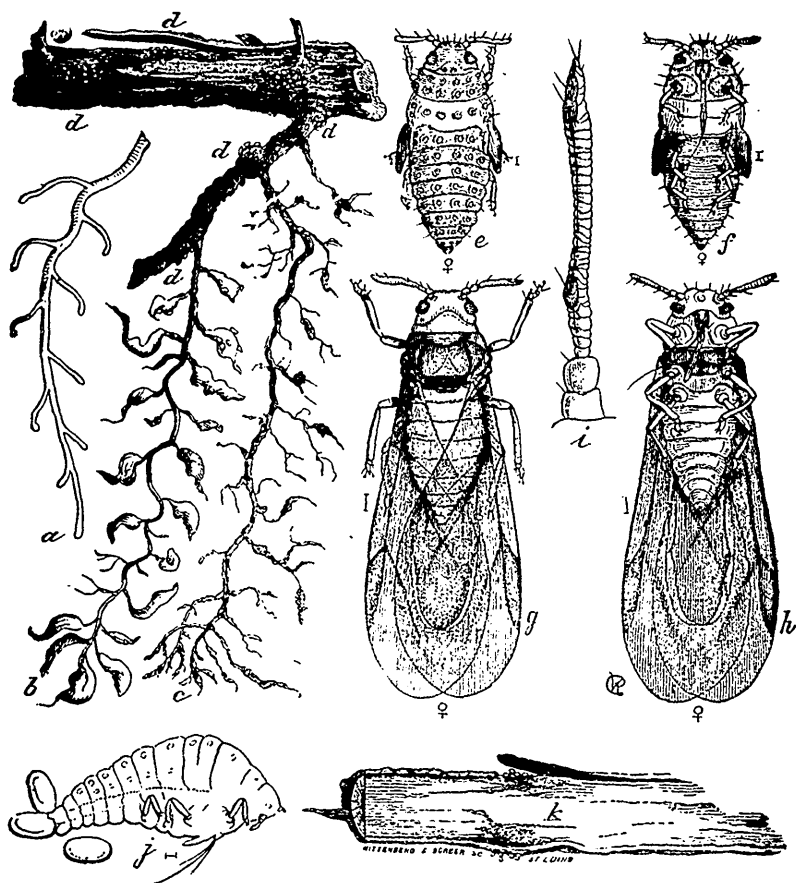


Fig. 17.

but before this takes place, the lice having little or no healthy tissue to work on, leave the dying vine and seek for food elsewhere, either wandering underground among the interlacing roots of adjacent vines, or crawling over the surface of the ground in search of more congenial quarters.