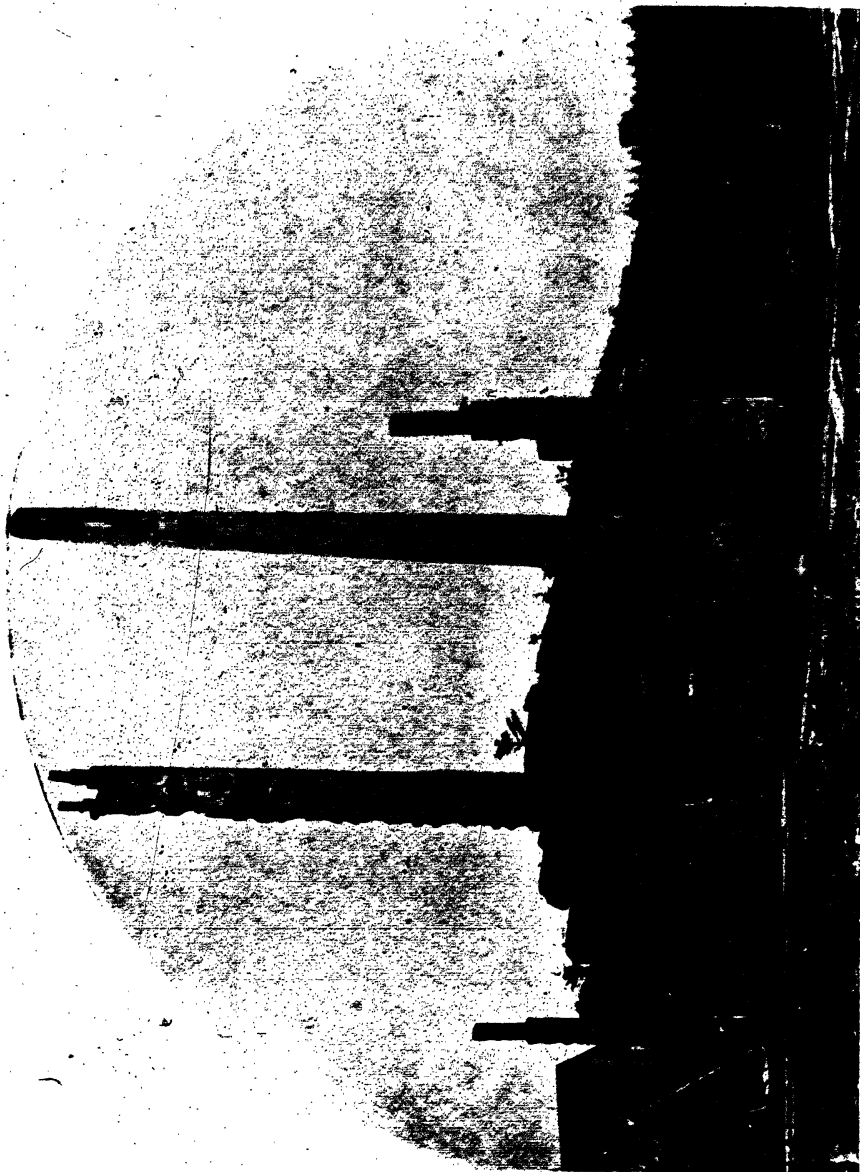


6 CRUISE AMONG HAIDA AND TLINGIT VILLAGES.

With one more tack we have rounded the point and are headed due south, and a favorable tide bears us rapidly down the inlet; a



ANCIENT HOUSE OF CHIEF WEHA. MASSET.

minute more and we sight Masset—a strange, quaint little sleepy village, with its tall totem poles and row of cottages.

Masset is one of the two villages which to-day make up all that is