

to Millions.

ON AMERICAN COUN-
THE FIGHT FOR \$750,
STATE, DECLARES WE
HASTON—DESCENDANT
WILLIAM OF ORANGE.

(Toronto Evening Star.)
of interest in the fam-
Jans Bogardus Brouwer
state has shifted from New
York to Toronto.

Webster Easton, a direct
descendant, through his mother,
Webster of Holland, visited The Star
with a portfolio of documenta-
tion which seems to give to
Webster the claim prior
to the numerous Brouwer
claims in New York, Detroit and Los
Angeles.

Hereditary comprises 119
of valuable real estate on low-
rental of which Little Trinity
is now the executor. As well
as Broad street are a part of
the estate. It is not surprising that
New York portion of the Webster
estate is conservatively valued at
\$70,000,000.

Holland portion, the proceeds
of interest of investments
made years ago by Prince Wol-
ferth in Dutch Borneo and the
lands, has been computed to
be \$70,000,000.

Descended from Rectors.

have their claim on descent
lands Jans and her two hus-
Bogardus and Brouwer, both
of Little Trinity in the early
century. I have seen her will
in New York.

left only her personal be-
her clothes, trinkets, bed-
furniture and her cows.
had no power to will the for-
estate. It was not hers.

passed to the Websters. The
claim which is based on
Jans will is not worth a row
of beans.

It has been supposed that
descendants of Annika Jans
the best claim to this amazing
estate in Chancery. To disprove
the Easton gave The Star a brief
of the Holland-American
Canadian line of Websters.

Saw Old Chart.

showed me in Trinity
said he "a chart six feet
went back nearly 300 years.
been able to supplement that
with over 800 people,
of whom have old family re-
cords on family tree is writ-
ten the bible of Samuel Webster,
of William of Orange by his
marriage Queen Mary, the
of James II. That annu-
the last my family from be-
the direct line for the throne
of England.

Webster received from his
father a grant, later confirmed
Anne in 1705, of the 119
of New York. It was especially
at the time that Trinity
should have a frontage of 70
feet of Lower Broadway
pasture grazed by Annika
Jans, is now claimed by the
Eastons.

Was Good Speculation.

Wolferth Webster, founded
his fortune as the result of
speculations in Dutch East
Indies companies. William of
Orange, the eighth son of
Charles II, still further by
his William Webster, his son
marginal marriage. William
of New York with Governor
Phillips, and his daughter was
Annika Jans, who mar-
ried Bogardus and, on his death,
the estate was a trust fund," said
Easton, "which was not to paid
until the seventh generation.
Why Holland is holding the
claim today. They are waiting for
the seventh genera-
tion to die.

Dutch are Canny.

Dutch are a cautious people.
are not going to let \$70,000,000
of their hands till the courts
decide. Mr. Easton showed a
copy of the Dutch contract which
was made at the De-
partment of Finance. There is no
mention of Jans, wife of
Webster, nor of her daughter
Annika.

Mr. Easton was just a
speculation. "We are going
to make formal application to the
government to produce the
will. We shall not obtain no satisfaction we
get the British government to
produce the will."

was the same secrecy and
in New York. Trinity
will fix a period for an ac-
count for their \$400,000,000 trans-
action. Wall Street ignores threats
of litigation. There is an attempt to
make the Webster estate have best
of both worlds and the theory that pos-
sible in this point of the law.
New York lawyers have been

\$4.00
White and Cream
Lace Curtains
now
\$2.88 Pair.



Wash Goods Listed for Clearance

DRESS LINENS—To clear several
pieces of plain shade Dress Linens,
Pink, Pale Blue, Mauve, Sand and
White: 36 inches wide. 29c.

CREPE CLOTHS—32 inch Crepe
Cloths, so popular to-day: shades
of Peach, Mauve, Pink and Pale
Blue. To clear Friday, Saturday
and Monday. 32c.

FIGURED CREPE—Nice for Dress-
es, Kimonos, Dressing Gowns,
Jumpsuits, etc. Quite a medley of
shades. Reg. 37c. yard. 32c.
Friday, Saturday & Monday.

CHEEN CLOTH—34 inch White
and very fine. To clear Friday,
Saturday and Monday. 14c.

COTTON BLANKETS—Heavier than
usual with a full fleece napping;
size 68 x 90, nice for the cooler
nights. Special the pair \$3.80
Cape. \$1.80 value. Out.

SHEETINGS—72 inch unbleached
twilled Sheetings, from renowned
English makers. Friday, Saturday
and Monday. 75c.

Ho! Ho! Here are the New Velours

Another lot of English
Velour Hats for early fall
wear. Oyster, Beige, Me-
lange, Dark Grey and Brown.
Regular value for \$7.00.
Friday, Saturday & Monday. \$6.30

MEN'S CAPS—Silk Lined Caps, in pretty
fawns and lighter shades, plated band,
all the style. Reg. \$5.50. Fri-
day, Saturday and Monday. \$2.30

NORRY CAPS—Showing one piece
crowns, in pretty mixed tweeds, med-
ium peak. It's the season for such
Caps. \$1.80 value. Out. \$1.59

SEMI-SOFT COLLARS—These are popular, comfortable,
will not soil as easily as the ordinary soft collar.
peak front. Reg. 45c. Special. 37c.

HANDKERCHIEFS—Coloured, border, kerchiefs,
full size mercerized finish. Special. 22c.

UMBRELLAS—With a generous spread, rigid frame and
fast black and covering steel tube, curved
handle. Reg. \$3.50. Friday, Saturday & Monday. \$2.85

BOYS' JERSEYS—All new arrivals and they bring good value,
scent open front, Peter Pan collar, shades of Fawn, Grey,
Cream, rose, Navy, Saxe and White. Special \$1.39

KNOT TIES—Neatly tied knots showing the sewing and
finish, stud fastened, always in place. Special. 45c.

KNITTED NECKWEAR—Plain and fancy, medium width,
knitted Neckwear, wears wonderfully well, quite
a variety here. Friday, Saturday and Monday. 39c.

BRACES—Durable Braces, with white cord fastenings and
the stoutest of elastic. Special Friday, Saturday
and Monday. 45c.

NECKWEAR—42 dozen of them in a limitless supply of col-
our blendings, and not one worth less than 40c. 32c.

SOFT COLLARS—English Soft Collars, new shape, round
fronted collar, shades of Cream and White,
they're comfortable. Special. 36c.

Service-Giving Cushions

Pump Cushions, covered in pretty chintz pat-
terns, circular shape, quite a range of them at \$1.48

HEARTH RUGS

Many of them, multi-colored and very durable; size 27 x
54, we bought heavily to secure the lowest price—the best
value you have seen for years in useful Hearth
Rugs. Special \$2.15

August Clean-Up

DO NOT MISS THE ADVANTAGES IT BRINGS

THE reputation of this Store—its tremendous city-
wide influence—its thousands of friends—its
immense turnover—all are directly traceable to one
thing—the ability to feature high grade merchandise
at lower prices than are elsewhere available.

FOLKS have come to expect the unexpected from
us. But even our oldest friends will be surprised
at the unprecedented goodness of this week's event
here, and its remarkable savings on needfuls now in
their height of usefulness. Many new items are fea-
tured, and values loom large in our August Clean-up
Sale.

FRIDAY, SATURDAY and MONDAY

CLEARING

STRAP SHOES—Ladies' Single Strap, Patent
Leather Shoes, perforated toe, rub-
ber toe. Special. \$3.98

WHITE SHOES—A clearing line of all White
Shoes, strap, pump and lace, spool and
cuban heels, nice for the season
values to \$5.00. Special. \$1.49



CLEARING

GIRL'S WHITE BOOTS—with spring heel,
broad toe, lace style, enamel sole and. Reg.
\$2.20, childrens size. Special. \$1.45

MISSER WHITE BOOTS—Laced style, low
heel, broad fitting shape, all white. Reg.
\$2.50. Friday, Saturday and Mon-
day. \$1.65

72 inch
WHITE
SHEETING
77c. Yard.



Listing Merely a Few of the Many SHOWROOM OPPORTUNITIES

CANISOLAS—White Muslin Canisoles, embroidery trimmed,
square and V neck, sleeveless; sizes 38 to 40. 65c.

GIRLS' UNION SUITS—Children's and Misses' finest ribbed
Jersey Union Suits, sleeveless, round neck, umbrella leg,
lace trimmed, fitting 6 to 12 years. Reg. 85c. 69c.

JUMPERS—These Ladies' Crepe-de-Chene Jumpers offer re-
markable value, round and V-necks, 3/4 sleeve, girde; shades
show Henna, Flesh, Navy, Biscuit, Brown and White; Waists
are included in range as well. Reg. \$5.50. \$3.89

INFANTS' DRESSES—Cream Pink and Sky
Cashmere Dresses for infants 6
months to 1 year, they're special at 49c

Sample Line
GIRLS' WOOL DRESSES
They're New

Straight line effect Dresses, in warm wool
make and other in wool Jersey, girde waist,
V and round neck, long and short sleeves,
pockets, etc. shades are Saxe, Navy, Saxe,
Fawn, Henna, Rose, Maize, Jade, rose and White,
to fit 6 to 18 years, all samples. Special prices
from \$2.98 to \$5.48



JERSEY BLOOMERS—Pink, fine Jersey robbed Bloomers,
elastic at waist and knee; sizes to 44 inch. 47c.

DRESSING JACKETS—Flowered Cotton Dressing Jackets,
Peter Pan collar, vic-rac trimming, 3/4 sleeve and girde;
assorted sizes. Reg. \$1.20. Friday, Saturday and
Monday. 79c.

SLIP-ON SWEATERS—New—handy for the season—these
Show-Ake Wool Slip-on Sweaters, V neck, long sleeve and
girde; shades include Jade, Navy and Peacock. Reg.
\$5.00. Friday, Saturday and Monday. \$7.48

SILK GARTERS—Shirred Silk Garter Elastics
in all the newest shades, three quarters of a
yard in each piece. Friday, Saturday
and Monday. The piece. 32c.

FANCY BUCKLES—In strong bone make, suit-
able for coat or dress, shades, Jade, Tortoise,
Brown, red, Cardinal, Black and White. Reg.
55c. Friday, Saturday and Mon-
day. 48c.

LINGERIE TARE—Silk Lingerie Tare, put up
4 yards in the piece, in Sky, Lavender, Pink,
Primrose and White. Reg. 20c. piece. 17c.

UNDERSKIRTS—White Lawn Underskirts,
embroidery trimmed, sizes 38 to 40. Reg.
\$1.50. Friday, Saturday and Monday. 98c.



INSTANCING

Rare Values in YARD GOODS

PUNJAB MUSLINS—Extra fine White
Muslins, 42 inches wide, very suit-
able for christening robes or such
like, beautifully fine, value for 45c.
yard. Friday, Saturday. 54c.
and Monday.

TABLE LINENS—250 yards of 38
inch White Damasks, in quite a
range of patterns. For Friday,
Saturday and Monday only. 75c.
the yard.

LONG CLOTHS—Superior
English Long Cloths, very suitable
for underthings, Camisoles and
children's wear. Special 33c.
Friday, Saturday and Monday.

CHECK SCURRI—Pure White Cur-
tain Scurri, 36 inch wide, neat,
simple and effective looking. Reg.
45c. yard. Friday, Satur-
day and Monday. 35c.

NEW ARRIVALS

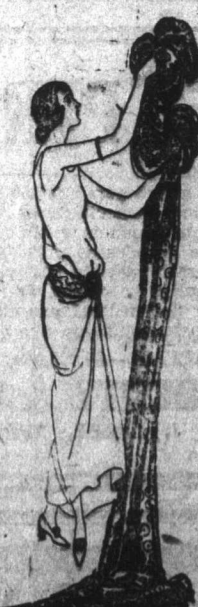
NAVY SERGE.
Double width, fast Navy Blue Dress Serges, ideal weight
for girl's school dresses. Reg. 80c. yard. Friday, Saturday
and Monday. 79c.

SILK MUSLINS.
Several pieces of 38 inch White Silk Musline go on Sale.
Reg. 45c. yard. Friday, Saturday and Monday. 39c.

FANCY LININGS.
A splendid range of new fancy Linings just to hand, short
lengths, 2 to 4 yards, they bring new values at
53c.

NEW CURTAININGS.
The new Curtain goods, 38 inch, plain shades with a
glitter like silk, remarkably uncommon looking and re-
markably low in price, shades of electric, Vex Rose,
Peach, Tan, Navy, Saxe, Prune. Friday, Saturday
and Monday. 59c.

SILK HANGINGS.
38 inch Silk Curtains, with a pronounced lustrous
sheen, fancy patterns on pretty grounds. Spe-
cial. \$1.75



Conspicuously Good GLOVE VALUES

KID GLOVES—Ladies' finest quality
Kid Gloves in shades of Tan, Be-
ver, Slate and Grey; 2 dome wrist.
Friday, Saturday and Monday. \$1.39

KID GLOVES—Real quality Kid
Gloves in shades of Tan and Grey,
as well as Black and White; value
for \$2.50 pair. Friday, Saturday
and Monday. \$2.20

KID GLOVES—Ladies' pretty Tan
shade Kid Gloves, in a real fine
quality; complete size range. Reg.
\$1.50. Friday, Saturday and Mon-
day. \$1.59

For the Housewife

ROPE MATS—Good wearing Rope
Door Mats, plain, coconut, dished;
size 14 x 24, for front door use.
Reg. \$2.20. Friday, Saturday and
Monday. \$1.85

WHITE QUILTS—28 only of large
size pure White Honeycomb Quilts,
72 x 90 inches, fringed. Were
\$4.70. Friday, Saturday. \$3.95

WINDOW BLINDS—36 x 72 inch size,
plain Cream Opaque Window Blinds,
complete with fittings. 79c.

BLIND LACE—New patterns in 4 inch
Cream Blind Lace to improve your
window appearance. Worth 50c.
yard. Friday, Saturday and Mon-
day. 25c.

TOWELS—A special lot chosen for
this week's selling event, 16 x 34
inch size; coloured Turkish
quality. Special each. 32c.

WHITE TOWELS—Full size White
Turkish Towels, with pretty blue
border, usually sold at a dollar.
Friday, Saturday and Mon-
day, each. 89c.

LAUNDRY BAGS—Suitable for ind-
ividual use, or small family, 21 x
19 inch size, embroidered front.
Reg. \$1.00. Friday, Saturday
and Monday. 87c.

BABIES' PILLOW CASES—Suitable
for perambulator or motor car.
They're white and hem-
stitch. Special. 59c.

HOSIERY

For the Whole Family
can be procured eco-
nomically all times at
this store—for instance:



GIRL'S AND BOYS' HOSE—Good wearing Hosiery, fast
black, 42 dozen go on sale, fitting 5 to 14 years.
Special. 24c.

KNICKER HOSE—Fancy topped Hosiery, in assorted
heather mixtures, all the boys wear them now. See
line at. 29c.

EXTRA LARGE HOSE—For those needing ample
size in Hosiery, we have a special lot in a good
black, wide tops. Reg. 80c. Special. 39c.

COTTON HOSE—Ladies' Cotton Hosiery, plain
cordovan, Black and white, seamless. Special
19c.

working on this case for years," said
Mr. Easton, "but they have always
met with a put-off like my letter from
the Dutch Consul. There is no record
in New York of a decision in New
York in favor of the heirs, but there
is no record of a decision against
them. The thing has hung fire for
lack of documents.

"I have now got the documents,"
he added, tapping his portfolio.
"People in the States have been on
the wrong tack. Many of the Ameri-
can claimants trace back to Annika
Jans' third marriage. That is too re-
mote a claim. The Websters are the
only people who can prove this
thing."

There is an estate. That is proved
by the trustees' declaration that they
will give an accounting only to the
bona fide heirs. The difficulty so far
has been to distinguish the genuine
from the spurious claimant. Mr.
Easton's importance in this genealo-
gical mystery is that his researches
have narrowed the field down to the
Websters.

Is No Visionary.

Mr. Easton is not a visionary.
There are few people who would
show so calm a pulse as he, in a mat-
ter involving nearly 700 millions of
dollars. He displays none of the
fever usually associated with a gold
rush. He works steadily at his
trade as an interior decorator, but
all his spare time, and energy is de-
voted to the unravelling of this 300-
year-old mystery.

(We have received a communica-
tion which would make it appear that
some of the descendants are or were
at some time resident in Nfld.—Ed.)
"Billy," said the teacher, "what
does c-a-t spell?"

"Don't know, sir," said Billy.
"What does your mother keep to
catch mice?"

"Trap, sir."
"No, no, what animal is very
fond of milk?"

"The baby, sir."
"You stupid, what was it that
scratched your sister's face?"

"My nails, sir."
The teacher by now was somewhat
out of patience and gave one last and
final try, exclaiming, "Do you see
that animal on the fence? Then tell
me what does c-a-t spell?"



FUSSY WITH YOUR TRY-ON?

We care not a jot, because
we are fussy too. We won't
let a suit go out of our shop
that is not just so in every
seam and line, every pocket
and button. We realize that
our reputation as tailors de-
pends upon your personal
satisfaction.

J. J. STRANG,

LADIES' & GENTS' TAILOR,
Corner Water & Prescott Sts.
S.P. 1, 402, 412

Published Annually.

THE LONDON DIRECTORY

With Provincial & Foreign Sections
and Trade Headings in Five
Languages

enables traders to communicate direct
with
MANUFACTURERS & DEALERS
in London and in the Provincial Towns
and Industrial Centres of the United
Kingdom and Ireland, the Continent
of Europe, America, etc. The book con-
tains over 350,000 names, addresses
and other details classified under more
than 2,000 trade headings, including

EXPORT MERCHANTS
with detailed particulars of the Goods
shipped and the overseas com-
panies supplied;

STEAMSHIP LINES
arranged under the Ports to which
they sail, and indicating the approxi-
mate dates;

One-inch BUSINESS CARDS of Firms
desiring to extend their connections,
or Trade Cards of

DEALERS SEEKING AGENCIES
can be printed at a cost of 5 dollars
for each trade heading under which
they are inserted. Larger advertise-
ments from 10 to 30 dollars.

The directory is invaluable to every-
one interested in overseas com-
merce, and a copy will be sent by parcel post
for 10 shillings, net cash with order.
THE LONDON DIRECTORY CO., LTD.,
25 Abchurch Lane, London, E.C. 4,
England.

Business Established in 1814.