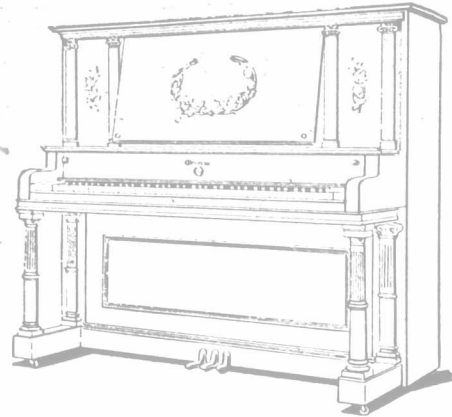


## Courlay, Winter & Leeming

"CANADA'S GREATEST PIANO AND ORGAN HOUSE."

# GOURLAY PIANOS

Mark a notable advance in the science of piano building.



**T**HERE ARE PIANOS which have for years been regarded as first-class, and to-day are as fine as they ever were, but which would appear to disadvantage if compared with the "Gourelay," because of its greater achievements.

The "Gourelay" is the creation of later and more advanced science—it is the ultimate result of the spirit which says—not "How many Pianos can I make and market in a year?"—but "How fine a Piano can I produce?"

In short, while it may not represent "the most perfect that may yet be," for perfection is always relative, still we know, and musical authorities agree, that the "Gourelay" represents "perfection in Piano-building" many degrees beyond that heretofore attained.

The illustration used above is in outline a facsimile of the "Gourelay" recently supplied to Rideau Hall for the personal use of Lady Ruby Elliot on the order of Her Excellency the Countess of Minto.

Write for particulars and prices.

## Courlay, Winter & Leeming

om

188 YONGE STREET, TORONTO.

### A VALUABLE BOOK.

A valuable little book on stock-raising and feeding has just been published by The Beaver Mfg. Co., of Galt, Ont. This book will be sent, free of charge, to all who send in their name and address and mention this paper. There are so many offers of something for nothing that The Beaver Mfg. Co. hesitated about making this offer of a free book. They have, as an honorable business firm, always made sure of giving full value for money received, but they have never given anything away. In this case, they offer something of real value to all readers of this paper. It is a book full of valuable information. It is clean reading and of real value. It contains the opinions of many of the leading Canadian breeders and exhibitors and some good illustrations of prizewinning stock. The matter has been carefully prepared, and the publishers have excluded all that they do not believe to be perfectly straight and true.

Send your name and address at once (a post card will do) and mention this paper, and you will receive this book by return mail. Address, The Beaver Mfg. Co., Galt, Canada.

### 1903-XMAS-1903

Xmas papers—Graphic, London News, Pears, Black and White, Globe, etc., etc., 50 CENTS EACH.

### Diaries and Daily Journals, '04

Orders by Mail Promptly Filled.

### LINTON BROS., CALGARY.

### DAINTY MINIATURE PHOTO BROOCH.

Genuine Hand-painted Enameled Photo, fitted in a Rolled Gold Brooch, \$1. Copied from any photo sent us. Photo returned uninjured, with brooch guaranteed 5 years. Catalogue free.

AGENTS WANTED. PHOTO JEWELLERY MFG. CO., Toronto.



### RUPTURE.

Write for particulars as to how to cure it without a risky operation. Invaluable advice FREE

C. H. Dorenwend, R. S., Toronto, Ont. State your case when writing. 393 Yonge St. om

## DON'T FORGET

The Manitoba Farmers' Mutual Hail Ins. Co.

### \$590,000 INSURANCE

in force. Rate, 3 per cent., or 15c. per acre, 1903, being lower than any of our competitors. All loss claims paid.

W. C. GRAHAM

Manager.

Box 513 WINNIPEG

### IMPERIAL HOTEL

BLACKFALDS, ALTA.

Good sample rooms and accommodation for commercial travellers and land-seekers; and all newly furnished.

Choice Wines, Liquors and Cigars.

WM. SPURRELL, PROPRIETOR.

### ALBERTA LAND AGENCY

OKOTOKS, ALBERTA.

For bargains in South Alberta lands, also loans and insurance, address

WM. E. McLEOD, OKOTOKS, ALB'RTA.



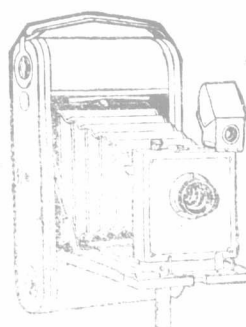
For "EMPIRE"

EASY-RUNNING

Cream Separators  
Anderson's Force  
Pumps  
Windmills  
or Real Estate

write  
A. J. SMYTH  
Box 3, Calgary, Alta.

E. J. C. SMITH,



Kodaks  
AND  
Supplies

Printing  
and Finishing.

276 Smith St., WINNIPEG.

## The Wawanesa Mutual Insurance Company.

HEAD OFFICE, WAWANESA, MANITOBA

Increase In Business during 1902, \$1,158,276	Alex. NalSmith, A. F. Kempton, C. D. Kerr, President. Sec-Manager. Treasurer. Assets over Liabilities, April 16, 1902, over \$78,800.00 Number of Farmers Members, over 7,100. Amount of Insurance in Force, Over \$6,600,000.00
---	--

Farmers Here are six reasons why it will pay you to insure your property in the Wawanesa Mutual Insurance Co.

OWNED and OPERATED BY FARMERS  
STRICTLY CO-OPERATIVE.

**FIRST**—Because it is owned and operated by the farmers, for their mutual benefit and not to enrich stockholders of a company formed to accumulate wealth at the expense of the insured.

**SECOND**—The cost of insurance is not only very low, but you are not required to pay your premiums in advance unless you prefer doing so, and no interest is charged where premium notes are taken. The agent's fee is all that is required to be paid in cash.

**THIRD**—The company is thoroughly reliable, and its policies are better adapted to Farm Insurance than any others issued. The use of steam threshers permitted free of charge.

**FOURTH**—The cost of adjustment of loss claims is paid by the company, not by insured.

**FIFTH**—Insurance on live stock covers them against loss by fire anywhere on the farm, and by lightning anywhere in Manitoba and the Northwest Territories.

**SIXTH**—That this is the largest Agricultural Fire Insurance Company west of Lake Superior, and must therefore be giving the best satisfaction to the farmers.

For Further Information Write the Secretary-Manager.

Members are only liable for the unpaid portion of their premium notes. No liability where cash is paid.

AGENTS WANTED IN UNREPRESENTED DISTRICTS.

A Fire Co insuring all classes of farm property at the lowest possible cost to the assured. Doing business under a charter from the Manitoba Government and a license from the Government of the N.-W. T.

In answering any advertisement on this page, kindly mention the FARMER'S ADVOCATE.