

feet above the top of the foundations. The tower is erected on steel trestle work over a steel reservoir 50 feet in diameter by 20 feet high, the top of the foundation of the trestle being on the same level as the



WATER TOWER, EAST TORONTO, ONT.

bottom of the steel reservoir. The capacity of the water tower is 80,000 imperial gallons, which is used for fire protection purposes exclusively, while the reservoir has a capacity of 200,000 imperial gallons.

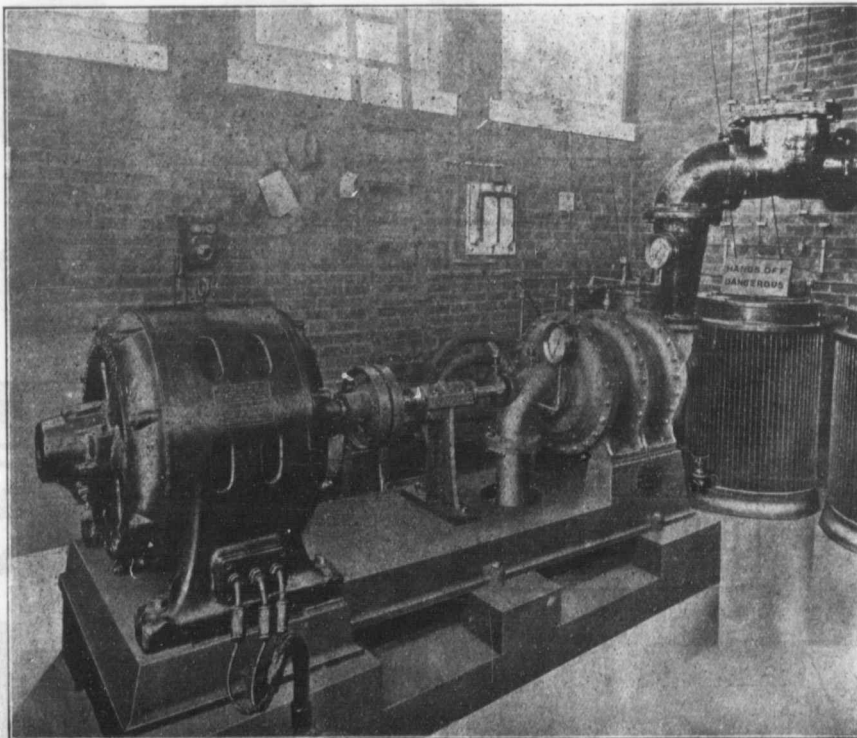
PLATINUM.

A company has been incorporated in London, known as the Platinum Corporation, with a capital stock of \$1,500,000, to develop concessions in the platinum-bearing districts of Russia, which for nearly a century has been the producer of nearly 90 per cent. of the platinum supply of the world. Platinum sold in 1892 for less than \$10 an ounce. In two years the price had risen to \$18.50, and in December of that year it was \$19.50. In April, 1905, it brought \$20.50. It continued to advance until in February, 1906, it sold for \$25. Last September it was quoted at \$34. The top-notch price of \$37 and \$38 was reached in March, this year, and then the price gradually declined to \$25 on July 1st. Three weeks ago there was an advance of \$1.

Platinum is almost indispensable in the manufacture of incandescent electric lamps and is also required for contacts in telephone switchboards.

CIVIC PLANT TO BE ABANDONED.

The Board of Control of the City of Winnipeg has decided to abandon the city's electric lighting plant, and to purchase the current required from the Street Railway Company. It is claimed that the purchase of the power from the Street Railway Company will mean a saving of close upon 50 per cent. on the cost of generating it. At the present time the city is generating current for the direct current lamps, used for street lighting. These lamps number about 200. The city also supplies the power necessary for the wells except for the fire booster at well No. 2, which is supplied by the Street Railway Company.



VIEW OF TRANSFORMERS, MOTORS AND TURBINE PUMP, EAST TORONTO PLANT.