

## Do You Know?

That the Magnet Cream Separator with its one piece skimmer has made centrifugal power separation of butter fat from milk a complete success. When centrifugal power was first applied to the separating of butter fat from milk it was in a hollow bowl. This method was only partially successful, and practical men agreed that the hollow bowl required something more to make the separation and operation satisfactory to the owner of the dairy. Many makers rushed to the other extreme by absurdly jumbling together a number of pieces which they called skimmers. These parts were difficult to fit together and almost impossible to keep clean. The inventor of the MAGNET has overcome all the objectionable features of the hollow bowl and also the complicated skimmers in the following way:-



(1) They make the steel bowl considerably longer than the old separator bowl and of less diameter.

(2) They applied the spur or square gear drive to the bowl because that gear is heavy and strong, thus giving the steadiness of motion required in order to skim clean and produce smooth cream.

(3) In constructing the skimmer, perfect separation of the butter fat from the milk was the first consideration.

(4) With the long bowl and square gear drive set in a solid frame, it was found possible to construct a skimmer in one piece, which would do all that was required by the dairyman, in so far as separation of butter fat from the milk, but it did more, it separated disease germs and foreign matter from both, thus giving an absolutely pure product.

(5) Ten years every day use has shown that the MAGNET does not wear out. That the separation is as complete to-day as when the machines were sold, and that the butter fat continues to be pure and the cream uniformly smooth.

(6) The skimmer being only one piece makes it easy to clean, requiring about one-quarter of the time that is usually taken to clean a cream separator.

(7) MAGNET Brakes encircle the bowl and stop it in eight seconds without injury to any part of the machine.

(8) The MAGNET has been awarded first prize wherever shown.

If we knew where you lived we would come to you with a MAGNET to enable you to test its working for yourself, which test would show you that every statement we have made is absolutely true, and also that the spur or square gear is the only gear that should be applied to a fast running machine like a cream separator.

**THE PETRIE MANUFACTURING COMPANY, LTD.**  
Hamilton, Ont. Winnipeg, Man. St. John, N.B.

WESTERN DISTRIBUTING POINTS  
Regina, Sask. Calgary, Alta. Vancouver, B.C. Victoria B.C.

You'll not find a more pliable roofing than Brantford Roofing because there isn't one made, and you'll experience considerable difficulty in trying to find one closely approaching it in elasticity.

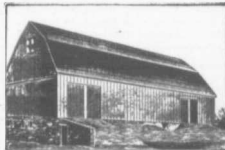
**This Elastic Toughness is a Permanent Feature of**

## Brantford Roofing

It retains it in all conditions of weather. Frost, which makes many a roofing brittle enough to crack when you bend it, does not affect the pliability of Brantford Roofing.

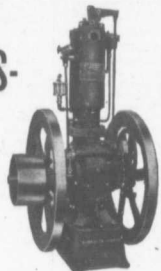
### Get Samples

of this pneumonically durable roofing (Asphalt and Rubber Finishes) from your dealer, or direct from us, and examine it. You'll find it coincides with your own views as to what a good roofing should be. Sold at as low a price as is possible for a really good roofing.



**Brantford Roofing Co.**  
LIMITED  
BRANTFORD, ONTARIO, CANADA

†  
**FAIRBANKS-  
MORSE  
ENGINES**  
†



- FOR -  
Gasoline  
Kerosene  
Distillate  
Alcohol  
—  
Vertical  
Horizontal  
Portable  
Wood Base

ALL SIZES

70,000 are in use and every one is giving satisfaction. Unequalled for durability, economy and reliability. Write on coupon below for catalogue and copies of testimonials.

**The Canadian Fairbanks Co.**

LIMITED

Montreal, Toronto, St. John, Winnipeg, Calgary, Vancouver

THE CANADIAN FAIRBANKS CO., Limited,  
444 St. James Street, Montreal, Que.

Please send catalogue and copies of testimonials.

Name.....

Address.....

## CHEAP EXCURSIONS TO THE WEST

Our Special Land Seekers' Excursions will leave Ontario and Eastern points on the following dates:

April 28th

May 12th and 26th

June 9th and 23rd

July 7th and 21st

August 4th and 18th

Sept. 1st, 15th and 29th

FARE AS FOLLOWS:

### \$40.50 RETURN

to Calgary from any point on the C. P. R. East of Sudbury, in Ontario, Quebec or New Brunswick. Excursionists from the Maritime Provinces will congregate at St. John.

Intending purchasers of Western lands are invited to join our excursions. Applications for passage must be received at least two days before date advertised—earlier if possible.

Write for list of our lands and our terms, which are the best heretofore offered in Canada by a reliable Company. An industrious capable man MUST SUCCEED if he buys land from this Company.

**THE LAND DEPARTMENT UNION TRUST CO'Y**  
LIMITED

174 BAY STREET - TORONTO, ONT.