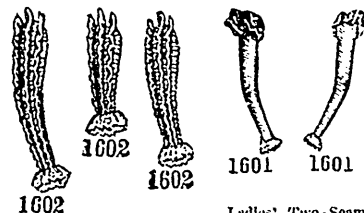


ON this page is illustrated an Assortment of Patterns for LADIES' AND MISSES'

...SLEEVES...

Which many will no doubt be pleased to inspect. The patterns can be had in the Sizes mentioned, from Ourselves or from Agents for the Sale of our Patterns. In ordering please specify the Numbers and Sizes desired.

THE BUTTERICK PUBLISHING CO.
(LIMITED).



1602
Ladies' Mousquetaire Dress Sleeve (To be Made in Full Length or in Three-Quarter or Elbow Length): 6 sizes. Arm measures, 10 to 14 ins. Any size, 5d. or 10 cents.

1601
Ladies' Two-Seam Dress Sleeve (To be Made with One or Two Frill Caps): 7 sizes. Arm measures, 10 to 16 inches. Any size, 5d. or 10 cents.



1545
Ladies' Tucked Dress Sleeve (To be Finished Plain or in Venetian Style or with a Fancy Cuff): 7 sizes. Arm measures, 10 to 16 inches. Any size, 5d. or 10 cents.

1551
Ladies' Two-Seam Dress Sleeve, having the Upper Part Draped in a Small Puff at the Top: 7 sizes. Arm measures, 10 to 16 inches. Any size, 5d. or 10 cents.



1549
Ladies' Two-Seam Dress Sleeve, with Triple Cap (To be Made With or Without the Mousquetaire Portion): 7 sizes. Arm measures, 10 to 16 ins. Any size, 5d. or 10 cents.

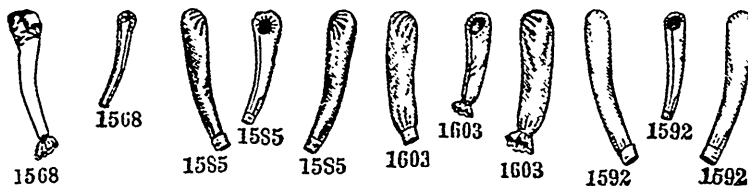


1564
Ladies' Two-Seam Dress Sleeve (Known as the Amy Robsart Sleeve): 7 sizes. Arm measures, 10 to 16 inches. Any size, 5d. or 10 cents.

1570
Ladies' Two-Seam Dress Sleeve (To have Five or Fewer Folds at the Top): 7 sizes. Arm measures, 10 to 16 inches. Any size, 5d. or 10 cents.



1569
Ladies' Two-Seam Dress Sleeve, having the Upper Part Draped in a Butterfly Puff at the Top: 7 sizes. Arm measures, 10 to 16 inches. Any size, 5d. or 10 cents.



1568
Ladies' Two-Seam Dress Sleeve, with a Cap (That may be Square or Round or in Tabs): 7 sizes. Arm measures, 10 to 16 inches. Any size, 5d. or 10 cents.

1585
Ladies' Leg-o'-Mutton Shirt Sleeve (To be Made with a Straight or Turn-Up Cuff or with a Wristband): 7 sizes. Arm measures, 10 to 16 inches. Any size, 5d. or 10 cents.

1603
Ladies' Small Blisnop Dress Sleeve (To be Finished with a Band or in a Frill): 7 sizes. Arm measures, 10 to 16 inches. Any size, 5d. or 10 cents.

1592
Ladies' Shirt Sleeve (To be Made with a Straight or Turn-Up Cuff or with a Wristband): 7 sizes. Arm measures, 10 to 16 inches. Any size, 5d. or 10 cents.



Weston Stamp Co.

31 KING STREET E.,
TORONTO

100 different foreign stamps,
post free, 13c.

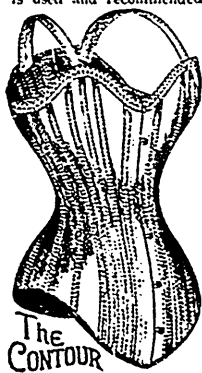
1,000 mixed foreign stamps,
post free, 40c.

Our New 1898 Price List of
500 different sets and tickets
sent, post free, on application.

THE GRACE OF A HEBE Depends upon the elegant sway and easy motion of the figure. We can thoroughly recommend the Contour, Victoria and Magnetic Corsets, which have become famous for their stylish gracefulness and unexcelled durability.

Standard Dress Pattern

is used and recommended by all the leading dressmakers; it can be relied upon not to stain, cut through at the ends, or become detached.



The
CROMPTON
CORSET
COMPANY,
Limited,
Toronto.

MOTHERS!

DON'T FAIL TO PROCURE

MRS. WINSLOW'S

Soothing Syrup

For Your Children
While Cutting Teeth.

It Soothes the Child, Softens the Gums, Allays Pain, Cures Wind Colic, and is the Best Remedy for Diarrhea.

TWENTY-FIVE CENTS A BOTTLE.



The Only Desirable Substitute for
Whalebone Obtainable.

CONSUMPTION.

I will send FREE and prepaid to any sufferer a sample bottle of the Best and Surest Remedy in the whole World for the cure of all Lung and Blood Diseases. Write to-day and be made sound and strong. Address Franklin Hart, Station E. New York.



1544
Ladies' One-Seam Sleeve (To be Laid in Five Box-Plaits or Gathered at the Top) For Coats, Jackets, etc., etc.): 7 sizes. Arm measures, 10 to 16 inches. Any size, 5d. or 10 cents.

1557
Ladies' Two-Seam Sleeve Gathered at the Top (For Coats, Jackets, etc., etc.): 7 sizes. Arm measures, 10 to 16 inches. Any size, 5d. or 10 cents.



1599
Misses' and Girls' Dress Sleeve (To be Made with a Tucked or Plain Puff and with the Wrist Plain or in Venetian Style): 7 sizes. Ages, 4 to 16 years. Any size, 5d. or 10 cents.

1605
Misses' and Girls' Two-Seam Dress Sleeve (To be Made with One or Two Frill Caps): 6 sizes. Ages, 6 to 16 years. Any size, 5d. or 10 cents.



1604
Misses' and Girls' Small Blisnop Dress Sleeve (To be Finished with a Band or in a Frill): 8 sizes. Ages, 2 to 16 years. Any size, 5d. or 10 cents.

1559
Misses' and Girls' One-Seam Sleeve (To be Laid in Five Box-Plaits or Gathered at the Top) For Coats, Jackets, etc., etc.): 7 sizes. Ages, 4 to 16 years. Any size, 5d. or 10 cents.

Teaberry
FOR THE
Teeth
AT ALL
DRUGGISTS
PLEASANT
HARMLESS
25 CENTS
A BOX
ZOPES-CHAMICAL CO. TORONTO