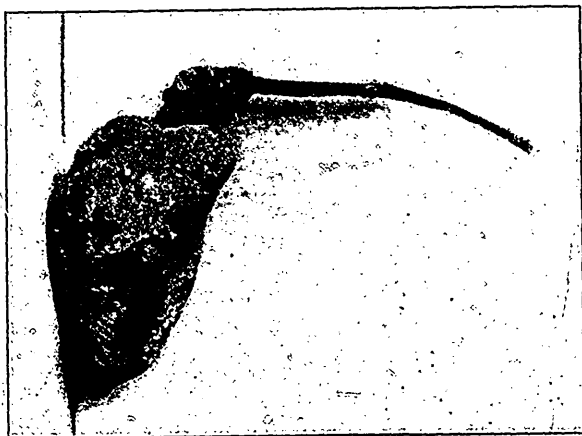


branch of a tree similar to that of the stone removed from the urethra. A catheter was introduced into the vesical wound and retained there for two weeks, and the patient left the hospital in about a week longer, cured.



On examination of the photograph it will be noticed that the calculus had formed upon the twig inside the bladder and that either a much smaller calculus had formed in front of the large one and the twig had broken between the two, and then lodged in the urethra, or the twig had broken in the bladder and been carried into the urethra where it rested long enough to form a second calculus. The photograph possibly explains the hesitation on the part of the patient to submit to an examination.

A PENETRATING WOUND OF THE AXILLARY REGION.

On August 25th, a patient, J. R., was admitted to the hospital with a history of having been injured two days previously while assisting at a "barn raising." He had been holding a large crow-bar against an upright with the smaller end of the bar resting against the front of his right shoulder. A large