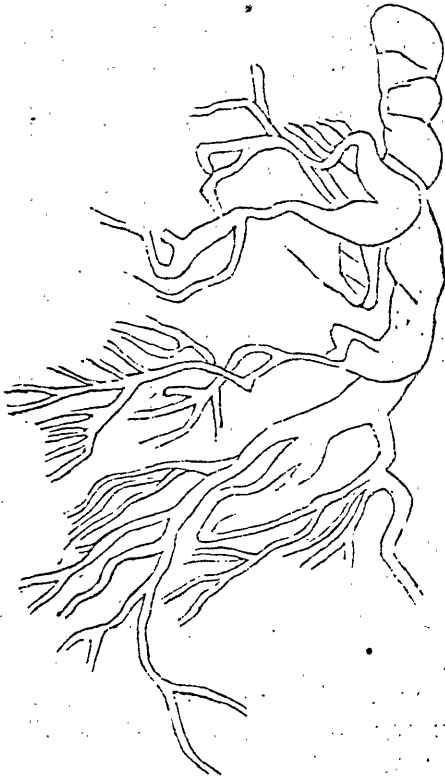


McGowan's assurances that they were only casts of the bronchial tubes and not the bronchial tubes themselves!

Some of the larger specimens had a diameter at the base of fully three-eighths of an inch, they were distinctly cylindrical, of a clear white, or perhaps pearl color, with here and there very minute and delicately coloured pink points.



One of the specimens I sent to Dr. Howard was, when fresh, a particularly fine one. In an ordinary Quinine bottle of water it floated with its top turned downwards, reaching from the cork to the bottom of the bottle, branching out on each side, and representing a perfect white gem of a tree. That one had, at first, twenty-eight terminal branches, and