

## MINING SHOVELS

our 'FENERTY' Brand

COOK'S PAN SHOVELS.  
COAL TRIMMERS SHOVELS.  
SCRAPER SHOVELS, ETC.

ARE USED BY

*The Largest Mines in Canada*

MANUFACTURED BY  
**The HALIFAX SHOVEL Co.**

HALIFAX, N. S.

ALL GOODS GUARANTEED.

**ORNAMENTAL  
IRON WORK**  
**WIRE CLOTH**  
**WIRE GOODS**

WE SPECIALIZE IN MINER'S  
SCREENS made of HARD STEEL  
WIRE or PERFORATED SHEET  
STEEL.  
INQUIRIES SOLICITED.

CANADA WIRE GOODS MFG. CO.  
HAMILTON.

**THE GARLOCK PACKING CO.**  
Hamilton, Ontario

—Manufacturers of—

**GARLOCK PACKINGS**

"Be sure you get the Genuine."

**Everything in PACKINGS,  
and ENGINEERS SUPPLIES.**

Used by Collieries in Lancashire, Stafford-  
shire & Yorkshire

'XTERRA'

COLLIERY LAMP OIL

For Massey, Muesel, Deflector or Cloud Lamp.

PURE WHITE FLAME.  
E. WOLASTON,

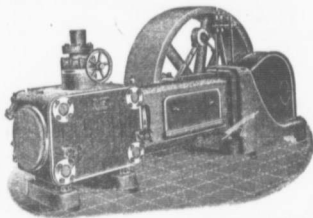
Darton St.

LOW PRICE.

MANGHESTE

Sole Representatives for Canada, AUSTEN BROS.  
Halifax, N. S.

## Robb Corliss Engines



Have the Armstrong-Corliss valve gear, which will operate at a higher speed than the ordinary releasing gear.

This valve gear does not depend on springs or dash pots for closing, and runs without noise.

The wearing parts of the valve gear are enclosed in a casing and run in oil so that friction is reduced to a minimum.

**ROBB ENGINEERING COMPANY, L't'd,**  
AMHERST, N. S.

**INTERCOLONIAL  
RAILWAY**

THROUGH SERVICE TO

**Montreal**

VIA THE ONLY

**ALL CANADIAN ROUTE.**

NO. 20 CONNECTION FOR  
CANADA'S FAMOUS TRAIN THE

**MARITIME EXPRESS**

Leaves Stellarton 15.15  
(Daily except Sunday)

Arrives Montreal 18.30  
(Daily except Monday)

**Parlor Car Sydney to Truro.**

THROUGH SLEEPING CARS AND DINING CAR  
TRURO TO MONTREAL.

**The Most Comfortable**

**Train in America.**