

# WIRE ROPE

We carry a Large Stock.

W. H. C. MUSSEN & CO.

MONTREAL

Obtain our Prices.

# MINE RAILS

## THOS. FIRTH & SONS, Ltd., Sheffield, Tool Steel and Rock Drill Steel

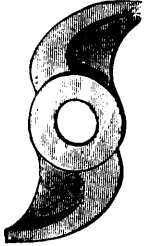
ALWAYS CARRIED IN STOCK.



SHOES AND DIES.



CAMS, TAPPETS, BOSSES, ROLL SHELLS, CRUSHER PLATES.

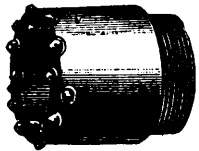


### H. W. DeCOURTENAY & CO.

86 and 88 MCGILL STREET

Agents for Canada.

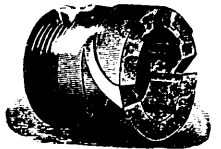
MONTREAL.



## BERNARD BANDLER

IMPORTER OF

# CARBONS AND BORTS



For Diamond Drills and all Mechanical Purposes

GOODS SENT SUBJECT TO APPROVAL

65 Nassau Street, NEW YORK, N.Y.

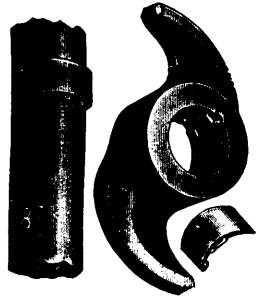
## ADAMANTINE SHOES & DIES ALSO CHROME CAST STEEL.

THE CANDA PATENT SELF-LOCKING CAM

TAPPETS, BOSSES, ROLL SHELL and CRUSHER PLATES.

Also Rolled Parts for Huntington and other Mills.

These castings are extensively used in all the Mining States and Territories throughout the World. Guaranteed to prove better and cheaper than any others. Orders solicited subject to above conditions. When ordering send sketch with exact dimensions. Send for Illustrated Catalogue to



## CHROME STEEL WORKS, BROOKLYN, N.Y., U.S.A.

KENT AVENUE, KEAP AND HOOPER STREETS.

Canda Cam.

F. E. CANDA, President.

C. J. CANDA, Vice-President.

F. MORA CANDA, Secretary.

T. I. JONES, Treasurer.

# HADFIELD'S PATENT



# MANGANESE STEEL

Sole Representative in Canada FRANCIS T. PEACOCK, M. E. 44 Canada Life Bldg., MONTREAL