

Spring Furniture Opening Suggests Home Ideas

BEDELLA WILL ALWAYS FAVOR A CEDAR CHEST

Nothing Can Quite Take Place of Time-Honored Box.

HAS ITS VIRTUES

Utility, Beauty and Economy Commend Cedar Chest In Spring.

"In the spring a young man's fancy lightly turns to thoughts of love." All appearances to the contrary, the back of winter is bound to

Bedroom Should Have Personality

Some Ideas For Furniture and Arrangements To Be Considered In Room of Rest.

Does your bedroom reflect you? It can, and should, for a bedroom is your own private domain. It is the one room in the house which you have the sole right to arrange as you please. The rest of the house is for the family and guests; this one room is your sacred property.

And remember that a bedroom is designed for rest. Keep this in mind when choosing wallpaper and floor covering. Avoid "busy" patterns. Plain, neutral tints are best and make the ideal setting for pictures and furniture. And do not be guided by personal preference in your choice of color. You the Girl Guides' Camp.

LIONS' CONCERT AUGMENTS FUND FOR GIRLS' CAMP

Enthusiastic Audience Greeted Benefit Performance In Collegiate Auditorium.

PLAYLET DELIGHTS

"The Trysting Place" Proves Mirthful Farce With Real Plot.

The Lions Club last night staged a splendid concert in the auditorium of the Central Collegiate in aid of the Girl Guides' Camp.

The first half of the program consisted of a number of selections from the club orchestra, vocal solos and elocutionary monologues.

Frederic Dowling sang several well-known songs and was encored repeatedly. The "Dungeon Deep," a song admirably suited to his rich bass voice, was his best number and was warmly applauded. Miss Minnie Dobbyn, elocutionist, was a general favorite in the rendering of her monologues, most of which followed a humorous vein, and were heartily enjoyed by those present. Wesley Roberts, tenor, has a charming voice, and the interpretation of his selections was splendid and greatly appreciated.

Creditable Program. Harry Carson is evidently a born entertainer, and his piano monologues gave additional color to a creditable program. The duet by Messrs. Roberts and Dowling came as a real treat and was an outstanding number.

The Lions' orchestra is something apart when amateur orchestras are under discussion, and their "jazz" is flawless. They received rounds of applause after each selection, and there was anything lacking in the program it was the brevity of their turns.

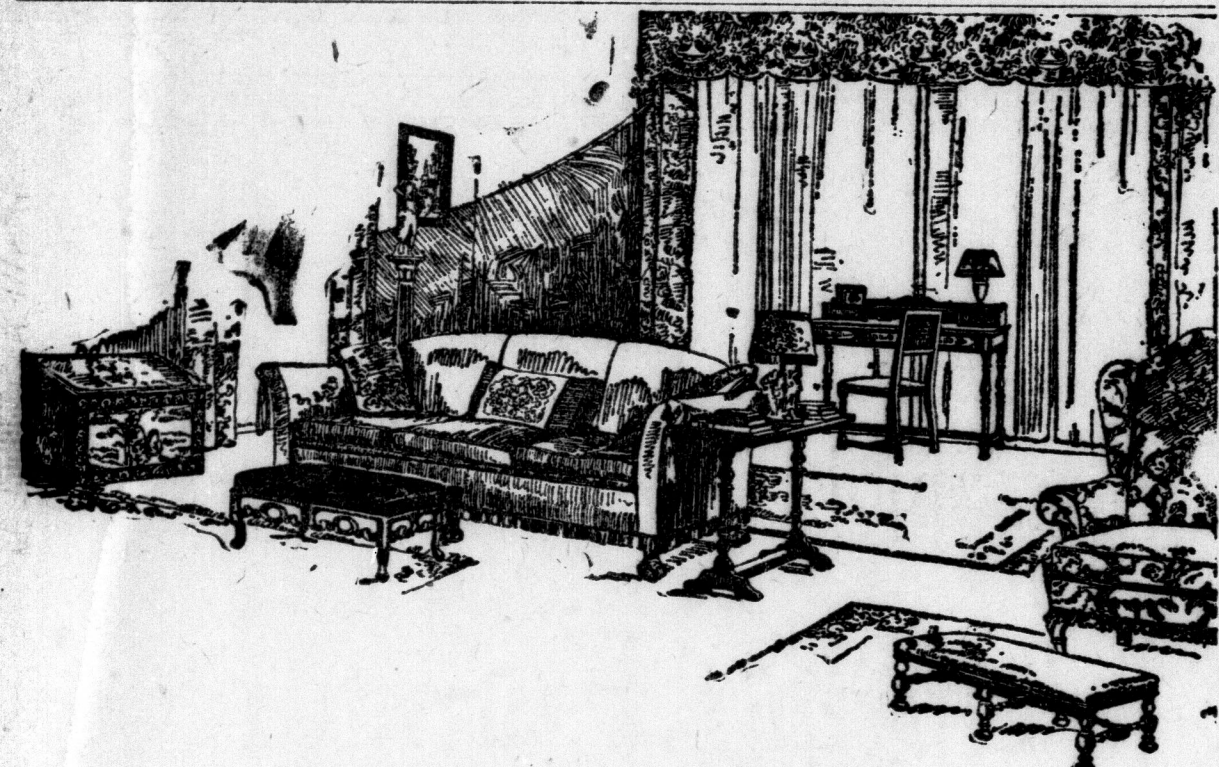
The playlet, "The Trysting Place," by Booth Tarkington, which formed the latter half of the program, was a scream. The setting was the lounge of a fashionable hotel, and the plot, a cumulative one, started with the attempt of the youngest male member of the family at falling hopelessly in love with a charming young widow. As their tale a tale is interrupted, the young hopeful concealed himself behind a settee, and the first lovers are replaced by the youth's sister and her swain.

Disturbed Lovers. The farce was a scream from end to end, and each line brought forth its chuckle and hearty laugh. Those who took part in the play were: Marion Drew, Alex. Morrison, Kitty White, Dr. J. F. Giffin, Mary Marshall, F. O. Graham and Rev. Denny Bright.

COURT RESERVES DECISION IN PLYMPTON FLOOD CASE

Special to The Advertiser. Sarnia, April 13.—Judge Albert E. Taylor today reserved decision in the suit of Joseph Hubbard, Plympton Township, against the County of Lambton, for damages for alleged flooding of his lands on the 18th-19th side road, Plympton.

Plaintiff claims 13 acres of crops were ruined and asks unstated damages.



WOULDN'T YOU LIKE TO SIT BY MY HEARTH FIRE?

Doesn't it look cosy, with the new order of Chesterfield drawn in front of the open grate, so welcome on the chilly spring day, after the furnace is allowed to go out, or even on a damp evening in summer. The

Chesterfield, you will note, has the removable spring cushions, so ideal for both economic and sanitary reasons. When the seat wears out it is quite simple to have one cushion replaced at a time, and the cost is a mere bagatelle compared with that of

"doing over" a whole big piece of furniture. By the way, the covering of the Chesterfield pictured is the new "mo-hair," velvety and durable, in plain taupe, combined with taupe and dark blue. The inviting chair to the right is a part of the set.

break, and there'll come a warm May night of whispering breezes, perfume-laden air, leafing-out trees, and a silver moon. And if May doesn't get him, chiming of wedding-bells will.

Bedella being willing, according to the ways of women from her great grandmother several times removed, Madame Eve down, she'll promptly begin to think in terms of clothes. She'll measure off the shining hours to the tune of dainty lingerie, to shiny linens for her pillow slips, runners, tea cloths, dollies, the dozens upon dozens of things she'll need to set up housekeeping.

So precious is everything bound to be which will find lodgment in that chest of dreams, that naturally the chest must be trustworthy and in keeping.

Nothing can ever quite take the place of the time-honored cedar chest which will guard with its life the contents against moth and rust. The first and most practical present for the bride-to-be from dotting relatives is the useful and decorative cedar chest.

If Bedella's preference is consulted, she'll wax enthusiastic over the shining chest of Tennessee red cedar that can be bought from \$19.50 up. She'll revel in the whiff of the old piney woods which is wafted over the lid as it is raised, the aroma so deadly distasteful to Mr. Moth and his clan. Is the chest to be dedicated largely or almost entirely to lingerie? The chances are she'll go right out and purchase fascinating little tightly-stuffed bags of lavender to tuck away with the very first layer. Lavender's back, with many other good old customs such as paisley and bandanas.

But the cedar chest isn't by any means the "bride's own," even if she does feel for a glorious hour that she possesses the world as her exclusive right.

An Ideal Cedar Chest. There's the 1923 debutante, the sweet girl graduate who is coming home from school to stay. Her room is to be done over. Perhaps for the first time in her life she is to have a room exclusively her own, and, even now, at housecleaning time, mothers' brows are knit over the problem of making the most of the somewhat small space available.

A certain cedar chest has been built for the very purpose of meeting such an emergency. It is a little deeper and wider than the usual run, and side-placed to it the dignity of a seat. With a few cushions of ecru-tonna, chintz, terry cloth or velvet, it fits into the scheme of decoration, provides seating accommodation, along with the dressing-table bench, and affords ample space for storing garments, provided a chest of drawers is out of the question.

Such a cedar chest-box is an invaluable first aid in fitting any family in an order-insuring manner into the cramped quarters of the modern apartment or duplex. It's a present help in time of trouble. And it can be trusted, unwarmed and all alone, to take scrupulous care of the cherished family furs, from mother's seal or beaver coat down to baby's bunny tippet and muff.

Utility, beauty and economy, these are the virtues which commend the cedar chest in the spring or at any other season of the year.

SELLS PEMBROKE PAPER TO WARTON PRESS MAN

Special to The Advertiser.

Pembroke, April 13.—A deal of considerable interest in weekly newspaper circles was completed today, when A. Logan of the Canadian Echo, Warnton, purchased the Pembroke Standard from Thos. W. Whaley.

Mr. Whaley, who has been one of the most popular and prominent of weekly publishers, is going to retire from active newspaper work.

Mr. Logan will continue to publish the Canadian Echo at Warnton, and Mr. L. H. Logan will take charge of the Pembroke Standard.

may be fond of baby blue, but if you paper a northeast room with blue it will make it seem even more cold and cheerless. This room needs a soft buff or a light tan. Gray is another popular tint which is often misplaced. Use gray only where there is plenty of light and sunshine, beware of yellows, or pinks. They will produce an effect that is positively glaring. Common sense, and not personal preference, must govern the selection of the color scheme. A paper with a simple design is not objectionable, but when the paper is decorative in itself, not many pictures can be used.

Beware the Conventional. Having wisely selected the background, the next important feature is the furniture. Keep away, if possible, from the conventional bedroom set. This is a good thing in hotels, perhaps, but a woman who wishes her room to indicate individuality would no more buy her bedroom complete than she would buy a whole library of books.

The library one enjoys owning is made up of separate volumes, chosen with care, and the most charming bedroom is one that contains separate but harmonizing pieces. Perhaps the antique style will be selected and the effect of this is always charming. But whatever you have, let it reflect your individual taste.

Keep Covers Immaculate.

The arrangement of the furniture is also important. There are spaces in most bedrooms that are obviously made for certain articles of furniture, and the room will look best balanced if these pieces are placed where they belong. A bed placed against a narrow wall space and a chiffonier set in the middle of a long wall is neither good taste nor good management. And, of course, the care of the room is the greatest reflection of all. Soiled or rumpled covers on the bureau and dressing table, and any carelessness as to order, are to be avoided unless you wish the room to tell the story of your poor housekeeping.

Japalac With Genuine JAP-A-LAC

It's lots of fun to japalac chairs, linoleum, tables, woodwork, floors, toys, etc., and it sure does save money. Jap-a-lac wears as well as it looks, stays smooth and bright for a long time. Drop in for a can—any size. We have a new stock.

GLEDDEN

FOR SALE BY
Cowan Hardware, Limited
125-127 Dundas Street. Phones 3461-3462.

Better Furnished Homes

Without doubt one of the best investments for a better-furnished home is a comfortable, restful bed, one which so thoroughly rests you at night that you enter on the new day's duties with renewed zest. Today the average citizen can have one at a reasonable and moderate price. Let us show you!

SOME LEADING VALUES IN

Beds, Springs and Mattresses

Simmons' Steel Bed, walnut finish, two-inch continuous posts and heavy fillers, with all-steel springs of superior quality, and all-white layer felt mattress; all fully guaranteed **\$34.50**

White Enamel Iron Bed, with brass caps, together with all-steel springs and felt mattress; full-size outfit **\$18.50**

Our line of Beds includes Iron and Steel Beds, in white enamel, ivory and wood finishes; also Brass Beds of attractive designs and finishes, and Wood Beds. See our Walnut-Veneer Wood Bed at **\$15.75**

It is a winner. Only a few of them left.

In Mattresses we can supply your special needs. We are agents for the famous Ostermoor and other high-grade mattresses; and we can furnish all medium-grade and other mattresses at popular prices.

WM. TRAFFORD FURNITURE CO.

COMPLETE HOME FURNISHERS.

129 DUNDAS STREET.

Established 1878.

11 MARKET SQUARE.

FURNITURE MAKING IS EARLIEST HANDIWORK

(Continued From Page 10.)

eighteenth century there was an interesting and delightful type of quite individual American furniture. There is nothing frail about Colonial furniture. Timber in those early days was plentiful, hence there was no need to economize. However, abundance of material was not the only reason for Colonial furniture being solid and well built. One can hardly

imagine one of the rugged old pioneers of those days coming home from a day's battling with the elements in field and forest, sitting down in a fragile chair to rest his weary body; and so today our Colonial furniture is substantial in build and frame, with very little embellishment in the way of carving, with broad surfaces of wood unadorned except for the natural figure of the grain.

In Conclusion. It seems fitting in concluding our sketch, that something be said as to the value of a well chosen collection of furniture of period styles—originals or faithful adaptations—as an investment.

In the first place there is the pleasure of choosing and later the

satisfaction and enjoyment of possession. The old saying, "A thing of beauty is a joy forever" is well exemplified in the acquisition of furniture that is marked by refinement of outline and conforms with well established standards of taste.

In the second place there is the assurance that pieces chosen wisely will be treasured not alone by the original owner, but will be handed down and treasured by succeeding generations. Furthermore, high prices are being paid today for the originals of less than a century ago. The adaptations of today will be similarly regarded at a later period, and with the increasing scarcity of fine furniture in woods, are certain to enhance in value if the design be correct. With

proper care, therefore, furniture of this class will, in the course of time, bring more than the original purchase price. Thus is the value established both from a sentimental and a commercial point of view.

SEVENTY-ONE ASSIGNMENTS
Ottawa, April 13.—Seventy-one notices of assignment under the Bankruptcy Act announced in the Canada Gazette of this week.

Look for the STAR SPECIAL in each Furniture Ad in today's paper.

Furniture Spring Opening Week

We cordially invite you to inspect our large stock of good-grade furniture REASONABLY PRICED.



TUESDAY—Mammoth Sale
ALL REED CHAIRS
Values up to \$24, reduced to **\$12.50 to \$18.50**

SPECIALS MONDAY.

Green Window Shades
36 inches wide, real value. **59c** Each

Feather Pillows
Simmons' make. Special value, a pair **\$1.55**

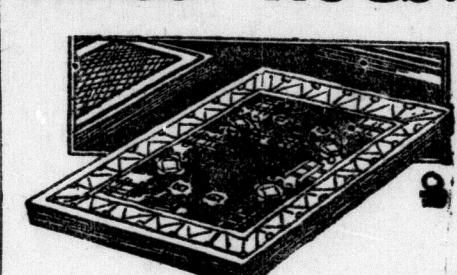
BABY CARRIAGES

Genuine reed, upholstered in corduroy, heavy artillery wheels, regular \$50.00. Special. **\$38.00**

Simmons' Wood-Finish Beds at Reduced Prices.

Better Furniture at Lower Prices.

RUGS! RUGS!



Tapestry, Axminster and Wilton, all room sizes, at reduced prices.

MATTRESSES



A Guaranteed Pure White Layer Felt Mattress, roll edge, handles for turning, regular \$12.50. Special value **\$9.50**

WYATT FURNITURE CO.

349-351 TALBOT STREET, BETWEEN KING AND YORK STREETS.

PHONE 7082.

Better Furnished Homes Suggest That YOU

USE GAS

AN ALL-GAS KITCHEN IS THE GREATEST CONVENIENCE OF MODERN TIMES

Porcelain Trimmed

Gas Ranges

From

\$28



Ruud Gas Water Heaters

\$24

An Extra Measure of Service

In the old days, the grocer made a practice of weighing out grocery supplies on a big pair of counter scales. When the pan had balanced, he would throw in "a little extra," making one end of the scales touch bottom. We are living up to this tradition. We are not satisfied to give merely an even measure of service, we believe in giving an "extra" measure of service. Our service men are ready at all times to help you maintain and regulate your gas appliance free of charge.

\$3.00 Down \$3.00 a Month

Connected Ready to Light

Repair Bills Are Unknown With Gas Appliances

City Gas Co. of London

Commercial Department: 213 Dundas Street, Phone 835