



## Portland Cement

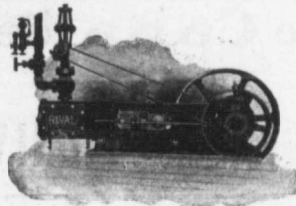
### MONARCH BRAND

Highest quality—guaranteed to fulfill the requirements of specifications for Portland Cement approved of by the Canadian and American Societies of Civil Engineers.

Prompt shipments from millor stock at Fort William and Port Arthur.

—The—

**Lakefield Portland Cement Co., Limited**  
LAKEFIELD, ONT.



## Rival Engines

Medium Price Medium Speed Medium Size

WRITE FOR CIRCULAR

**Laurie Engine and Machine Co., Limited**  
MONTREAL, CANADA

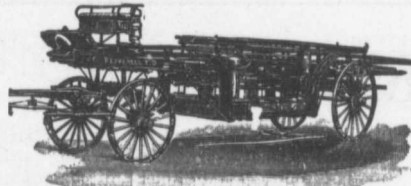


## "Lehigh" Portland Cement

Capacity 20,000 Barrels per Day

The "Lehigh Portland Cement Company, Limited," are now also building a plant at Belleville, Ont., of 750,000 barrels annual capacity. Until this plant is completed all orders can be shipped from the United States. For prices, etc., address—

**Thorn Cement Company**  
Buffalo, N. Y.  
SOLE AGENTS FOR CANADA



## Lightness, Strength and Economy

Seagreave Patent Trussed Ladders, Trussed Aerial, City Service and Village Hook and Ladder Trucks, Combination Hook and Ladder Trucks and Chemical Engines, Trussed Trucks, and Hand Pumps, Combination Hose Wagons and Chemical Engines, Hose Wagons, Combination Hook and Ladder Trucks and Hose Wagons, Chemical Engines, Fire Extinguishers, Hose Reels, Patrol Wagons, Ambulances, Specialty Wagons, Patent Sleigh Runners, and other Modern Fire Fighting Tools.

Prompt attention given to all enquiries. All goods built to order.

**W. E. SEACRAVE - WALKERVILLE, ONT.**

LONG DISTANCE PHONES 685 AD 684



## PILE DRIVING

On land and water by steam.  
Pile Drivers or Drop Hammers.

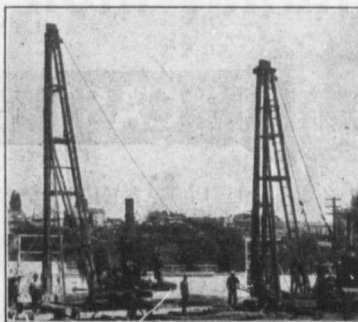
Dams, Wharves, Bridge Building, Trestle Work and General Contracting.

Submarine Diving and all kinds of Submarine Work.

We have always a stock of:—Diving Outfits, Portable Boilers, Hoisting and Pumping Machinery, etc.

**WM. HOOD & SON, 10 RICHMOND SQ., MONTREAL**

## PILE DRIVING and Foundation Work



By 5-ton Automatic Steam Pile Hammers, Water Jet or Drop Hammers, Dock Building, Submarine work and Dredging.

**Building Mover and Wrecker**  
GENERAL CONTRACTING

**John E. Russell**  
Toronto

Residence, 1010 Queen St. E.—Phone M. 4626  
Office and Yard 307 Logan Ave.—Phone M. 2007.