

just recovering from the shock of being torn from the seed-bed or box in which they were bought, growth is necessarily slow. This is when the cut worm gets in his fine work by gnawing the stem either through or partly so, causing the plant to wilt and die. A dusting of air-slacked lime mixed with equal parts of sulphur, is a good remedy. Dust it on and around the plant. This also prevents attacks from the cabbage maggot, which eats the roots. Half a pound of Pyrethrum powder, mixed with two pounds of common flour, and scattered on in the same manner, is also good. These two remedies are also excellent later on, when the cabbage has formed its head and the green caterpillar begins to get busy. A light dusting of either once a week will keep them in check.

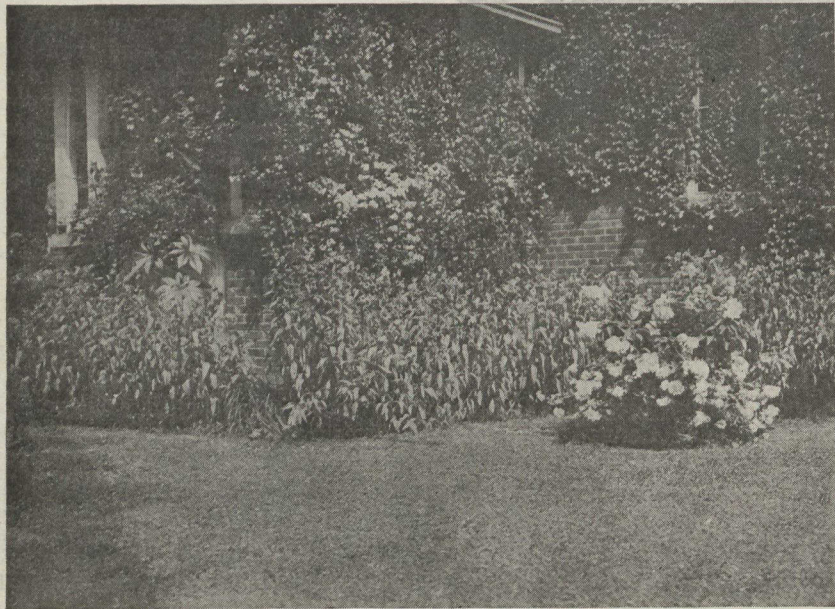
Keep the seedlings moist, but not sodden, until they are transferred to the garden. Then use the hoe as frequently as possible. When ground is not wet, give a good soaking once a

many. We may plant the white Tobacco or Nicotiana, Heliotrope, Stocks, and sturdy little Sweet Peas, and sow the night scented stock (Matthiola) this place of flower scents should be near the house. When the heat of the day is over a sweet fragrance will float in through the open windows making the home seem all the better for such surroundings. All the things named may be sown or planted out now.

A Hint to Strawberry Growers

By W. A. DIER, OTTAWA

IN an excellent article on Strawberries by Mr. Dier in the seventh annual report of the Horticultural Societies of Ontario occurs this note: "One of the enemies to which the strawberry is subject is the white grub. It is the larva of the May beetle. The grub when fully grown is about an inch and a half long, and three-eighths of an inch thick, nearly white, with a brown



PLANT YOURS NOW.

Summer Flowers Abloom in the Garden of E. J. Dignam, Bewsey Lodge, Avenue Road, Toronto.

week during dry weather, removing weeds and stirring the soil until the cabbages have spread themselves out so that you cannot get the hoe in between them.

Henderson's Summer Early is one of the best all round cabbages for early, mid-season and late. I had splendid success last year with Glory for mid-season and Danish Ball-head for late variety. Drumhead is a good Savoy. If you have space and desire to grow Cauliflower and Brussel's Sprouts, Snowball for the former and Sutton's Dwarf for the latter are best for gardens surrounded by unsightly board fences.

A Garden of Scents

IT is a pleasant idea having gardens of one flower but that idea can only be, of course, realized when there are many broad acres to cover, but a garden of scents is within the reach of

head. They are usually more numerous in old pastures and meadows than elsewhere, because their principal food is the roots of different kinds of grass. The old sods offer protection against birds which devour them. Therefore, it is not safe to plant in newly plowed sod, but it is better to occupy the ground with some crop which requires considerable hoeing and cultivation for at least two years before planting to strawberries. This gives the birds a chance to clear the ground of this pest. Birds themselves are exceedingly troublesome to the small grower during the fruiting season, and they seem to be perfectly partial to the finest specimens. On the first sign of ripening, I placed pieces of newspapers under the clusters to protect them from the bugs in the ground, and inverted strawberry boxes on top to protect them from the birds. In this way only could I save my best berries."

Building a New-World Palace

(Concluded from page 9.)

other the guest rooms, each of which is replete with a bathroom, and dressing room. Each suite will be distinct in furnishing and decoration.

The buildings are modern and comprehensive in appointment. The heating apparatus, instead of being actually in the house, is in the power house adjoining the stables, and the heat is carried down a long underground tunnel, five hundred feet long. The corridor is wide enough to admit a carriage. It is, of course, lighted by electricity. The walls shelter the different heating pipes. In the mansion are the swimming tank, bowling alley and shooting gallery. There is a private electric plant, and laundry plant, a plant for filtering all water, and one for regulating all the steam heating. The swimming tank has its own accompanying hot and cold regulating apparatus.

One of the most important features of the "castle" is the grand organ. Rumour whispers that its total cost will be

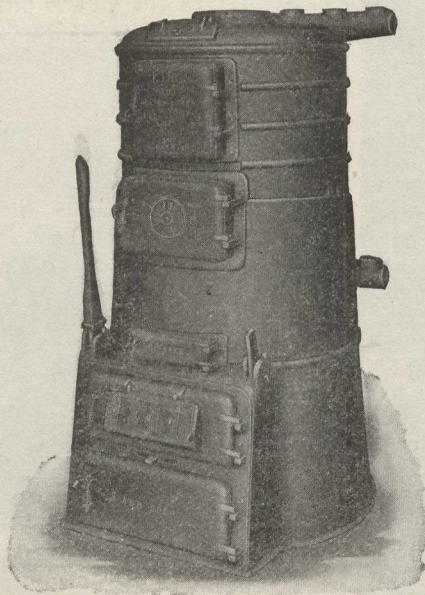
about \$60,000. It will be partly situated in the great hall and partly in the grand staircase, and some idea of its magnificent construction may be gathered from the fact that it can be played from three separate consoles, in three different parts of the house.

The stables, erected several years ago, are recognized by horsemen to be among the finest in finish and equipment in the world, although they are not as big as those of King George, nor Mr. Vanderbilt. Like the house, they are fire-proof, and are finished with open-timbered roof work.

When everything is completed, the house on the hill will be, indeed, a palace of delight. Everything contributory to luxurious comfort will be there. Sir Henry and Lady Pellatt plan to entertain a great deal, and when the great ones of the earth visit Toronto many of them will stay at the home of the genial colonel-millionaire. For Toronto will have a palace to be proud of.

The "KING" Heating System

With a "KING" Hot Water Boiler and "KING" Radiators, solves the house-heating problems. . .



No. 6 High Base "King" Boiler, showing double shaker.

The "KING" Boiler has ALL the latest improvements in operating equipment and fuel saving features known to boiler construction.

TROUBLE PROOF GRATES

The "KING" patented grades and shaking mechanism are of the side lever adjustable construction and are simple enough for a child to understand, yet the most efficient ash remover yet produced. No bolts or pins are used in attaching grades to the connecting bar.

GET OUR BOOKLET "COMFORTABLE HOMES." It explains very thoroughly.

STEEL and RADIATION, Limited

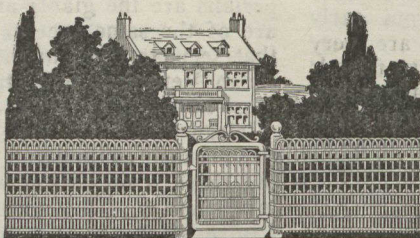
(HEAD OFFICE)

Fraser Ave., Toronto

Montreal, 138 Craig St. W.

Quebec, 101 St. John St.

Agencies in all leading cities.



Protect Your Property With Peerless Lawn Fencing

Ornamental fencing serves a double purpose. It not only enhances the beauty of your premises, but also protects it and your children, as well. It keeps out marauding animals and trespassers. It protects your lawns and flowers and always gives your property that orderly, pleasing appearance.

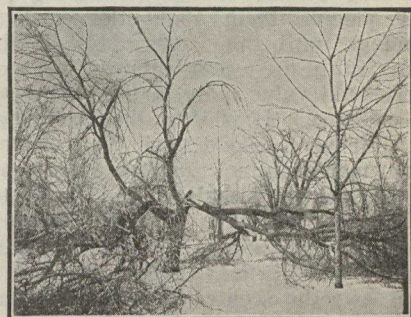
Peerless Ornamental Fencing

is the result of years of fence building. It is built to last—to retain its beauty and grace for years to come and should not be confused with the cheap, shoddy fencing offered by catalog houses. Peerless fence is built of strong, stiff wire which will not sag and the heavy galvanizing plus the heavy zinc enamel is the best possible assurance against rust.

Send for Literature

Shows many beautiful designs of fencing suitable for lawns, parks, cemeteries, etc. Agencies almost everywhere. Agents wanted in unassigned territory.

The Banwell-Hoxie Wire Fence Co., Ltd.
Winnipeg, Man. Hamilton, Ont.



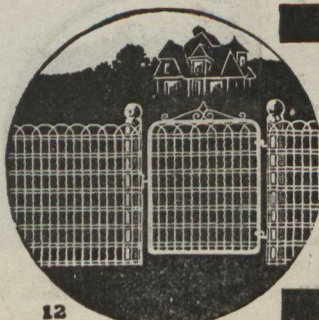
Save Your Trees

Hidden weaknesses and decay may make of your trees a menace to life and property. Take no chances—have our expert examination made without cost. We could have saved this tree at slight cost if taken in time.

THE CANADIAN DAVEY TREE EXPERT COMPANY

707 New Birks Bldg., Montreal
Box 34, Toronto

Should your copy of the Canadian Courier not reach you on Friday, advise the Circulation Manager.



12

IDEAL Lawn Fences and Gates

N EATEST, most lasting of lawn fences, any height from 2 to 8 feet, will beautify any grounds. Made of large gauge hard, springy wire, well-galvanized. Won't sag; costs little; endures years without painting. In glossy white and green.

HANDSOME GATES TO MATCH in lengths from 3 to 14 ft., single or double, with self-acting latch.

Drop a card and get Booklet 134
MCGREGOR BANWELL FENCE CO., Ltd.
WALKERVILLE, . . . ONT.