

GOOD THINGS COMING TO THEATRES OF ST. JOHN

MABEL TALIAFERRO, STAGE AND SCREEN CELEBRITY, WILL BE AT OPERA HOUSE FRIDAY



It is not often that citizens of St. John are afforded an opportunity of seeing a famous motion picture actress performing in person. This treat will be realized through the efforts of the Opera House management who has succeeded in booking Mabel Taliaferro. This noted picture star and talented actress will appear on the Opera House stage Friday afternoon and during the remaining performances on Friday evening, Saturday and Monday. On the legitimate stage she starred in "Polly of the Circus," "Mrs. Wiggs of the Cabbage Patch," "Nell," "Springtime," "The Land of the Heart's Desire" and many other great productions. She is presenting a sketch entitled "Comte," which was written for her by Tom Barry and produced by Joseph Hart, one of the leading vaudeville producers in America. Mabel Taliaferro is one of the few baby actresses who grew up to be a real stage star and whose record of infamy when she appeared in "Blue Jeans," to this day has been an unbroken string of successes. Her appearance here will undoubtedly be hailed with delight by lovers of the legitimate stage as well as patrons of vaudeville.

CHAPLIN'S PARTNER IS SERIOUSLY ILL



Baby Jackie Coogan, "The Kid," Fighting for Life in New York—Will Be Seen Here Tomorrow.

Above is a picture of little Jackie Coogan, "The Kid," in the Charlie Chaplin picture of that name, to be seen here at the Imperial tomorrow, Friday and Saturday. Little Jackie, who is only six and a half years old, is making a fight for his life against acute bronchial trouble at the Hotel Baltimore, New York. Jackie has become an international character through his wonderful work with Chaplin.

LOCAL NEWS

AUCTION SALE. Big auction sale at Arnold's Department Store, 90 Charlotte street, every evening this week. 29050-4-28

NOTICE OF MEETING. Meeting of the City Employees Union, local 1676, will hold their regular meeting in the Trade and Labor hall on Union street, Thursday evening, April 28, at 8 o'clock. All members are requested to attend. By order of the president. 4-28

AUTOMOBILE TIRES. The celebrated "Silver-Town" Goodrich Auto Tires, and other makes of Goodrich tires, plain and non-skid treads, also Canadian tires of various makes, can be obtained at Eddy & Co's, 49 Dock street. They also stock auto and bicycle tires and accessories of all kinds.

PRINCE WILLIAM HOTEL. First of May coming. Good suites or rooms to rent cheap. Janitor and maid service free. No heat or light bills to pay. Why not give your wife one Summer free from housekeeping worries. 4-28-29

Plans have been completed for a big re-union dance of the Woodmere Classes to be held in the "Gardens" on Friday evening, May 6th. Information, etc., at M. 2012.

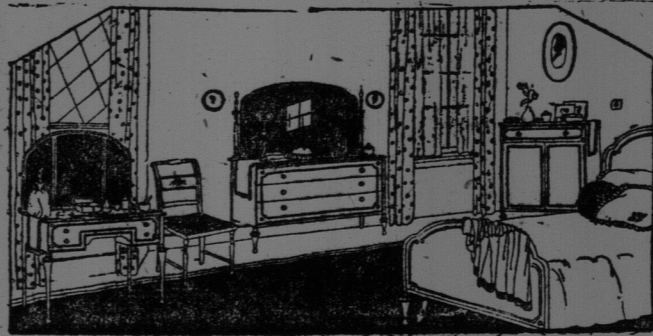
FIRE ALARM TELEGRAPH

- Revised Up to Date
2 No. 2 Engine House, King square
3 No. 3 Engine House, Union street
4 Cor. Sewell and Garden streets
5 Infirmity (Private)
6 Union St., near Cor. Mill and Dock Sts.
7 Prince Wm. street, opposite M. R. A. alley
8 Cor. North Wharf and Nelson street
9 Cor. Mill and Pond streets
10 Water street, opposite LeBlanc's alley
11 Waterloo street, opposite Peters street
12 Cor. St. Patrick and Union streets
13 Cor. Brunswick and Erin streets
14 Cor. Brussels and Richmond streets
15 Brussels street, Wilson's foundry
16 Cor. Brussels and Hanover streets
17 Cor. Brunswick and Erin streets
18 Cor. Union and Carmarthen streets
19 Cor. Courtenay and St. David streets
20 M. R. A. stores, private
21 Cor. Germain and King streets
22 Cor. Princess and Charlotte streets
23 No. 1 Engine House, Charlotte street
24 City Hall, Cor. Prince William and Princess streets
25 McLeod's Wharf, Water Street
26 Cor. Duke and Prince Wm. streets
27 McLevy Foundry, Water street, private
28 Cor. Wentworth and Princess streets
29 Cor. Duke and Sydney streets
30 Cor. Charlotte and Harding streets
31 Cor. Germain and Queen streets
32 Cor. Queen and Carmarthen streets
33 Cor. Sydney and St. James streets
34 Cor. Sydney and St. James streets
35 Carmarthen street, between Duke and Orange streets
36 Cor. Crown and Union streets
37 Cor. St. James and Prince Wm. streets
38 Cor. Duke and Wentworth streets
39 Cor. Broad and Carmarthen streets
40 Cor. Britain and Charlotte streets
41 Cor. Pitt and St. James streets
42 Sydney street, opp. Military buildings
43 East End Sheffield street, near Imperial Oil
44 Armory, Cor. Sheffield and Carmarthen St.
45 City Road, opposite Christie's factory
46 Cor. Dorchester and Hazen streets
47 Exmouth street
48 Waterloo, opposite Golding street
49 Waterloo street, opposite entrance Gen. Pub.
50 Elliot Row, between Wentworth and Pitt
51 Carleton street, on Calvin church
52 General Public Hospital, Waterloo St.
53 Cotton Mill, Courtenay Bay, private
54 Erin street, near Peters' Tannery
55 Cor. Clarence and Erin streets
56 Cor. King and Pitt streets
57 King street east, near Carmarthen
58 Brees's corner, King square
59 Cor. Orange and Pitt Sts.
60 Cor. Mockburn and Pitt

- NORTH END BOXES
121 Stetson's Mill Indian town
122 Cor. Main and Bridge streets
123 Electric Car shed, Main street
124 Cor. Adelaide and Newman streets
125 No. 5 Engine House Main street
126 Douglas Avenue, Opp. P. M. O'Neill's
127 Cor. Main street, near St. James street
128 Murray & Gregory's Mill, private
129 Cor. Egin and Victoria streets
130 Millidge Ave.
131 East Shore opposite Hamilton's Mills
132 Rolling Mills, Strait Shore
133 Cor. Sheriff and Strait Shore Road
134 Smith's Store, Warner's Mill
135 Alexandria school house, Holly street
136 Cor. Camden and Portland streets
137 Maritime Mill Works, private
138 Main street, police station
139 Main street, opposite Harrison street
140 Main street, Head Long Wharf
141 Fleming's foundry, Pond Street
142 Mill street, opposite Union Depot
143 Paradise Row, near Harris street
144 Cor. Paradise Row and Millidge Street
145 Cor. 4 Engine House, City
146 Mount Pleasant and Burpee Avenue
147 Cor. Stanley and Winter streets
148 Schofield's Turnout, Wright street
149 Rockland road, near Cranston Avenue
150 Rockland road, near Millidge street
151 Cor. Somerset and Barker streets
152 Lansdowne Ave.
153 Cor. City Road and Gilbert's Lane
154 Marsh Bridge, near Frederick street
155 At C. O. R. Round House
156 Cor. Thorne Avenue and Egbert street
157 Lansdowne Avenue
158 Lansdowne Avenue

- WEST END BOXES
4 No. 5 Shed
5 No. 4 shed, Union Street
6 Between No. 3 and No. 4 sheds
7 No. 7 Shed
8 Between No. 2 and No. 3 Sheds
9 Between No. 1 and No. 2 sheds. This Box is inside
12 At far end of No. 1 Shed
14 No. 15 Shed
15 No. 16 Shed
21 N. B. Southern Station
22 Cor. 4 Engine House, Exmouth St.
23 Albert and Minnetta streets
24 Ludlow and Germain streets
25 Lancaster and Duke streets
26 Ludlow and Gullian streets
27 Masonic Hall, Charlotte street
28 Tower and Ludlow streets
29 St. Patrick's Hall, St. John street and City St.
132 No. 6 Engine House, King street
133 Cor. Ludlow and Water streets
134 Cor. King and Market Place
135 Middle street, Old Fort
136 Gullford and Union Sts.
137 Cor. St. John and Victoria Sts.
138 Queen St., Opp. No. 7 Engine House
139 Lancaster and St. James St.
212 St. John and Watson Sts.
213 Winslow and Watson Sts.
215 C. P. R. Elevator
221 Prince St., near Dykeman's Cor.
Chemical No. 1, Telephone Main 553
Chemical No. 2, (North End) Telephone Main 553

BED-ROOM SUITES Moderately Priced



Included in this assortment is a six-piece "Adam" design done in Knonyx, consisting of Dresser, Dressing Table, Chiffonier, Bed, Bench and Rocker, now on display in one of our show windows. Regularly priced at \$300.00. Marked down to

Among bargains for thrifty buyers is our entire stock of "Period" Bedroom Suites. Beautiful in design, exquisite in workmanship, made of the choicest woods—Mahogany, Walnut, White, Ivory and Grey Enamels, as well as the ever popular Golden and Fumed Oak.

\$212.00

J. MARCUS, 30 - 36 Dock St.

BOYS

How many cents in the jar?

Nearest Guess Wins Bicycle.

One guess with every dollar spent in Boys' Shop.

See Window for details.

Contest Ends Saturday.

OAK HALL

PARENTS AND CHILD WELFARE

(Contributed.)

The importance of the parent, although repeatedly referred to, has not seemed to have been sufficiently insisted upon. The parents are the first recipients of the love-interest of their offspring, and therefore tend ever afterwards to serve as models for that interest. Not only are they the first objects of love, but because they represent a love attachment from which the child must ultimately break away in order to acquire its independence, they are the first objects to incite its antagonism, they are the first objects of its hate. The relation of the parent to the child is ambivalent and here we see an illustration of the parallel paths of opposites. The parents, then, are the first to attract the out-going energies—interest, instincts, love, hate—of the child; they are objects toward which its first attempts to find an object of interest outside its own body are directed; and therefore they more than any one or all else, are of importance in giving it its forms or expression. If our fate is the result of this early love life, and it is, then it is in these early days when we first learn to love that our life is decided. Ever afterwards we are conditioned by these first experiences, for no matter in what direction or how far we may go along the path of development, the goal we attain must be determined by the way we started out—whether we started straight forward, or deviated in this or that direction, little or much. To be sure there may be little about our developed, adult personalities to suggest where we came, but theoretically, in this or that direction, little or much, it should be possible to reconstruct the several stages. All this will make still better understandable the now recognized fact, namely, that much heretofore credited to heredity is really dependent upon these early influences. A child may grow like its parents for more reasons than because of its germ plasma. It may grow like them because, through love and admiration, it strives with every fibre of its being to be as much like them as it is possible to be. This extremely sensitized parent-child relation is peculiarly susceptible to aberration and distortions because of over-emphasis or under-emphasis addressed to some particular aspect of it, and the art of parenthood therefore becomes one of the most difficult arts to practice successfully. One of the most frequent of the many possible aberrations of the relation is produced by an attraction between parent and child which is too close, too long continued, and results in impairing the ability of the child to finally break with home dependence and become independent. The typical setting for such an outcome is produced when there has been but one child—a boy—and the mother has been early widowed either by death of husband or by separation on what amounts to the same thing, there is an absence of love between the parents. Under these circumstances the mother turns to her son as a love-object and lavishes upon him not only the love which under ordinary circumstances would go out to him, but, because another avenue of love expression is closed, she lavishes this additional quantity of love also on her son. In this way the son gets too much love and, too, love which is not just a mother's love, but, in addition,

tion, a love that should have had an adult form of expression, as that is the kind of expression of which she has been deprived. Mother and son under these circumstances grow up more like sweethearts than like parent and child, and hearts than like parent and child, and such a pleasure-premium to the child that it is unable to detach itself from the mother as love-object and find a wife and independence. Such "mother boys" are well known. They are wonderfully attentive to and appreciative of their mother, but remain in the household, never marrying. They are gentle in disposition and, from having been too much loved, are ill-adapted to withstand the hard knocks of reality. They are therefore thin-skinned and sensitive to a degree and under severe stress may develop a psychosis. A mental upset may happen also, when the mother dies, because the love is not capable of detaching itself from her and becoming attached to another love object. Or on the other hand, the mother's death may free the child. Some of these "mother boys," it is worth noting, never are able freely to accept this domination of the mother love, and their ordinarily affectionate conduct toward her may be interrupted by storms of reproach and violence, as if in a violent attempt to separate themselves from what they feel to be a restricting and paralyzing influence. A similar picture might be drawn of the relation of father and daughter.

The home has been absorbed by the child, and later expresses in itself in difficulties and failures of adjustment. Unhappiness thus propagates itself from generation to generation by more obvious means than the much blamed heredity. This fixation upon the mother has still further implications probably beyond that of a similar fixation upon the father. The mother not only represents love to the boy but love in general to the children of both sexes, and not only love but what is quite as important, protection. We have seen chickens run to get under their mother's wing at the coming of the hawk. You will remember that the young chickens all acted the same irrespective of sex. It is the same with young children. When trouble is in sight they seek their mother. The mother then comes to symbolize all those protective features of the family and home. That is, she becomes the goal of the regressive pathway. We originally came from our mothers, and now on the approach of danger we turn and go back to her. Much more than the father, then, she represents all those attachments of love and dependence with which the child, if it is to be successful, must break. Thus this fixation upon the mother not only may mean a crippling dependence and an absence of ability to make good as an independent individual, but it symbolizes lack of character development in general. Complete dependence is equivalent to failure and uselessness, lesser degrees to less obvious and less severe defects.

Accommodating.

An example of unconscious humor found in an advertisement in a Toronto street car: "Don't kill your wife, let our patent electric washing machine do your dirty work."



Like the Brilliance of Jewellery for Your Table

THE veritable glitter and gleam of gems—radiance such as your table never showed before—that is the charm the exclusive "Holmes & Edwards" hand-burnished lustre brings to your table.

And "Holmes & Edwards" yields the enduring satisfaction which only the bountiful use of pure silver can give—sterling silver alone surpasses it in life.

More silver is used in "Holmes & Edwards"—and then, in SILVER INLAIN, solid silver blocks are set in at the back of the bowl and handle; and in SUPER PLATE, a heavy extra plating is given to protect these points against wear.

Good jewelers gladly recommend "Holmes & Edwards" flatware and also "Holmes & Edwards" table appointments which harmonize with it in quality and gleaming lustre.

Manufactured Exclusively in Canada by THE STANDARD SILVER CO. OF TORONTO, LIMITED

"Protected Where The Wear Comes"

HOLMES & EDWARDS

Save Your Eyes

Good eyesight is beyond price, but our service and glasses that save your sight are supplied at reasonable charges—charges consistent with good work and individually designed, made, fitted and adjusted glasses.

D. BOYANER 111 Charlotte Street

La TOUR ST. JOHN'S COZY HOTEL. Beautifully furnished rooms and suites. overlooking King square. Special Rates to Permanent Guests, KING SQUARE.

USE The Want Ad Way

SNAP THE GREAT HAND CLEANER. Makes "Cleaning Up" Easy. It gets right under grease and grime and a few rubs leaves the hands clean, smooth and soft.