

HARRISON HOT SPRINGS BC 5 MILES FROM
VAGABOND OF THE

ST. ALICE HOTEL



THE PLEASURE
AND SCENIC
RESORT OF
THE PACIFIC
WEST

OPEN ALL THE YEAR

Write for illustrated booklet and rates.
G. E. HARTNESS, Manager.

Visitors to Chilliwack

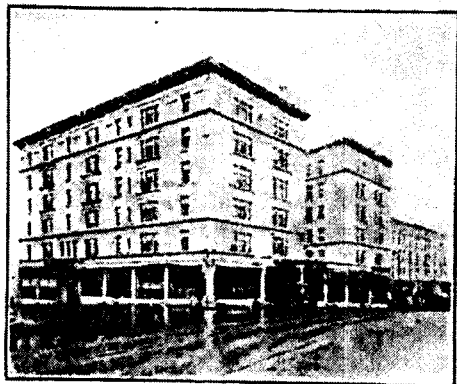
Should Make This Hotel Their
Headquarters.



Rates \$2.00 to \$2.50.

Hot Water Heating, Electric Lights,
Baths, Private Bus.

E. E. McLENNAN, - Proprietor
CHILLIWACK, B.C.



A.Y. P. Exposition

Visitors will appreciate the
luxurious comfort of the

Hotel Washington Annex SEATTLE

Modern to the last detail. Rooms en suite, for parties travelling together a specialty, fitted with every modern convenience. All outside rooms. Splendid cuisine and service. Rates reasonable. Situated within a minute's walk of the business and shopping centre of the city. Street cars pass the door. Auto bus meets all trains and boats. Seattle's House of Comfort.

J. H. DAVIS, Prop.