

THE FENIAN INVASION OF MANITOBA, IN TWELVE TABLEAUX.



The invading army.



The unsuspecting garrison.



The advance guard.



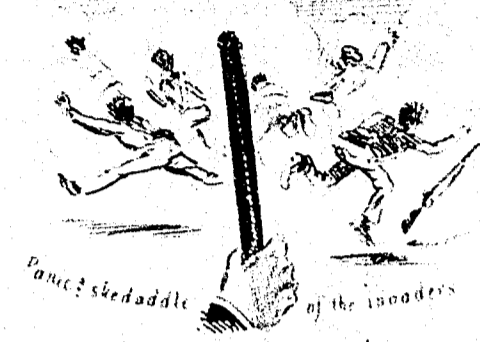
The attack.



The surrender.



The allied forces marching to the rescue.



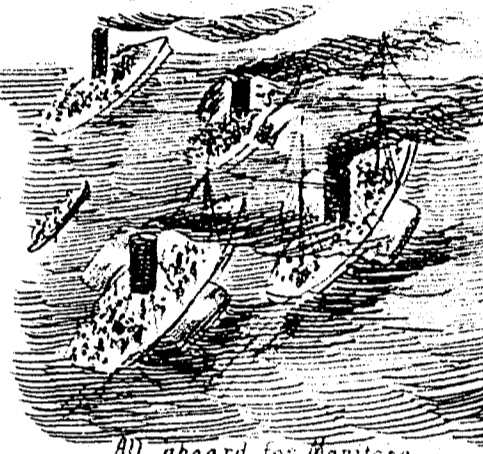
Panic & shedding of the Fenians.



The country is in danger! Planning its defense.



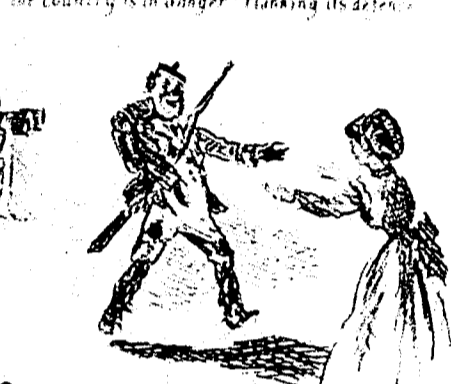
Volunteers to the front.



All aboard for Manitoba.



Arrival at Fort Barry. A head of the Fenians.



Return of the Fenian army covered with blood.

WANTED.—TEN RESPECTABLE YOUNG MEN and Three YOUNG LADIES, to qualify as Telegraph Operators. For particulars see advertisement of Dominion Telegraph Institute. Terms: \$30.00 for the full course, including use of instruments and line. Apply at the Dominion Telegraph Institute, 89, St. James Street, Montreal. Also, at the offices of the C. I. News, Heartstone and L'Opinion Publique, No. 1, Place d'Armes Hill. 4-11f

CANADA CENTRAL AND Brockville & Ottawa Railways.



GREAT BROAD GAUGE ROUTE TO OTTAWA.

ON AND AFTER MONDAY, SEPT. 25, 1871.

TRAINS WILL RUN AS FOLLOWS:— LEAVE BROCKVILLE.

EXPRESS at 7:30 A.M., arriving at Ottawa at 12:50 P.M., and at Sand Point at 1:30 P.M., connecting at Sand Point with Union Forwarding Company's Steamers.

LOCAL TRAIN at 1:40 P.M.

THROUGH OTTAWA EXPRESS at 4:10 P.M., connecting with Grand Trunk Day Express from the East and West, and arriving at Ottawa at 8:10 P.M., and at Sand Point 9:00 P.M.

LEAVE OTTAWA.

THROUGH WESTERN EXPRESS at 10:00 A.M., arriving at Brockville at 1:50 P.M., and connecting with Grand Trunk Day Express going East and West.

MAIL TRAIN at 5:20 P.M.

ARRIVE AT SAND POINT at 1:30 P.M., 7:15 P.M., and 9:00 P.M.

LEAVE SAND POINT at 5:30 A.M., 9:10 A.M., and 4:30 P.M.

Trains on Canada Central and Perth Branch make certain connections with all Trains on B. and O. Railway.

Certain connections made with Grand Trunk trains, Mail Line, and Union Forwarding Company's Steamers.

MORNING EXPRESS leaves Sand Point at 9:10 A.M., after arrival of Steamer from Pembroke, Portage du Fort, &c.

Freight loaded with despatch. The B. & O. & C. O. Railways being of the same gauge as the Grand Trunk, car-loads will go through in Grand Trunk cars without transhipment.

H. ABBOTT, Manager. Brockville, 1st Sept., 1871.

J. BAYLIS.—CARPETS, FLOOR CLOTHS, CURTAINS, &c. NOTRE DAME ST., EAST OF MCGILL.

TRUSSES! TRUSSES!

One of the best Assortment of TRUSSES in the Dominion, all kinds and sizes, suitable for the largest adult or smallest child, of the best English and American manufacture.

Also, Abdominal Supporters, Umbilical Bands, Suspensory Bandages, Chest Expanders, Eye Shades, Silk Stockings.

A Selection of Surgical Instruments. JAMES GOULDEN, DRUGGIST, 175, St. Lawrence Main Street. Branch: 363, St. Catherine Street, Montreal.

BED BUGS! BED BUGS!!

Use Harry Lewis' Bug Exterminating Soap. Certain death to all insects, &c. Only 25c. a box. For sale at all Drug Stores, and wholesale and retail at the

SOLE AGENT, JAMES GOULDEN, 175, St. Lawrence and 363, St. Catherine Streets, Montreal.

CARBOLIC ACID SOAP and POWDER, for Toilet, Disinfecting, and other purposes. SODA WATER, cold as ice, combined with pure Syrups, drawn from the Arctic Fountain.

BRUSHES—Hair, Tooth, Nail, Cloth, Shaving and Flesh Brushes, Dressing and Fine Tooth Combs, Sponges, Cologne, &c. J. GOULDEN, CHEMIST and DRUGGIST, 175, ST. LAWRENCE MAIN STREET. 4-12f Branch: 363, ST. CATHERINE STREET.

HELLEBORE! HELLEBORE

For the destruction of Caterpillars on Cabbage Plants, Gooseberry and Currant Bushes, &c., &c. CARBOLIC ACID, SOAP, & POWDER, For Toilet, Disinfecting, and other purposes.

SODA WATER—Cold as Ice, combined with pure Syrups, drawn from the Arctic Fountain.

BRUSHES—Hair, Tooth, Nail, Cloth, Shaving, and Flesh Brushes, Dressing and Fine Tooth Combs, Sponges, Cologne, &c. JAMES GOULDEN, 175 St. Lawrence St.; Branch, 363 St. Catherine St., MONTREAL. 3-24-1f

AGENTS WANTED, Male and Female, for new and useful inventions. Enclose stamp to Montreal Manufacturing Company, Box 6271, MONTREAL, P. Q. 4-8z

L. N. ALLAIRE, MANUFACTURERS' AGENT & COMMISSION MERCHANT.

STORE: 7 PETER ST. WINE VAULTS: SAULT AU MATELOT STREET. OFFICE: Corner of PETER & JAMES ST., QUEBEC. 3-15zz

USE ONLY THE GLENFIELD STARCH, EXCLUSIVELY USED IN THE ROYAL LAUNDRY OF ENGLAND, and in that of His Excellency THE GOVERNOR-GENERAL OF CANADA. 181f

"BEST IN USE." THE COOK'S FRIEND BAKING POWDER

IS THE ORIGINAL AND GENUINE. IF NEVER DISAPPOINTS. FOR SALE BY ALL GROCERS. 3-15H

WE HAVE CONSTANTLY IN YARD—LEHIGH COAL—all sizes.

WELSH ANTHRACITE COAL. SCOTCH STEAM COAL. PICTOU Do. BLACKSMITH'S COAL.

GRATE COAL. J. & E. SHAW, 82 MCGILL STREET. 4-13-m 57 WELLINGTON STREET.

FOR SALE OR TO LET. THAT LARGE FOUR-STORY CUT-STONE building in St. Thérèse Street, Montreal, now occupied by the Military Control Department as Stores. Very suitable for a Wholesale Boot and Shoe factory, or other similar purposes; also for Stores. Possession 1st of May. Apply to D. R. STODART, Broker, 48, Great St. James Street.

LEGGO & CO., Lezgotypers, Electrotypers, Stereotypers, Engravers, Chromo and Photo-Lithographers, Photographers, and General Printers by Steam Power. Office: No. 1, Place d'Armes Hill. Works: No. 519, St. Antoine Street, Montreal. Maps, Plans, Book Illustrations, Show-Cards, Labels, Commercial work of every description, executed in a superior style, at unprecedentedly low prices.

GRAY'S SYRUP OF RED SPRUCE GUM.

A BONA-FIDE PREPARATION OF THE RED SPRUCE GUM. For Coughs, Colds, and for giving tone to the vocal organs when relaxed, as well as a palliative of remarkable power in pulmonary disease. The Red Spruce Gum has always been held in the highest esteem in this country for the relief and cure of Chest complaints. It is now offered to the public in the form of a delicious and scientifically PREPARED SYRUP.

PREPARED BY HENRY R. GRAY, Dispensing Chemist, MONTREAL. For sale at all Drug Stores in the Dominion. Price, 3 cents. Druggists can be supplied from any of the Wholesale Houses. 3-25a

1851. Honorable EXHIBITIONS. Mention 1862. FOR GOOD AND CHEAP INSTRUMENTS.

C. H. CHADBURN & SON, OPTICIANS and MATHEMATICAL INSTRUMENT MAKERS. To H. R. H. the late PRINCE CONSORT. 71 & 73, LORD STREET, LIVERPOOL.

C. H. C. & SON beg respectfully to invite those visiting Liverpool to favour them with an inspection of their Show-room, which contains the largest Stock of Optical, Mathematical and Philosophical Instruments in England, all of the best manufacture, with the most recent improvements, and at the lowest possible prices. Telescopes, Spectacles, Opera and Field glasses, Microscopes, Lanterns, Pocket Barometers with mountain scales, Models of every description, &c. 4-15 f

FOR SALE. A STONE HOUSE, pleasantly situated in the best part of the Village of Varennes, and commanding a fine view of the River St. Lawrence. The House is 60 feet front by 30 feet deep, and there is a good garden with fruit trees and about 12 acres of ground. Apply to D. R. STODART, Broker, 140, St. JAMES STREET. 4-121f

TO CAPITALISTS. AN eligible opportunity is now offered to invest \$20,000 to \$30,000 in a business in this city. A return on the amount of Capital invested, at a rate of interest to be agreed on, will be guaranteed to any one desirous of entering into a limited partnership. Communications, which will be considered confidential on both sides, can be interchanged through D. R. STODART, Broker, 140, St. JAMES STREET. 4-141f Printed and published by GEORGE E. DREBETZ, 1, Place d'Armes Hill, and 819, St. Antoine street, Montreal.