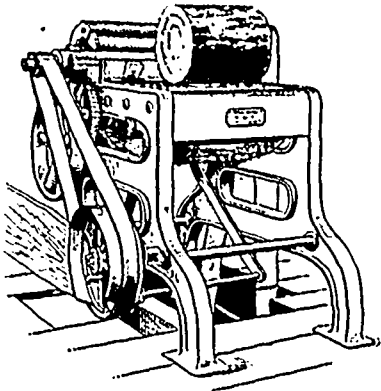


... STEARNS BROTHERS ...

Patent Rossing Machine



Why you should use this Rosser.

It will do double the work of any other.
It is the only machine made that will peel Cedar Shingle Blocks.
It will peel dirty blocks without taking the edge off the knives as they cut from the clean bark or block out.
It is a self-feeder, and very easy to operate.
It requires less power than a face wheel.
All iron and steel, very simple and durable.
It will ross knotty and uneven timber without waste.
It occupies about the same space as an ordinary planer.
You can have a chance to try a machine before buying it.

... MANUFACTURED BY ...

EASTMAN LUMBER CO.
EASTMAN, QUE.

Dry Kilns and Heaters

CHEAP

One Second-Hand Sturtevant Heater, 1,000 feet one-inch Pipe and Fan to match ; has been used only about four months.
One Sturtevant Heater, 5,500 feet one-inch Pipe and Fan to match ; in first-class order.
(The above have been used in lumber dry kilns, but are also applicable to heating buildings, etc.)

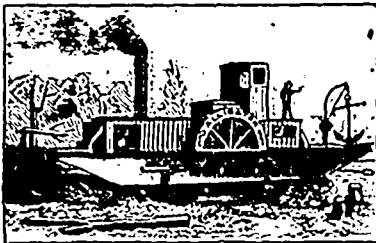
For prices and full particulars of the above, also our catalogue and prices of Heating and Ventilating, write the

McEachren Heating & Ventilating Co.
GALT, ONT.

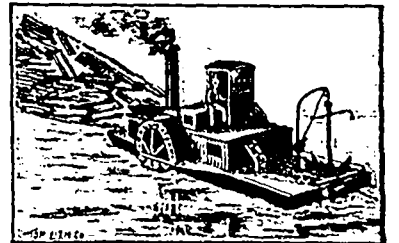
••• WEST & PEACHEY •••

SIMCOE, ONT.

MANUFACTURERS OF



ALLIGATOR STEAM WARPING TUGS



STEAM ROAD MAKER

ENGINES AND BOILERS FOR STEAM YACHTS



•• Saw Mill Machinery ••

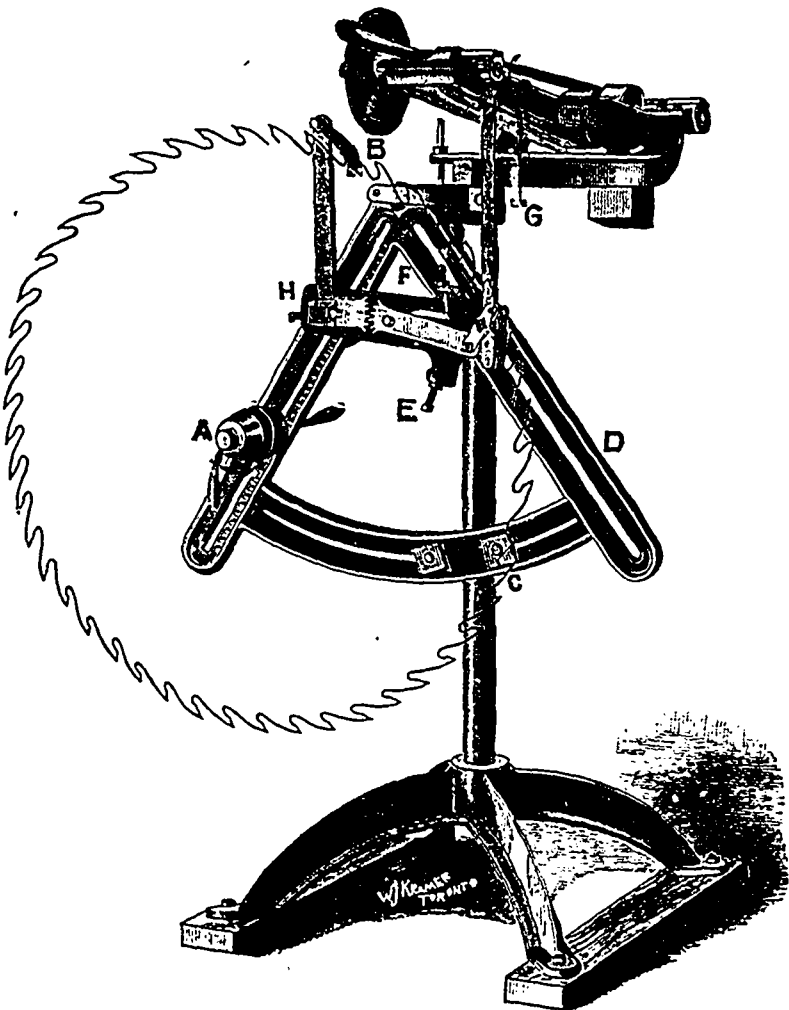
The **XXX** Saw Gummer and Sharpener

— *Has No Rival* —

FOR VARIETY, CAPACITY OR QUALITY OF WORK

... OR FOR ...

SIMPLICITY, DURABILITY, CHEAPNESS



Will take saws from 6 inches to 5 feet diameter ; sets the saw forward one tooth at a time automatically ; sharpens any saw (rip or crosscut) perfectly, giving the teeth any desired pitch or bevel, and making all the teeth exactly alike. Will sharpen 20 teeth in an ordinary saw mill in one minute, or 100 teeth in a shingle saw in four or five minutes. The cut shows outline of mill saw 54-inch diameter.

PEMBROKE, ONT., Jan'y. 28th, 1896.

Mr. F. J. DRAKE, Kingston :

Dear Sir,—Re the conversation you had with our manager, I am instructed to inform you that the machine we purchased from you early last spring has proved to be a very useful piece of machinery. Our Mr. McCool, who uses it, is greatly pleased with it, and recommends it to any person who may require a Saw Filer. Wishing you much success with your Filer, we remain,

Yours truly,

(Signed) THE PEMBROKE LUMBER CO.
Per W. H. Bromley.

Send for Catalogue

Manufactured only by

Canadian Locomotive & Engine Co.
KINGSTON, ONT.