

N. CURRY, President.

N. A. RHODES, Vice-President.

J. M. CURRY, Sec.-Treas.

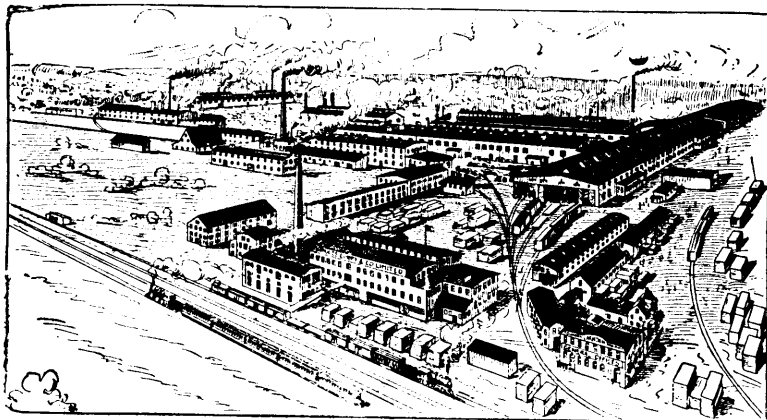
CAPITAL, \$1,000,000.

RHODES, CURRY & CO.

AMHERST, NOVA SCOTIA LIMITED

RAILWAY and STREET CARS

Special Cars for All Purposes.



Car Wheels, Axles, Forgings, Castings, Etc.

CAPACITY PER MONTH

300 Freight Cars	4 Passenger Cars	4 Snow Plows	3,000 Car Wheels
2,500 Car Axles	500 tons Castings	1,000 tons Forgings	

CANADIAN NORTHERN RAILWAY



The New Canadian Highway from Port Arthur, the
Head of Lake Superior, to:

Fort Frances	Emerson	Kamsack	Battleford
Winnipeg	Carman	Neepawa	Lloydminster
Portage La Prairie	Gladstone	Dauphin	Swan River
Brandon	Hartney	Grand View	Erwood
Morris	Carberry	Humbolt	Melfort

Line nearly completed to Edmonton and Prince Albert

PASSENGER Through Tickets can be procured from all Railway Ticket Agents via Chicago, choice of Lines to St. Paul, thence Great Northern or Northern Pacific Railways to Emerson and Canadian Northern Railway to destination.

FREIGHT Traffic arrangements with both the Canadian Pacific and Grand Trunk Railways for the routing of freight via Port Arthur and Canadian Northern Railway.

Freight and Passenger rates, folders and other information
furnished on application to

R. H. BELL

T.F. & P. A., Montreal

WM. PHILLIPS

General Eastern Agent, Toronto

GEO. H. SHAW

Traffic Manager, Winnipeg

JOHNSON'S LIST No. 58

WRITE FOR COMPLETE LIST—TOO LONG
TO PUBLISH

Send your requirements to Buy or to Sell.
I Buy for Cash.
If you do not see here what you want,
write; stocks change with every mail.
Fill out my blank forms? It saves time.

For Sale:

ELECTRICAL EQUIPMENT

SNOW PLOWS

- 1—Rotary Peckham-Ruggles, double truck.
- 1—Rotary single truck.
- 1—Maguire-Cummings Sweeper and Plow.
- 1—Nose, Taunton 8 wheel.
- 1— " " 4 " "

CARS

- (All styles, new and second hand)
- 5—51 ft. interurbans, new, now building.
- 2—44 " " complete, choice.
- 7—43 " " combination and straight.
- 3—41 " half open, half closed.
- 4—38 " suburbans.
- 1—38 " combination, choice, like new.
- 6—20-22 ft. city.
- 2—11 bench bodies, glass bulkheads, choice.
- 5—9 bench bodies, and new 21E Brill trucks.
- 6—10, 12, 14 bench, new.
- 1—Sprinkler, 2,500 gallons.

TRUCKS

- (All makes, new and used)
- 6—Sets Peckham, 14AXX, 6' 3" W.B.
- 8— " Bemis, No. 44, 4' 6" W.B.
- 5— " Barney & Smith, Class H, 6' 6" W.B.
- 4— " Dupont, single, 8' 6" W.B.
- 6— " Brill, Peckham, single, 6' to 7' W.B.

MOTORS—(Railway)

- 20—Lorain No. 34—50 hp.
- 60—12A, 38B, 49, 56, 3—Westinghouse.
- 50—G. E. 800, 1000, 1200, 57, 58, 52.
- 48—Stanley & Walker, 30, 25, 40, 50 hp.
- 4—80 hp. No. 39 Westinghouse.
- Generators, Alternators and Engines, all styles and sizes.

STEAM EQUIPMENT

CARS—(Passenger)

- 5—42-ft. stdg. Coaches seating 52, all new plush, just overhauled. Painted and lettered to suit. (Freight)
- 10—26' 6" Box, 36" gauge.
- 50—40,000 to 80,000 lb. flat and gondola, standard gauge.
- 50—Coal Hopper bottom, standard gauge.

DUMP CARS

(All sizes, new and second-hand)

LOGGING CARS

- 17—8-wheel, 40,000, stdg., Lima.
- 15—8-wheel, 50,000, stdg., Russell.

LOCOMOTIVES

(All sizes standard and narrow gauge)

STEAM SHOVELS

- 1—yd., 40-ton Marion B.
- 1 1/2 " 28 " Vulcan, Little Giant, Traction.
- 1 1/2 " " Industrial.
- 1 1/2 " 45 " Bucyrus.
- 1 1/2 " 47 " Marion A. Improved (new).
- 2 " 50 " Vulcan boom.
- 2 " 55 " Vulcan.
- 2 1/2 " 60 " Vulcan Giant D, boom (new).
- 2 1/2 " 60 " Marion G, 3 engines.
- 2 1/2 " 55 " Bucyrus, 3 engines.
- 3 " 70 " Vulcan Giant C, 1903.
- 3 " 79 " Victor.

Rails, turntables, cableways, bridges, cranes and other equipment.

Charles F. Johnson.
CODE, WESTERN UNION 623 ELLICOTT SQUARE
TELEPHONE, 3806 R SENECA BUFFALO, N.Y.