

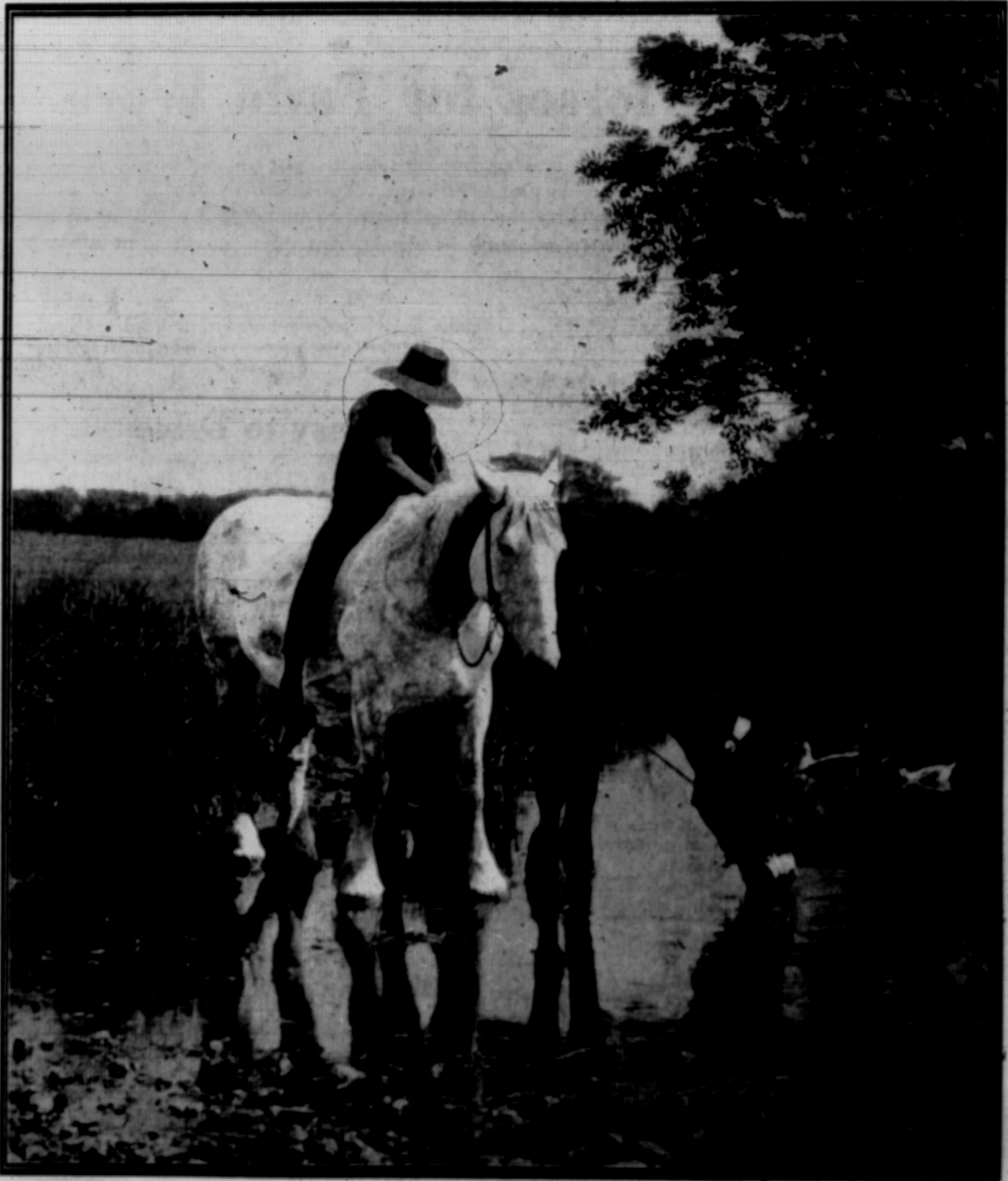
THE GRAIN GROWERS' GUIDE

Organization · Education · Co-operation

Winnipeg Man.

September 26, 1917

\$1.50 per Year



AT THE WATERING PLACE
Circulation Over 35,000 Weekly

1917.

se
es

th and
sed for
e attic
surface
wooden
2 x 4's
Winni-
te feet.

Board
quality
beats as
\$30.00

ply, per
No. 1,
\$1.25;

No. 1
to roll,
square

gated

7.00 per
roll, 16c.
5c.; Hip
7. 12c.;
12c. per
24c. per

on hand
otation.



1135
ribes \$.60
ribes 2.75
ribes .90
ribes
2.65
es .80
45

em

Japan finish
\$.60



opper
\$.75
e. per
.90
ers, per
.12
steners,
.14