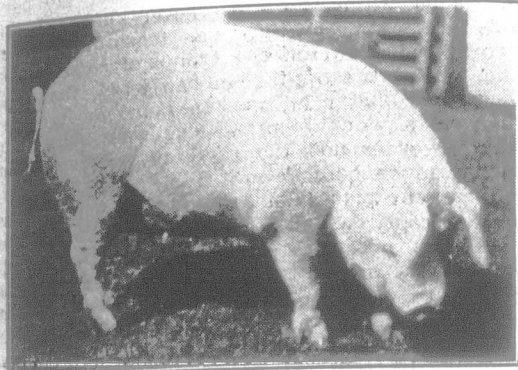
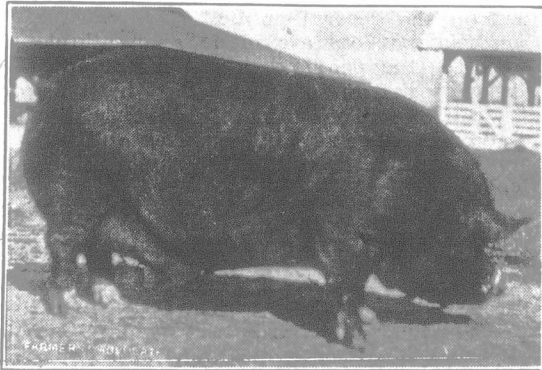


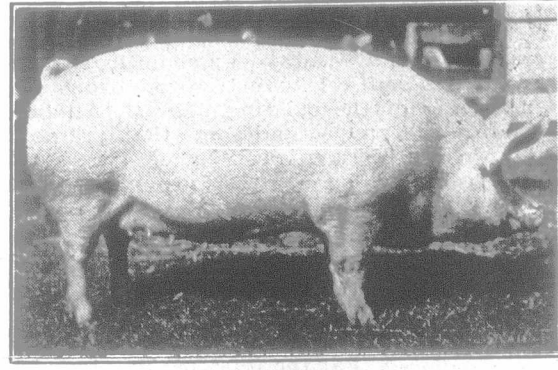
## Past Winners in Dairy and Swine.



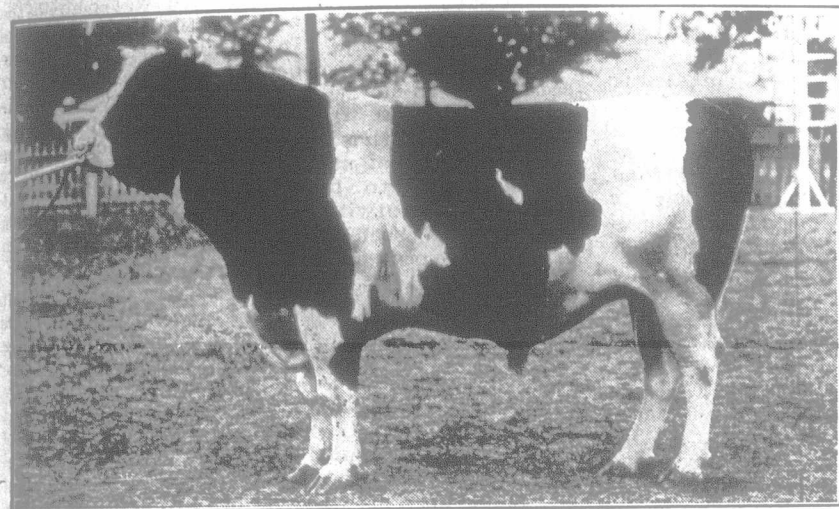
Chester White.



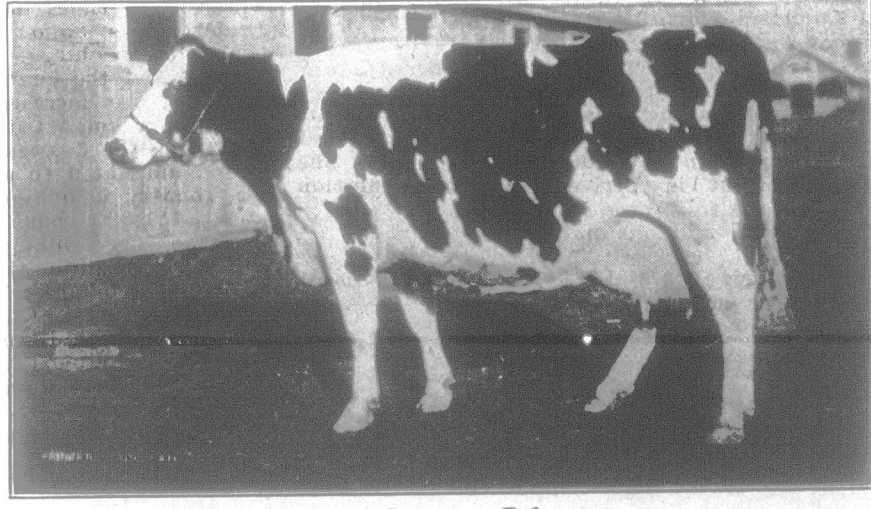
Berkshire.



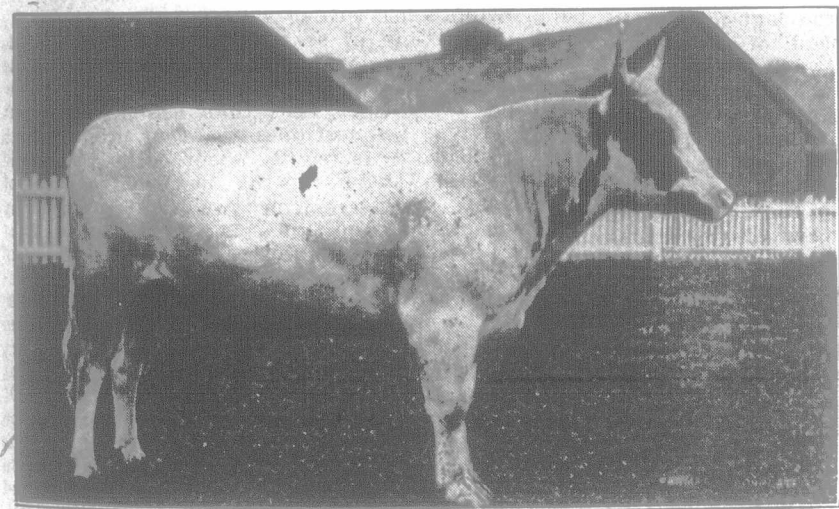
Yorkshire.



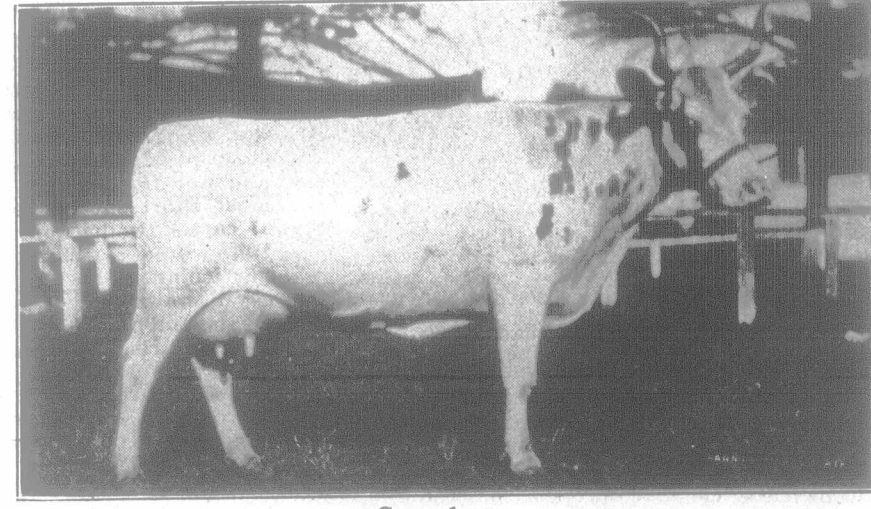
Artis Mercedes Posch.



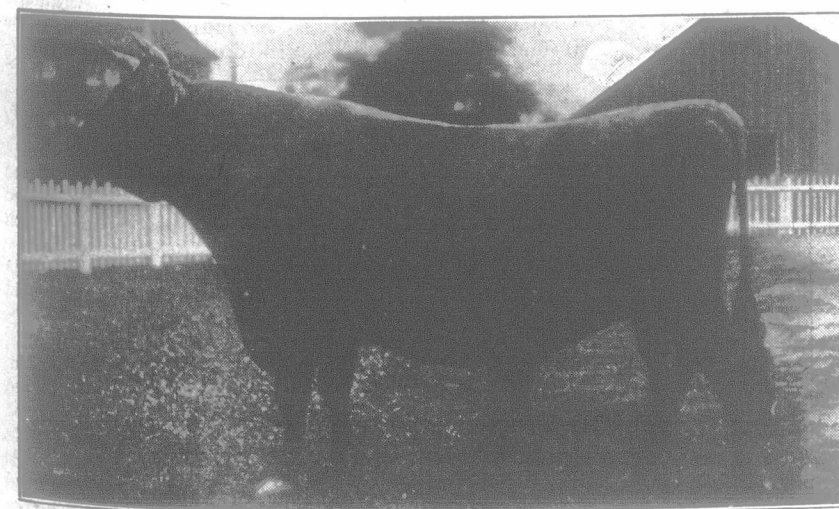
Cora Countess Echo.



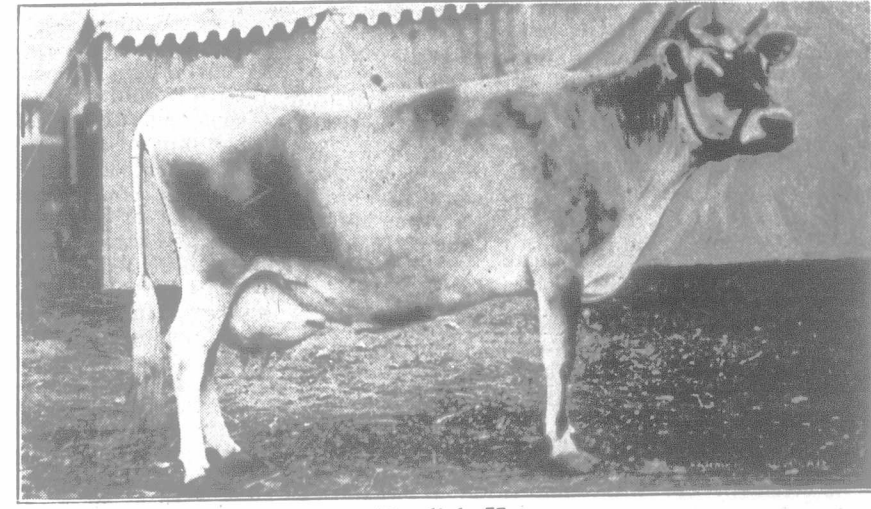
Hobland Masterpiece.



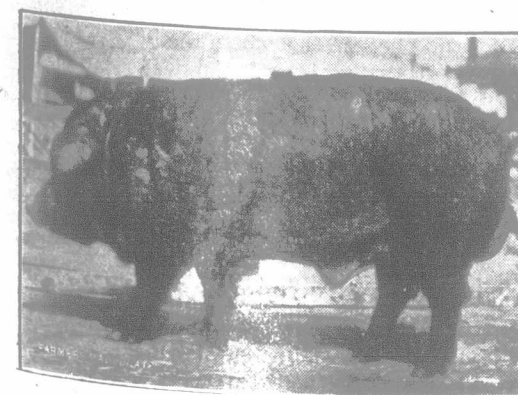
Snowdrop.



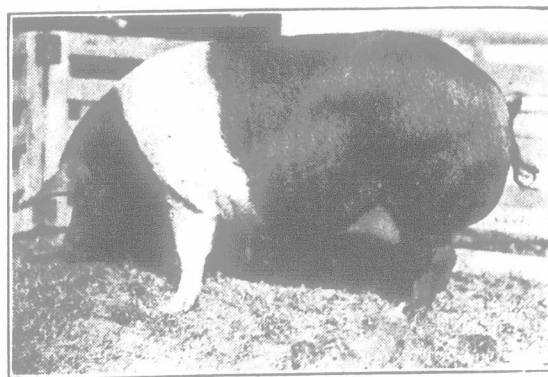
Sultan's Raleigh.



Twylsh II.



Duroc Jersey.



Hampshire.



Tamworth.

on the industry as a whole, which is becoming popular; already one section sells all in Boston at enhanced prices the demands. Several sections considering the adoption of and there is every indication that will be included in the selling

live stock are all comparative. Halifax, St. John, Sydney and market reports show that large from other districts are ane Maritime Provinces and are mpetition with Island produce; her than lack of production at t for this situation. The de al markets make it possible to e output, sometimes regardless hich is a decided advantage un an be so built that inferior ma mport. However, any who ity to visit Charlottetown arcially at the Easter season, will mmpares favorably with any.

ions are, during the warmer like those in Great Britain. appear to be more easily con aks of contagious diseases oc accountable to the impossibil hem in cars and bedding, but hich must be carefully guarded. The fly season is short and s in most sections. Frequent d pasturage during the grazing junction with a very responsive wing of large hay, grain and

is largely agricultural. During 01 to 1911, a decrease of 9.2 ed, many going to U. S. A. ada, and it is quite safe to of them came from the farms. witnessed a large decrease in ion but an increase in other ck as shown by the following

Number	De-crease	In-crease	Per cent.
91,232	34,314		24.3
35,985		2,204	6.5
120,396		7,617	6.7
56,377		8,370	17.43

to keep more stock is very decreasing population. Many are being imported by in and the Dominion Department s during the past two years bred sires in several localities. demand for quality is becoming and many sections, acting co-curing sires independent of the

other part of Canada is the ated as on the Island; every-orse and the majority own ex-rominence is given to speed k and ice whenever the seasons est is so acute, and the quality high, that this industry is not nder the present generation. represented principally by here have been of late some tions of Percherons. Type. quality are frequently found as of carefully breeding or good rtations.

monarchs in the olden days. industry has made such rapid has to remain within bounds. herds gave the beef industry a have been started of late and excellent development, and al show circuit is familiar with A few very good Angus cattle but the Shorthorn is the

more recent years, but it is now presented by some noted Avr and Jerseys. Records have been ven the breeders world-wide dis-erds of pure-bred animals are many grade heids are rapidly inence, particularly in the dis-eries are situated. Quality is very strongly. The beef and or many years suffered from t this will, due to educational e influence of cow testing as-ly die out. Selling of hay eatest drawback in some parts; many instances farmers have a cattle come out in the spring alk, then feed cannot profitably the greatest and most difficult Department of Agriculture: it poor cattle, but also the ques- ing. Fortunately this extreme t in but few sections. stry is being fostered by the