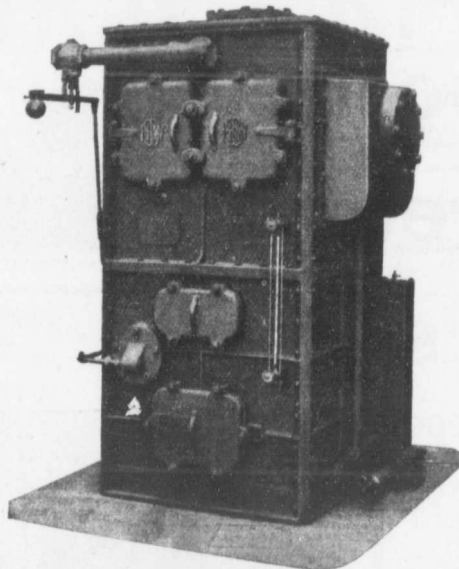


COCHRANE HEATERS

Utilize Waste Steam to Make Feed Water Hot

Save
Water
Coal
Repairs
Time



Are Cheap
To Operate
To Install
To Clean
To Repair

Canada Foundry Company, Limited

HEAD OFFICE AND WORKS: TORONTO, ONT.

District Offices: MONTREAL, HALIFAX, OTTAWA, WINNIPEG, VANGOUVER, ROSSLAND

RES THOMSON, President. J. G. ALLAN, Vice-President. JAMES. A. THOMSON, Secretary. ALEX. L. GARTSHORE, Treasurer.

THE GARTSHORE-THOMSON PIPE & FOUNDRY CO. LIMITED.

Manufacturers of

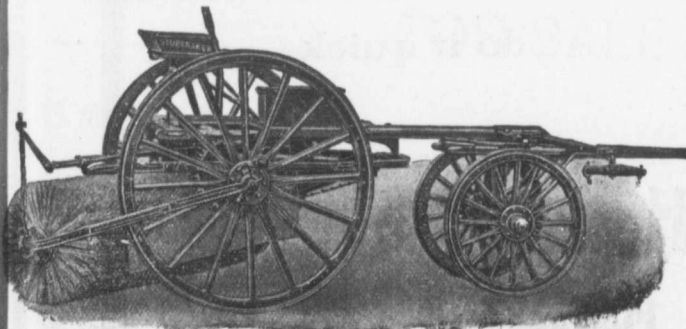
Flexible and Flange Pipe,
Special Castings and all kinds of
Waterworks Supplies.



3 inches to 60 inches diameter.

for Water, Gas, Culvert and Sewer

HAMILTON, ONT.



Stackpole Patent Improved Street Sweeping Machine is the Standard of Perfection

Because no sweeper so effectively does the work for which it is designed as "The Studebaker." It sweeps Clean. No sweeper is constructed with the same degree of care and mechanical precision. It wears well. "The Studebaker" has the smallest number of working parts, and has less gearing than any other sweeper made. It is free from all unnecessary complications. With reasonable care it does not get out of order. Send for complete descriptive catalogue.



Studebaker Sprinkler

(PATENT IMPROVED.)

Does not clog or get out of order. Greatest width of spray can be guided from driver's seat to any volume.

We also make an . . .

IMPROVED VERTICAL SPRAY

for Pavements

Geo. Heaman, Mnfr., London, Ont.