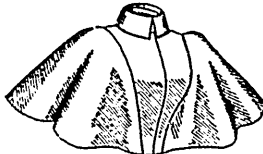


neck and waist, and the fulness pouches fashionably over a belt that is closed in front. A lining fitted by single bust darts, under-arm, shoulder seams and a curving center seam and closed at the center of the front gives perfect trimness, but it may be omitted. The neck is finished with a neck-band. Each of the two styles of collars is removable; one collar is of the plain stand-



9402



9402

Front View.

ing sort with bent corners and the other is a standing collar with shallow turn-down sections flaring at the front and back. The one-seam shirt-sleeves are of the newest cut and are gathered at the top and bottom and finished with cuffs that are closed with link buttons below slashes finished with underlaps and pointed overlaps and closed with a button and button-hole.

Shirt-waists of flannel, serge, velveteen, corduroy or silk, with linen collars, are stylish and comfortable for general wear. This mode is an unusually pretty one for these materials.

We have pattern No. 9392 in seven sizes for ladies from thirty to forty-two inches, bust measure. For a lady of medium size, the shirt-waist, except the collars, needs two yards and five-eighths of goods thirty-six inches wide and the collars require a half yard of material thirty-six inches wide. Price of pattern, 1s. or 25 cents.

**LADIES' DRESS-ING-SACK.** (TO BE MADE WITH TURN-DOWN OR SAILOR COLLAR.)  
(For Illustrations see Page 388.)

No. 9387.—An attractive dressing-sack is here shown made of striped French flannel. Under-arm and side-back gores and a curving center seam adjust the sack closely at the back and sides, but the fronts are in loose sack style and lap all the way down. Ribbon ties close the sack at the throat. The neck may be completed with a turn-down collar, or with a sailor collar that is rounded prettily away from the throat and bordered with a ruffle of the material having button-holed scollops for its edge finish. The comfortable two-seam sleeves are gathered at the top to stand out pret-

tily and may be plain at the wrist or finished with a ruffle matching the ruffle on the sailor collar. Fancy stitching done with embroidery silk gives quite a dainty effect to the sack.

Dressing-sacks may be made in this style of cashmere, flannel, Henrietta, eider-down, etc., with lace, fancy stitching and ribbon for decoration. Such thin fabrics as cambric, muslin, dotted Swiss and lawn are used for making dainty sacks profusely trimmed with lace or embroidered insertion and edging.

A dainty sack may be made of blue crêpe and trimmed with lace.

We have pattern No. 9387 in nine sizes for ladies from thirty to forty-six inches, bust measure. To make

the dressing-sack for a lady of medium size, needs three yards and three-fourths of goods twenty-seven inches wide. Price of pattern, 1s. or 25 cents.

#### LADIES' TWO-SEAM DRESS-SLEEVE DRAPED IN BUTTERFLY STYLE.

(For Illustrations see Page 398.)

No. 1480.—Soft wool goods were used for this sleeve, which is stylish in effect and is mounted on a coat-shaped lining. It has two seams and its skilful shaping and gathers at the upper edge for a short distance along the seams and at the center, produce a graceful butterfly puff at the top. The puff stands out with a becoming broadening effect and below the sleeve follows the outline of the arm closely, the shaping, however, making it perfectly comfortable. The wrist may be plain or curved prettily upward at the outside of the arm and a lace frill is a stylish decoration.

The sleeve will make up effectively in plain or figured silk or in any of the woollens appropriate to the season. A frill of edging will be added at the wrist when the sleeve is to be inserted in a dressy bodice and further decoration may be contributed by encircling bands

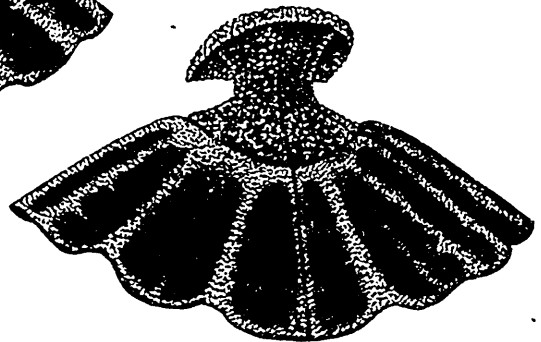


9410

Front View.

LADIES' CAPE OR COLLARETTE, WITH SECTIONAL YOKE COLLAR.

(For Description see Page 383.)



9410

Back View.

of insertion or rows of narrow velvet ribbon arranged in groups of three.

We have pattern No. 1480 in seven sizes for ladies from ten