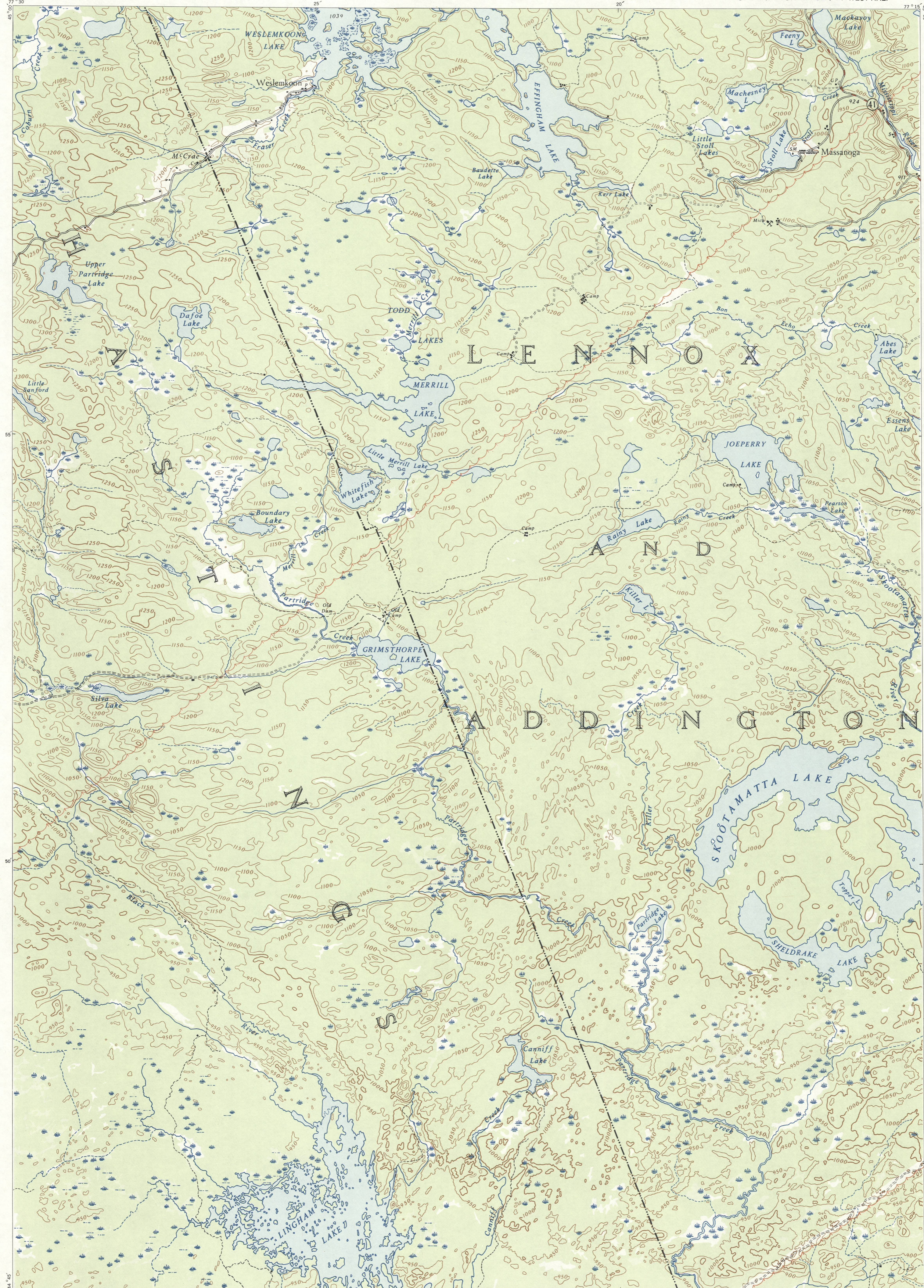




CANADA
DEPARTMENT OF NATIONAL DEFENCE
ARMY SURVEY ESTABLISHMENT

REFERENCE

- Roads:
- hard surface, heavy duty 3 or more lanes Part completed
 - hard surface, heavy duty 2 lanes
 - hard surface, medium duty 3 or more lanes
 - hard surface, medium duty 2 lanes
 - loose surface, graded and drained 3 or more lanes
 - loose surface, graded and drained 2 lanes
 - Other Roads: Private Road (than 14 ft. wide) Poor condition
- Trail
- Railway, double track
- Railway, single track
- abandoned
- narrow gauge or electric
- Bridge, underpass or overpass
- Boundaries, International
- County
- Reservation Indian
- Military, Nat. or Prov. Park, etc.
- Electric Power Line
- Telephone, trunk route
- Triangulation Station
- Boundary of Survey Monument
- Bench Mark
- Spot Height, (in feet)
- House, Barn
- Buildings
- Mill or Factory, small
- School
- Church
- Post Office
- Telephone Exchange
- Mine or Open Cut
- Cemetery or Churchyard
- Quarry
- Sand or Gravel Pit
- Cliff
- Cutting
- Embankment, Dump, etc.
- Lighthouse
- Wharf or Pier
- Foreshore Flats
- Swamp or Marsh
- Lake or Slough, non permanent
- Glacier or Snowfield
- Stream, intermittent
- Contours, elevation
- depression
- Wooded Areas, heavy
- light



INDEX TO ADJOINING SHEETS

46° 00'	31 1/4	31 1/3	31 1/2
	31 1/5	31 1/4	31 1/3
44° 30'	31 1/4	31 1/4	31 1/4

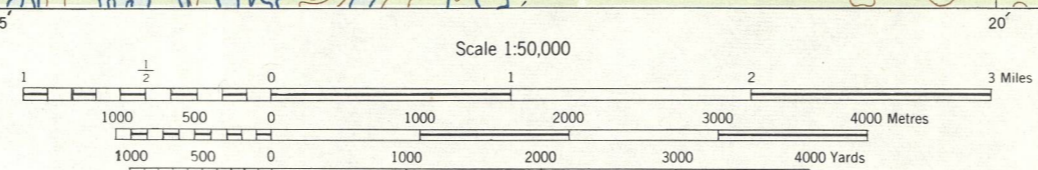
See "Index of Maps Available" for sheets published.

The general public may obtain copies of this map from the Map Distribution Office, Dept. of Mines and Technical Surveys, Ottawa, at 25 cents each.

MAZINAW LAKE
31C/14 WEST HALF
SECOND EDITION

Surveyed, compiled, drawn and printed by the Army Survey Est., R.C.E. 1946-47. Aerial photography by R.C.A.F., 1938. Converted from the first edition of the 1:63,360 map to 1:50,000 by the A.S.E. 1950.

MAGNETIC DECLINATION 31° 39' WEST AT CENTRE OF SHEET, 1950. Annual magnetic change 2' easterly.



CONTOUR INTERVAL 50 FEET. All Elevations in Feet above Mean Sea Level.

SUPERSEDED EDITION