

THE DEATH OF THE YEAR.

A cloud came out of the golden west,
A bell rung over the silent air,
The sun god hurried away to rest,

"How bright the year goes out!" they said;
"The glow of the sunset lingers long,
Knowing the year will be over and dead,

"How sadly the year came in!" they said,
I listened and wondered in dusk of night,
To me the year that might come instead

The sun-kissed clouds grew pale and grey,
The bells hung silent in high mid-air,
Waiting to ring the year away

Oh, hearts! that beat in a million breasts,
Oh lips! that utter the same old phrase,
I wonder that never a sorrow rests

Is it just the same as it used to be!
Have new years only a gladder sound?
For ever and always it seems to me

There is no cloud in the darkened west,
The bell is silent in misty air,
The year has gone to its last long rest,

OUR CHESS COLUMN.

TO CORRESPONDENTS.

J. W. S., Montreal.—Letter and paper to hand.
Correct solution received of Problem No. 463.

C. E., de St. Giles, Sorel, P. Q.—Letter received.
Many thanks for Problems. They came too late for
insertion in to-day's Column.

A week or two ago we spoke of comparing the best
play of the experts in chess of the present time with
that of the great masters of sixty or eighty years ago.

DR. ZUKERTORT'S VISIT.

The intelligence that Dr. Zukertort, the famous
chess player, is to visit Canada, which was made
known through those columns a few days ago, has
been received with much satisfaction by lovers of
the game here.

Dr. Zukertort, in response to the challenge of Herr
Steinitz to play him a match at the Paris Chess Club
upon the Doctor's return to Europe, writes as follows:—

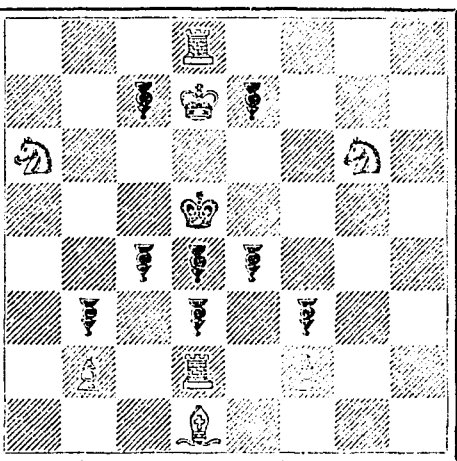
MR. BLACKBURNE AT NEWCASTLE.

On Tuesday, 13th current, at Newcastle-on-Tyne,
Mr. Blackburne played 22 simultaneous games, of
which he won 19, lost one (to Mr. E. Downey), and
drew two (with Miss Kate Spence and Mr. J. Campbell
respectively); and on Thursday, the 15th current,

PROBLEM No. 465.
THE CHRISTMAS TREE.

Composed for the "Canadian Illustrated News."
By Chev. E. de Saint-Giles.

BLACK.
WHITE.



White to play and mate in two moves.

SOLUTION OF PROBLEM NO. 463.

White. Black.
1 Kt to K B 6 1 Any
2 Mates acc.

GAME 502ND.

The following rather curious game was played in
the Vizayanagram Tourney:

(Four Knights.)

Table with columns for White (Mr. Gossip) and Black (Rev. C. E. Ranken) listing chess moves like 1 P to K 4, 2 Kt to K B 3, etc.

NOTES

- (a) An interesting variation, about which but little is known.
(b) B to B 4 is slightly preferable, but the text move is good enough.
(c) If 6 Kt takes Kt, then Q to K 2, which preserves Black from any serious damage...

BURLAND LITHOGRAPHIC CO'Y.
(Limited.)

NOTICE

IS HEREBY given that a Dividend of FIVE PER CENT. on the Paid-up Capital Stock of the Company, has been declared for the half-year ending 31st Dec. inst., and that the same will be payable at their Offices, 5 and 7 Bleury Street, on and after

THURSDAY, 10th JANUARY, 1884.

The ninth Annual General Meeting of the Stockholders will be held at the Company's Office on

Wednesday, February 6th, 1884, at 3.30 o'clock, p.m., for the election of Directors and transaction of other business.

By order of the Board, F. B. DAKIN, Secretary.

Montreal, Dec. 15th, 1883.

FREE! FREE!! FREE!!!

This Season's New Descriptive Catalogue and Price List of Plays, Dramas, Farces, Guide Books, Scenery (Paper), Speakers, Ethiopian Drama, Tableaux Lights, Colored Fire, Pantomime, Burnt Cork, Wigs, Beard, &c., &c.

In fact, everything for Amateur Theatricals. SAMUEL FRENCH & SON, 38 E 14th St., New York.

CHILLED IRON ROLLS

THE SUBSCRIBERS HAVE FOR SALE

TWO CALENDER MACHINES

Each of two sets of CHILLED IRON ROLLS.—one of 14 inches diameter by 35 in length; the other, 13 inches diameter by 26 in length. Both Machines are powerful and in good running order, and could be used for rolling Metal, Leather, Paper, Straw-Board, Cloth, &c. Will be sold cheap and upon satisfactory terms. Apply to

THE BURLAND LITHO. CO., 5 and 7 Bleury Street, Montreal.

Canadian Magazine

OF Science and th Industrial Arts. PATENT OFFICE RECORD.

EDITOR—HENRY T. BOVEY, M.A. (Camb.), Associate Memb. Inst. C.E.; Memb. of Inst. M.E. (Eng.) and American Inst. M.E., Professor of Civil Engineering and App. Mechs., McGill University.

Every effort will be made to render the publication a useful vehicle for the conveying of information respecting the latest progress in Science and the Arts.

It is hoped that the MAGAZINE will also be a medium for the discussion of questions bearing upon Engineering in its various branches, Architecture, the Natural Sciences, etc., and the Editor will gladly receive communications on these and all kindred subjects. Any illustrations accompanying such papers as may be inserted will be reproduced with the utmost care.

A space will be reserved for Notices and Reviews of New Books, and Resumes will be given of the Transactions of various Engineering and Scientific Societies.

The PATENT OFFICE RECORD will continue to be a special feature of the Magazine; and will be published as an Appendix to each number. The Illustrations, however, will be considerably enlarged, so that each invention being more easy to examine will be made clearer and more intelligible to the general reader. This Record gives information of the great value to engineers, manufacturers, and to all persons interested in the different trades.

In view of these great improvements the subscription price will be \$2.50 payable in advance, and it is confidently anticipated that a large increase will be made in the number of subscribers.

The efficiency and success of the Magazine, the only one of the kind in Canada, must in a great measure, depend upon the hearty co-operation and support of the Public.

NOTE.—All communications relating to the Editorial department should be addressed to the Editor, 31 McTavish St., Montreal.

All business communications, subscriptions, and payments to be addressed G. B. BURLAND, Manager, BURLAND LITHOGRAPHIC CO., 5 & 7 Bleury St., Montreal. Advertising rates will be given on application to the Office of the Company.

THE COOK'S FRIEND BAKING POWDER

It is a Household Word in the land, and is a HOUSEHOLD NECESSITY. In every family where Economy and Health are studied. It is used for raising all kinds of Bread, Rolls, Pancakes, Griddle Cakes, &c., &c., and a small quantity used in Pie Crust, Puddings, or other Pastry, will save half the usual shortening, and make the food more digestible.



IT SAVES TIME, IT SAVES TEMPER, IT SAVES MONEY. For sale by storekeepers throughout the Dominion, and by the manufacturer, W. D. McLAREN, UNION MILLS, 55 Collicie St.

British American BANK NOTE COMPANY. MONTREAL.

Incorporated by Letters Patent. Capital \$100,000.

General Engravers & Printers

Bank Notes, Bonds, Postage, Bill & Law Stamps, Revenue Stamps, Bills of Exchange, DRAFTS, DEPOSIT RECEIPTS, Promissory Notes, &c., &c., Executed in the Best Style of Steel Plate Engraving. Portraits a Specialty. C. B. LINDMAN, President & Man.

THIS PAPER MAY BE FOUND ON FILE AT GEO. P. ROWELL & CO'S Newspaper Advertising Bureau (10 SPRUCE STREET), WITH ALL ADVERTISING CONTRACTS MAY BE MADE FOR IT IN NEW YORK.

THE BURLAND LITHOGRAPHIC COMPANY (LIMITED)

CAPITAL \$200,000, GENERAL Engravers, Lithographers, Printers AND PUBLISHERS, 3, 5, 7, 9 & 11 BLEURY STREET, MONTREAL.

THIS ESTABLISHMENT has a capital equal to all the other Lithographic firms in the country, and is the largest and most complete Establishment of the kind in the Dominion of Canada, possessing all the latest improvements in machinery and appliances, comprising:—

- 12 POWER PRESSES
2 PATENT ENVELOPE MACHINES, which make, print and emboss envelopes by one operation.
1 PATENT LABEL GLOSSING MACHINE,
1 STEAM POWER ELECTRIC MACHINE,
4 PHOTOGRAPHING MACHINES,
2 PHOTO-ENGRAVING MACHINES,
also CUTTING, PERFORATING, NUMBERING, EMBOSING, COPPER PLATE PRINTING and all other Machinery required in a first class business.

All kinds of ENGRAVING, LITHOGRAPHING, ELECTROTYPING AND TYPE PRINTING executed in THE BEST MANNER AND AT MODERATE PRICES.

PHOTO-ENGRAVING and LITHOGRAPHING from pen and ink drawings A SPECIALTY. The Company are also Proprietors and Publishers of the CANADIAN ILLUSTRATED NEWS, L'OPINION PUBLIQUE, and SCIENTIFIC CANADIAN.

A large staff of Artists, Engravers, and Skilled Workmen in every Department. Orders by mail attended to with Punctuality; and prices the same as if given personally. G. B. BURLAND, MANAGER.