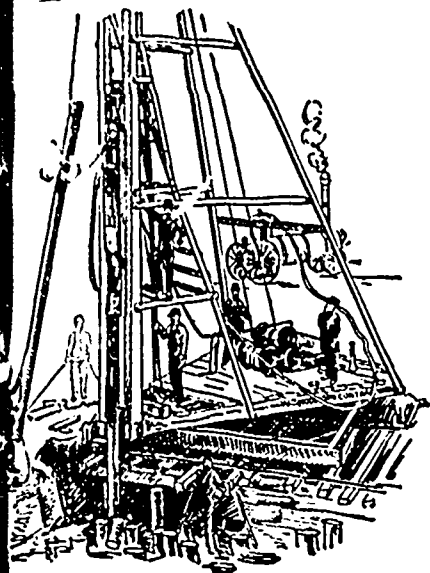


MUNICIPAL ENGINEERS, CONTRACTORS AND MATERIALS



PILE DRIVING

on land or water by Steam Pile Drivers or Drop Hammers.

**Portable Boilers
Hoisting Engines
Pumping Machinery
TO LET**

Bridge Building, Trestle Work, Wharves,
Dams, Diving Submarine Work and
General Contracting.

WM. HOOD & SON
10 Richmond Sq. - MONTREAL

DEBENTURES BOUGHT

Municipalities saved all possible trouble
by applying to

G. A. STIMSON & CO.
Investment Dealers

24 and 26 King St. W. - TORONTO

Paving Granite

Granite Sets for Street Paving. - CURBING cut
to any shape ordered. - Fine Rich Colors for
Building and Monumental Purposes.

Quarries, St. Philippe d'Argenteuil, P. Q.

Address all communications to

JOS. BRUNET - COTE DES NEIGES, MONTREAL

Please mention the CONTRACT RECORD
when corresponding with advertisers.



THIS Preparation is used for the following purposes,
Prevention of Dry Rot, Fungus, Decay and the at-
tack of White Ant and Termites in Timber, Preser-
vation of Beams, Sills, Flooring, Wainscoting, Shingles, Wood
Curbing, Sidewalks, Slat-walks, and Block Pavements.
Preparation for sale or Timber treated at Factory,
Corner Shaw Street and C. P. R. Track.
Circulars sent of Application. Tel. 978.

Engineering Contract Company

Main Office:
EMPIRE BUILDING, 71 BROADWAY, NEW YORK
HENRY F. DUCK, MANAGER FOR CANADA.

Canadian Office:
TEMPLE BUILDING, TORONTO, ONT.

**BRIDGE SUB-STRUCTURES, WATER POWER DAMS, CANAL WORK
and CAISSON FOUNDATIONS a Specialty**

PORTLAND CEMENT

Samson Brand

Magnet Brand

MADE AT SHALLOW LAKE, ONTARIO

Our celebrated SAMSON BRAND has been before the public for many years, and has made hosts of friends
among Contractors and Municipal Corporations until it has become one of the leading Cements on the market to-
day, being excelled by none. This year we have decided to place the MAGNET on the market, and respectfully
ask consumers to give it a trial. It will, we think, do its own advertising.

Correspondence invited.

GEO. S. KILBOURN, Secretary-Treasurer.

WORKS: Shallow Lake, Ont. - HEAD OFFICE: Owen Sound, Ont.

**Dominion
Bridge
Co., Ltd.**

P. O. Address, MONTREAL, P. Q.
Works at LACHINE LOCKS, P. Q.

STEEL BRIDGES

For Railways and Highways

Piers, Trestles, Water Towers
Tanks, Buildings, Roofs, Girders,
Beams and Columns

Toronto Agent: **GEO. B. EVANS,**
38 Canada Life Bldg., TORONTO, ONT.

W. & F. P. CURRIE & CO.

MONTREAL

Importers of

SEWER PIPES,

CHIMNEY TOPS,

VENT LININGS,

FLUE COVERS,

FIRE BRICKS,

FIRE CLAY,

WHITING.



PORTLAND CEMENTS,

HIGH GRADE ENGLISH

B. S. & Co. "ANCHOR,"

ALSO OTHER BRANDS,

PLASTER OF PARIS

BORAX,

CHINA CLAY.

The KERR ENGINE COMPANY, Limited



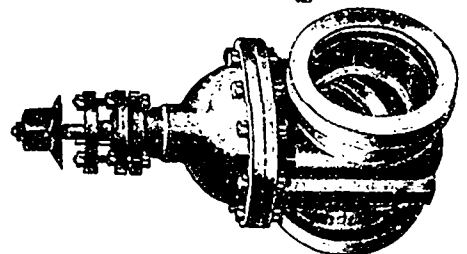
We Manufacture

WATERWORKS PUMPS

HYDRANTS AND WATER GATES

Write for Quotations.

WALKERVILLE, - ONTARIO



THE CANADIAN SEWER PIPE CO.

MANUFACTURERS OF . . .



- FOR -
**SEWERS,
CULVERTS
AND
WATER PIPES.
INVERTS**
For Brick Sewers

Write for Discounts

ST. JOHNS, P. Q. HAMILTON, ONT. TORONTO, ONT.