



## A Common Error.

**CHOCOLATE AND COCOA** are by many supposed to be one and the same, ONLY that one is a powder (therefore more easily cooked) and the other is not

### THIS IS WRONG - -

Take the Yolk from an Egg,  
Take the Oil from the Olive,

WHAT IS LEFT?

A RESIDUE. So with COCOA.

—IN COMPARISON—

**COCOA** is skimmed milk.  
**CHOCOLATE** pure cream.

C. A. CHOUILLOU,

12 and 14 St. John Street, - MONTREAL.

—THE—

## Western Milling Co., Ltd.

**STRONG BAKERS  
AND  
HUNGARIAN  
PATENT FLOUR.**

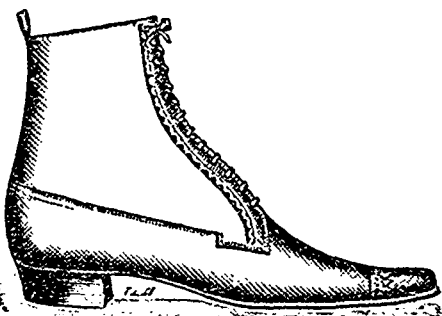
Awarded medal and  
Diploma Columbian  
Exhibition, Chicago,  
1893.

**Manufacturers of Flour, Feed,  
And dealers in Grain.**  
Best Hard Wheat only used.

REGINA, N.W.T.

**Savage Indians** Used to wage war where Minneapolis and St. Paul now stand. To-day these great cities are inhabited by people of culture and good taste and they travel via **The North-Western Line.**

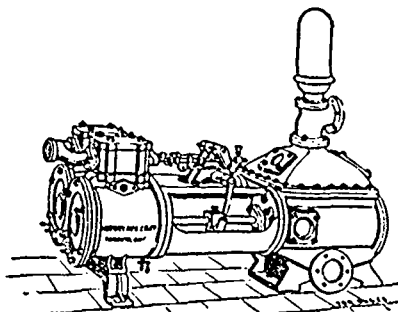
THE J. D. KING COMPANY, Ltd



Manufacturers, Importers and  
Wholesale Dealers in ) **Fine Boots and Shoes.**

122, 124 and 126 Wellington St. West, TORONTO.

One of the comforts of life is to have a new Boot or Shoe that fits your foot so nicely and comfortably that you are not conscious that it is the first time you have worn them. Such boots are made by the J. D. King Co., Ltd. in sizes and half sizes, and from two to six different widths. You will find our boots sold by all the principle dealers.



## Northey Mfg. Co., Ltd.

**Steam Pumps  
FOR ALL PURPOSES.**

—Sole Agents—

**Waterous Engine Works Co., Ltd.**  
WINNIPEG, MANITOBA.

Andrew Allan, President. John McKechnie, Supt.  
F. H. Brydges, Vice-President. W. R. Allan, Sec.-Treas.

## THE VULCAN IRON COMPANY,

OF MANITOBA LIMITED

MILL ROLLS GROUND & CORRUGATED.  
Architectural Iron Work.

## ENGINE AND BOILER WORKS,

GENERAL BLACKSMITHING.

POINT DOUGLAS AVE., WINNIPEG.

MUNROE & CO.,

Wholesale Dealers in

**Wines, Liquors and Cigars**

OF THE BEST BRANDS

9th STREET, - BRANDON

## Victoria Rice Mill

VICTORIA, B.C.

**CHINA and JAPAN RICE,**

**RICE FLOUR AND BREWERS' RICE.**

WHOLESALE TRADE ONLY

HALL ROSS & CO. - Agents

## BROWN BROS.,

Wholesale and Manufacturing

## STATIONERS,

64 to 68 KING STREET, EAST,  
TORONTO.

SPECIALTIES.

**Account Books Paper—all kinds  
Office Supplies Stationery  
Wallets, Pocket Books  
Ladies Hand Satchels  
Pocket and Office Dairies  
Leather Goods Binders' Materials  
Printers' Supplies**

## Stewart, Lewthwaite & Co.

WHOLESALE—

✱ **Comm'ssion and Fruit Merchants,**  
Butter, Cheese, Eggs, Flour,  
Grain, Fruit.

Consignments Solicited. . . . .

VANCOUVER, B. C.

## B. C. Milling & Feed Co.

MANUFACTURERS OF

**ROLLED OATS, OAT MEAL, GRAHAM FLOUR**  
Split Peas and all kinds of Chop Feeds.

**QUOTATIONS SOLICITED** for Barley, Oats,  
Wheat and Peas for milling and feed purposes in sack or  
bulk car load lots. **BATCHELOR & QUINE,**  
New Westminster Mills, B.C.

## MAJOR & ELDRIDGE,

COMMISSION MERCHANTS,

**Vancouver, - B.C.**

**Butter, Eggs, Cheese and Pork Products**  
**FRESH EGGS WANTED.**

Sole Agents for Vancouver, New Westminster and  
District for Leitch Bros. Celebrated Oak  
Lake Manitoba Flour.

## The Brackman & Kerr Milling Co.,

(LIMITED)

Oatmeal and Ground Feed Millers.

WHOLESALE DEALERS IN

**FLOUR, FEED, GRAIN AND PRODUCE.**

CORRESPONDENCE SOLICITED

**VICTORIA, - - B.C**

## J. & A. Clearihue,

COMMISSION MERCHANTS.

—DEALERS IN—

**FRUITS AND ALL KINDS OF PRODUCE.**  
Special attention to consignments of Furs and  
Skins, Butter and Eggs.

**Yates Street, VICTORIA, B.C.**  
P.O. BOX 536.

AGENTS Stedgate Oil Works, B.C.; D. Richards, Laundry Soap,  
Woodstock, Ontario; Teller, Bellwell Co., Montreal, Parisian  
Washing Blue.

We have a large cool warehouse with good facilities for handling  
Butter and Produce in quantities.

Consignments Received in all Lines. Correspondence  
Solicited.

## McMILLAN & HAMILTON,

COMMISSION MERCHANTS

—WHOLESALE DEALERS IN—

**BUTTER, EGGS, FRUITS AND PRODUCE**

A PERFECT SYSTEM OF

**COLD STORAGE.**

230 ABBOTT STREET, - VANCOUVER,

P.O. BOX NO. 296.

## S. A. D. BERTRAND,

OFFICIAL ASSIGNEE

For the province of Manitoba, under the recommend-  
ation of the Board of Trade of the city of Winnipeg.  
Insolvent and Trust Estates Managed with Promptness  
and Economy.

Special attention to Confidential Business Enquiries.

Corner 2nd Avenue and 2nd St. North,  
WINNIPEG, MAN.