

The London Machine Tool Co., LONDON, ONT.

MANUFACTURERS OF GENERAL MACHINERY....

Having recently sold our patterns and plant to the A. R. Williams Co., of Toronto, retaining only such machines as are useful in our business, we beg to say that we are rapidly putting in New Machinery, from new and improved designs, and are now in a position to receive orders for all Standard Tools for Metal Working in all branches. It will be our aim, by personal supervision of the product of works, with export men of large experience at the head of each department, to turn out nothing but first-class work at moderate prices. And as we intend to deal directly with the manufacturers, they will be enabled to get their machinery at first cost.

As we shall not be able to personally visit each manufacturer, it is for this purpose that we publish this advertisement. This is our agent who is going about to solicit a share of your patronage. We are thankful for the patronage extended to us in the past, and hope that we may secure an extension of the favors for the future.

All correspondence relating to the following Tools will be promptly answered, viz:

LATHES - Engine, Gap, Break, Turret, Fox, Spinning, Etc.
PLANERS - Standard, Crank, Plato, Etc.
DRILLS - Standard, Sensitive, Multiple, Radial, Etc.
MILLING MACHINES - Lincoln, Plain, Universal, Etc.

SHAPING MACHINES - Whitworth, G. & E., Rack-Driven, Etc.
HAMMERS - Steam, Sandage Drop, Stiles Drop.

BULL-DOZERS for all purposes.
PUNCHES AND SHEARS for Plato, Angles, Channels, Gauges, Etc.
PRESSES for Cutting, Stamping, Drawing

Wiring, Riveting, Etc. We shall also esteem it a pleasure to give quotations on Special and General Machinery in our line.

LONDON MACHINE TOOL CO.

JOHN J. KELLER & CO.

104 and 106 MURRAY ST.
 NEW YORK

220 Church St., Philadelphia.

135 Pearl Street, Boston.

**Aniline Colors,
 Dyewood Extracts,
 Sumac and
 Nutgall Extracts.**

FAST COLORS for Wool Dyeing,
 One Dip Cotton Colors, Novelties
 and Specialties for Calico
 Printing.

MANUFACTURED BY

JOHN R. GEIGY & CO.
 BASLE, SWITZERLAND

**LIGHT YOUR
 FACTORY WITH**

LUXFER PRISMS

The latest device for

LIGHTING

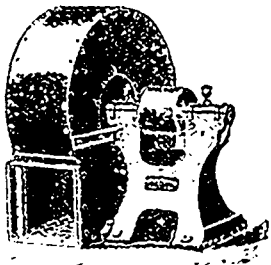
dark rooms and
 offices

By Daylight

For catalogue
 and estimates
 write to

**Luxfer Prism
 Co'y, Limited.**

58 Yonge Street, - TORONTO.



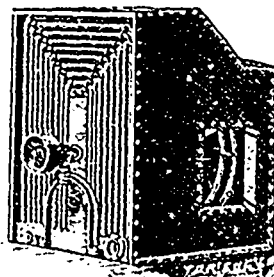
Ventilating Steel-Plate Fans, Blowers and Exhausters.

WE have on hand Fans of the Best American Makes, ranging from 15 inch to 72 inch. Also Second-hand Coil Heaters, with Fans to suit, from 1,000 feet to 5,000 feet of inch pipe capacity.

THE ABOVE ARE FOR SALE CHEAP.

Write for Prices and Send for Catalogue.

**McEachren Heating and
 Ventilating Co., GALT, ONT.**



by fire in 1895, the erection of the present extensive factory was immediately begun and will cost, when finished, fully \$125,000. Excellent railway facilities, with sidings to storehouses and coke sheds, are furnished by the Grand Trunk Railway Company. About seven carloads of Pennsylvania coke per week are consumed in the manufacture of the cement.

Prevailing prices are \$1.90 in jute sacks and \$2.10 in barrels, per barrel of 350 pounds, net.

The business card of the company above alluded to is to be found in page 2 of this journal.

NEW DYESTUFFS.

New Patent Blue B, and New Patent Blue 4 B.—These are two recent additions to the ever growing list of level dyeing wool colors. The shade of the B brand lies between a green and a blue (and as may be seen by pattern card No. 678), closely resembles the well known color fast green extra bluish, but is considerably brighter in shade. The 4 B brand dyes a very clear and pronounced blue. Both dyestuffs are homogeneous products, and are equally as fast to light as the fast greens, also fast to alkalies and sufficiently so to acids. Their fastness to washing and milling is satisfactory for goods not heavily milled; when dyed on a chrome mordant their fastness to milling is increased. They also stand stoving well. On account of their level dyeing properties, they are very suitable for dyeing ladies dress goods, and fine yarns, as well as billiard cloths, etc. Bright navy blue shades are obtainable by mixing new patent blue with azo fuchsin or fast acid magenta B. These colors can further be used to advantage in dyeing silk, leather, feathers paper, and for the manufacture of ink.

Directions for dyeing on wool. Dye one hour boiling with the addition of twenty glauher salt, two per cent. sulphuric acid.

Samples and pattern cards mailed gratis on application to the Dominion Dyewood and Chemical Co., Toronto, sole agents in Canada for the Farbenfabriken, vorm Friedr Bayer & Co., Elberfeld, Germany.

Alizarine Sapphirole B.—The Farbenfabriken of Elberfeld have just prepared a neat pattern card of the above new product in conjunction with indigo carmine, and so conveniently arranged for exposure to light by customers who will then be convinced of the high degree of fastness to light of alizarine sapphirole B as compared to indigo carmine. The latter has served, up to the present as the standard of blue level dyeing colors. When exposing this card to sunlight it is advisable to examine it every few days to determine correctly to what extent the sun has acted upon the dyed patterns. It will be noticed that indigo carmine has faded long before any change is found in the alizarine sapphirole.

NEWFOUNDLAND MINES.

Newfoundland is already attracting considerable attention on the part of capitalists as a field for profitable mining investment, and those who should know predict great things for the future.

When R. G. Reid, of Montreal, undertook to build the railway from Port au Basque to St. John's for a land subsidy, he was ridiculed by many in Canada, but Mr. Reid is a shrewd business man and knew what he was about. He is now, probably, the largest landed proprietor in the world, and