

## Points in Dark Brahma :

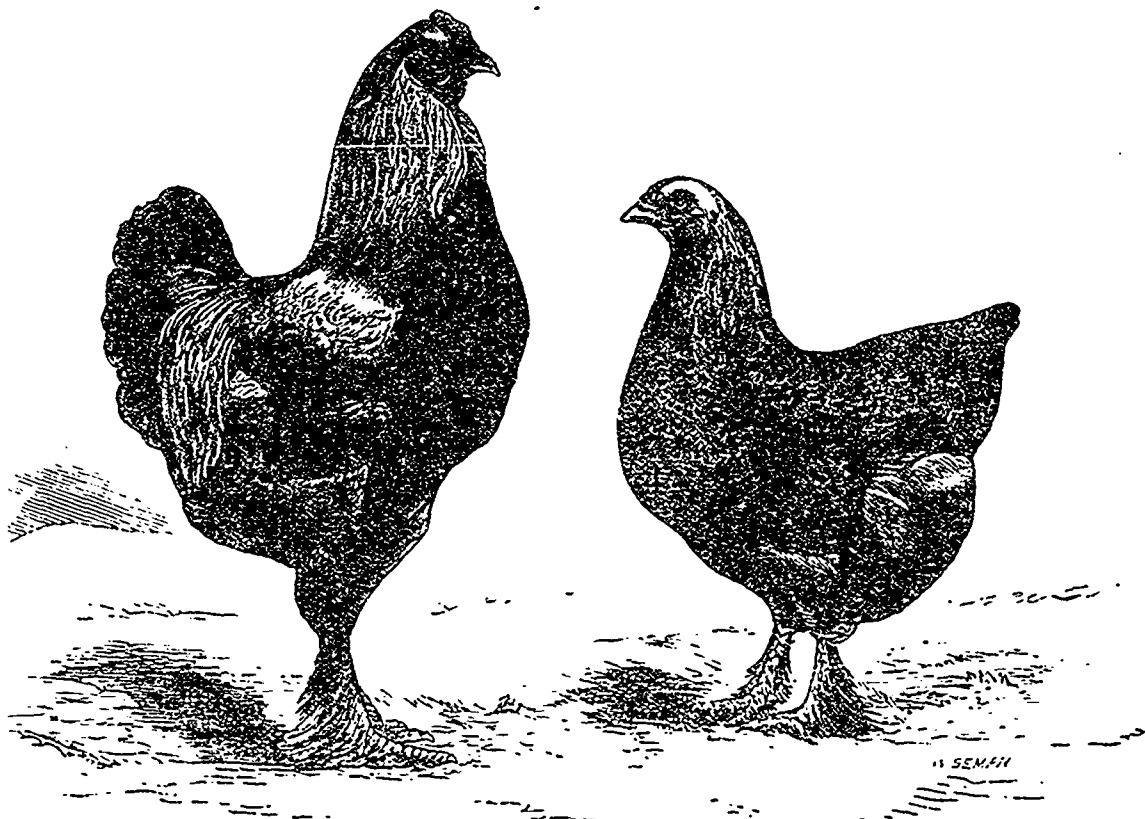
Symmetry.....	10
Size and Weight ..	13
Condition .....	8
Head .....	5
Comb .....	8
Ear-lobes and Wattles...	5
Neck.....	8
Back.....	7
Breast and body .....	10
Wings.....	8
Tail .....	6
Fluff.....	5
Legs and Toes .....	7

100

Comparison in size and weight, 2 points to the pound.

## PEDIGREE BREEDING.

In previous remarks on this subject we have hinted that animals or fowls *can* be bred so as to produce their like with a certainty beginners have little idea of in many cases, while in others they absurdly underrate the difficulty of it. We pointed out that the means to this certainty were to accumulate into the desired direction all the tendencies to transmission of many generations, and never losing any step gained by going off into some other direction or after some other point (which we saw to be the common practice), inasmuch as such a course must undo a great deal of whatever had been done, though not necessarily undo all. But the difficulty we have now to consider is, how to harmonise the claims of various points or properties with this principle, so as eventually to obtain them all, and especially so as to avoid those evils of in-breeding to which we referred a week ago.



Dark Brahmas.

In attempting a few remarks which may be of assistance to others in these respects, we shall base them upon our actual experience with the Dark Brahmas. As we stated at the outset, we believe the same principles will hold good in other departments; but we desire to proceed upon safe ground, and therefore give our conclusions simply as those we have reached by experience, or rather, perhaps, *tested* them thus; since we had reached them beforehand by the considerations already presented, and others of a kindred character. We believed we should find them sound, and we did so; and it is hardly too much to say that the blood of the strain, formed in the manner we shall indicate, now runs in the veins of nearly every winning bird of the present day.

We began, then, after having for a year or two wasted time in proceedings of a by no means satisfactory character,

to consider the various points of the fowl, and what experience had taught us was the comparative difficulty in attaining them. The first thing to appear was, that the plumage of the Dark Brahma varied more than that of many other breeds in the different sexes, that of the hen being far more difficult to obtain good than that of the cock. We fastened our attention therefore, chiefly upon the hen to begin with; just as in another breed, for the very same reasons, we might, on the contrary first consider the cock. In the hen we found that the grand difficulty was to get and to keep good pencilling, especially *up the breast* and under the throat; while the second most difficult point was the comb; third, the size; and afterwards, shape and leg feather. These last are, in this breed at least, most easily modified by a single cross; so that, for instance, even almost bare legs will produce grandly-