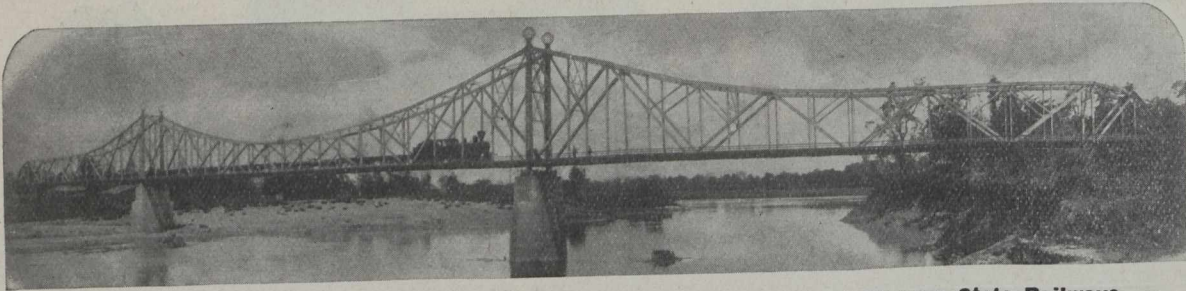


# Cleveland Bridge<sup>a</sup><sub>n</sub><sup>d</sup> Engineering Company, Limited.

DARLINGTON  
ENGLAND



Bridge over the River Menam designed and constructed for the Royal Siamese State Railways.

*Specialists in the Design, Manufacture and Erection of Bridges and all classes of Iron and Steel Structural Work.*

CANADIAN OFFICE

Canadian Express Building

MONTREAL, QUE.

Montreal  
Toronto  
St. John, N.B.  
Winnipeg  
Calgary  
Edmonton and  
Vancouver

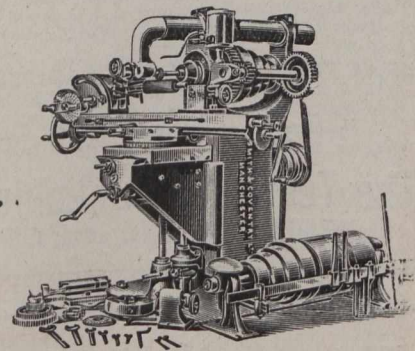
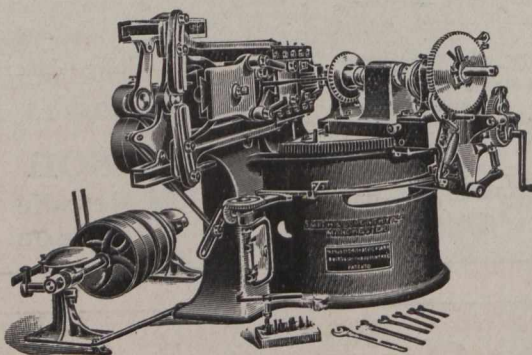
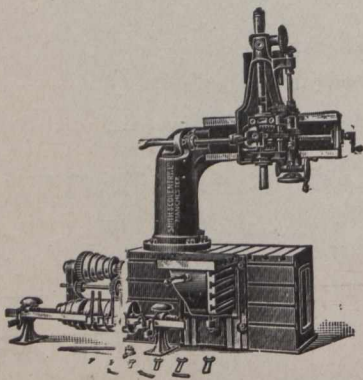
## The J. C. McLAREN BELTING CO., LIMITED

Manufacturers and Dealers in

**Belting, Card Clothing, and  
Mill Supplies.**

# SMITH & COVENTRY, LTD.

MANCHESTER, - - ENGLAND.



**MILLING MACHINES**

**BEVEL WHEEL PLANERS**

**DRILLING & TAPPING MACHINES**

**BRASS FINISHERS' LATHES**

**KEY SEATING MACHINES**

**BORING MILLS, PLANERS, SLOTTERS.**

Sole Canadian  
Representatives,

**PEACOCK BROTHERS,** 68 BEAVER HALL HILL,  
MONTREAL.