

DOMINION LINE

MONTREAL TO LIVERPOOL

S.S. Laurentic, June 11th	S.S. Canada, June 18th
S.S. Megantic June 25th	S.S. Dominion, July 2nd
S.S. Laurentic, July 9th	

(All above Steamers carry passengers)

Favorite steamers for all kinds of perishable cargo, having fan ventilation, cold storage and cool air chambers.

MONTREAL TO BRISTOL

S.S. Welshman, June 11th	S.S. Cornishman, June 25th
S.S. Manxman, July 2nd	

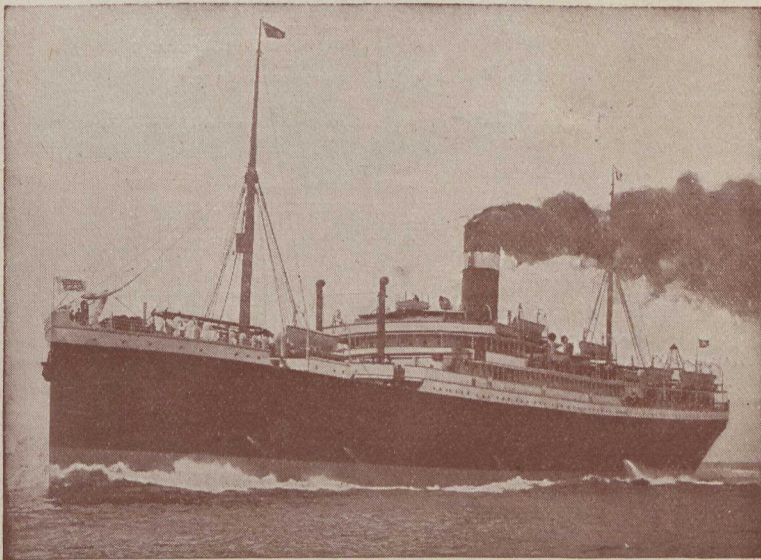
DOMINION LINE

M. A. OVEREND }
J. W. WILKINSON } Travelling Freight Agents

MONTREAL OFFICE, 118 Notre Dame St. W.
PORTLAND OFFICE, - - - 1 India St.

GEORGE W. TORRANCE, Freight Agent,
28 Wellington St. E., TORONTO

Mention The Canadian Horticulturist when writing.



ALLAN LINE

ROYAL MAIL



WEEKLY SERVICES

VIA

The St. Lawrence Route

30-STEAMSHIPS-30
(176,000 TONS)

The First Transatlantic Line to adopt Turbine Engines.

SAILINGS AS UNDER:

FRIDAYS FOR	LIVERPOOL
SATURDAYS FOR	GLASGOW
SATURDAYS FOR	LONDON and HAVRE

THE ALLAN LINE

Has Spared No Expense in Equipping Cold Storage, Cool Air and Ventilated Chambers, for the carriage of Fruits, Meats, Butter, Cheese and other Perishables.

VIRGINIAN	} Triple Screw	GRAMPIAN	} Twin Screw
VICTORIAN		Turbine Engines	
TUNISIAN	} Twin Screw	IONIAN	
CORSICAN			

And 23 Other Ships

For Full Particulars apply to

The ALLAN Line, 77 Yonge St., Toronto