

PAN-AMERICAN HORTICULTURE—III.

GENERAL REMARKS. — Ontario visitors have been slow in making their first visit to this great exposition, which is strange considering how near their very doors lies this marvellous production of science and art. Now that the fruit exhibit is at its height, there is no reason why the five or six thousand readers of this journal should delay any longer, and one visit will only create an appetite for several more.

Our excursion trains usually land us near the northern side of the grounds, and we enter at once through the beautiful Propylæa, upon a wonderful architectural display. To the left as we enter upon the Plaza is the grand corridor filled with most excellent models of Grecian statuary, and directly before you the Electric Tower, designed as the grand centre piece of the magnificent group of buildings.

Passing this you are in the Esplanade where a hundred thousand people can be comfortably seated to watch the electrical illuminations at night.

Here you are in the midst of the grandest architectural display ever grouped together in the history of the world, simply passing all description. We show simply one of these structures, the Temple of Music, a place for thousands to rest and refresh themselves with sweet music of the first order.

But properly you should enter through the Park gates at the south, and approach the elegant park, with its spacious avenues, its stately towers, its beautiful lake with Casino and boat house, whence you may take a most delightful tour in electric launch about the grounds, a special treat when you are tired.

To the horticulturist this end of the grounds is especially attractive on account

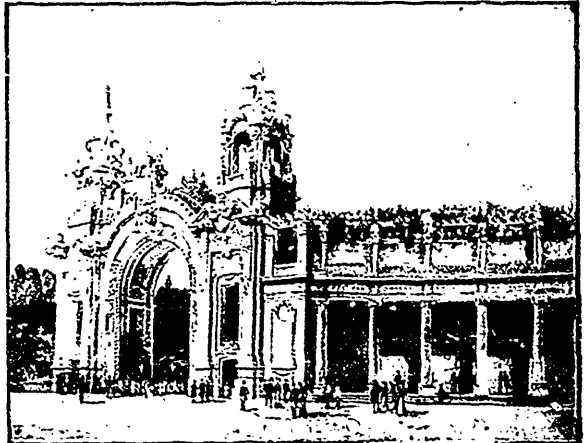


FIG. 2139. PROPYLÆA.

The illustration herewith shows the western end of the Propylæa. This is an architectural ornament of very beautiful and imposing design. It marks the northern boundary of the Plaza, and is designed as a screen, separating the Exposition from the noise and smoke incident to the traffic of steam railways which pass the Exposition grounds upon the northern side. The Propylæa is 500 feet long with a massive towered entrance at each end.



FIG. 2140. THE PLAZA.

The Plaza is an open space immediately north of the Electric Tower, and is 350 feet by 500 feet. On the east side is the large entrance building of the Stadium, and on the north the Propylæa, a section of which is shown in the illustration. On the west is the building for restaurant purposes forming also the eastern entrance to the Midway. The Midway is three-fifths of a mile long, giving more than a mile frontage and presenting the most interesting and wonderful collection of entertainment novelties ever brought together. There will be about thirty-five separate and distinct features, some of them very large, occupying several acres. The aggregate cost of the Midway attractions is estimated at \$3,000,000, which alone is more than the cost of some of the large expositions.