

INCORPORATED TORONTO SINCE A. BOYD
1886. PRESIDENT.

CONSERVATORY

OF MUSIC
COLLEGE STREET.
EDWARD FISHER, Mus. Doc.,
Musical Director.

Fall Term Opens Tuesday, Sept. 5th
Students should register if possible previous week
SEND FOR NEW CALENDAR.

SCHOOL OF EXPRESSION, F. H. Kirkpatrick, Ph. B.,
Principal.
SPECIAL CALENDAR.

MEMORIALS AND DOMESTIC GLASS
DOMINION STAINED GLASS
For C. O. S. Sibel
34 RICHMOND ST. E. TORONTO.
+ FINNEY & P. Smith Proprietors

Church & Memorial
Windows
STAINED GLASS
DESIGNS
ESTIMATES
SUBMITTED
LUXFER PRISM
100 King St. W. Toronto

STAINED GLASS
MEMORIAL
WINDOWS
BRASSES AND
DECORATIONS
CASTLE & SON,
2446 St. Catherine
Street, - Montreal.

Established 28th 1884. Telephone Main 1137.

COPELAND & FAIRBAIRN
House and Land
Agents,
24 Victoria Street, - Toronto,
MONEY TO LEND.
Night Telephone, North 2362.

The Alexander Engraving Co.
(Successors to Moore & Alexander.)
16 Adelaide Street West, Toronto.
Half-tone Engravings, Zinc Etch-
ings, Wood Cuts, Designing and
Commercial Photography.
Our Outs give Satisfaction. Samples on Application
Phone Main 2158.

BEST QUALITY Coal and Wood
OFFICES:
3 King St. East
415 Yonge Street
793 Yonge Street
576 Queen St. W.
1368 Queen St. W.
415 Spadina Ave.
306 Queen St. East
204 Wellesley St.
Esplanade East,
near Berkeley St.
Esplanade East,
foot of Church St.
Bathurst Street,
opposite Front St.
Pape Avenue—at G. I. R. Crossing. Yonge Street
—at C. P. R. Crossing. Lansdowne Avenue—near
Dundas Street. Corner Dufferin and Bloor Streets.

THE ELIAS ROGERS Co., Limited.

When writing to or
purchasing from
Advertisers mention
The Canadian
Churchman



"Glen Manor"
RESIDENTIAL AND DAY SCHOOL
FOR GIRLS
651 SPADINA AVENUE, TORONTO
Thorough English Course. Individual Atten-
tion. Pupils prepared for the Universities
and for Examinations in Music and Art.
Large staff of Resident and Visiting Teachers.
MISS VEALS, Lady Principal.

**School of the Sisters of the
Church,** 106 Beverley Street,
TORONTO, Ont
Boarding and Day School for Girls.
Visitor, The Lord Bishop of Toronto.
Terms Moderate. Vacancies for Boarders.
SCHOOL RE-OPENS MONDAY, SEPT. 11th, 1905.
ADDRESS, - SISTER IN CHARGE.

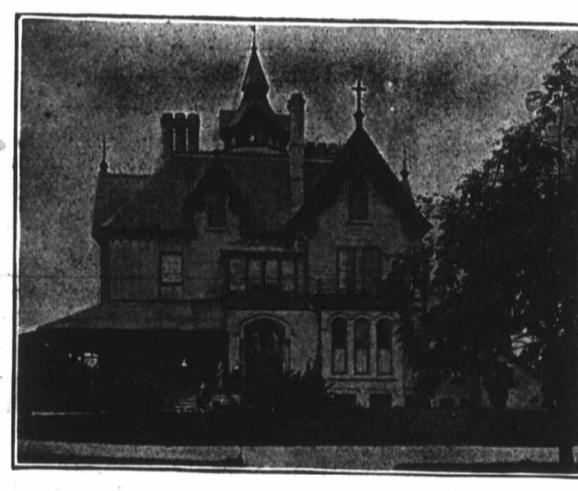
WESTBOURNE School for Girls
340 Bloor Street W., - TORONTO, Can.
Re-opens September 11th, 1905.

A Residential and Day School, well appointed, well
managed and convenient. Specialists in each de-
partment. Affiliated with the Toronto Conservatory
of Music. Dr. Edwies Fisher, Musical Director;
F. McGillivray Knowles, R.C.A., Art Director. For
announcement and information, address the principals,
MISS M. CURETTE, B.A.
MISS F. E. DALLAS, Mus. Bach.

When Writing to
Advertisers Please
Mention The Can-
adian Churchman.

ST. ALBAN'S CATHEDRAL SCHOOL
Howland Avenue, Toronto.
Boys Prepared for Honor Matriculation.
Reopens for BOARDERS and DAY Boys,
September 14th. For Prospectus
Apply, M. E. MATTHEWS, Principal.

DUNHAM LADIES' COLLEGE,
DUNHAM, - QUE.
Montreal Diocesan Church School for Girls.
For Calendar, apply to the Lady Principal.



**Bishop
Bethune
College,**
OSHAWA, Ontario.
Visitor, the Lord Bishop of
Toronto.
Preparation for the
University.
Young Children also Received.
For terms and particulars
apply to the SISTER IN
CHARGE, or to
The Sisters of St. John
the Divine,
Major Street, Toronto.

NOVEMBER

- Gregg and Pitman Shorthand.
- Double Entry Bookkeeping.
- Chartered Accountancy.
- Business English.
- Bankers' Exams.
- Teachers' Business Training.

BRITISH AMERICAN College

- 45 years' success.
- 6,000 Graduates.
- Situations secured.

Get illustrated catalogue NOW.
R. A. FARQUHARSON, B. A.,
Corner McGill and Yonge Streets
Toronto, Ont.

Edgehill, Church School
for Girls
WINDSOR, NOVA SCOTIA

INCORPORATED 1891.
The Bishop of Nova Scotia, Chairman Board of
Trustees. The Bishop of Fredericton, member
of Board of Trustees, ex-officio.

Lady Principal, Miss Gena Smith, (late Lady Prin-
cipal of King's Hall, Compton, P. Q.), formerly
Headmistress of St. Stephen's High School, Windsor,
England, assisted by Eleven Resident Experienced
Governesses from England, (five of whom are special-
ists in the Music and Art Departments). House-
keeper, Matron and Nurse.

Extensive buildings, with capacity for 100 Resi-
dents; Heated by Hot Water, Lighted by Electricity,
Grounds covering eight acres, with Lawns for Tennis,
Croquet, Basket Ball, Hockey, &c. School Dairy and
Laundry. Preparation for the Universities.
For Calendar apply to DR. HIND.

CHURCH DAY SCHOOL
Major Street, Toronto
SISTERS S. JOHN THE DIVINE
KINDERGARTEN and
ELEMENTARY DEPARTMENT

HIGHER EDUCATION FOR GIRLS
**THE BISHOP STRACHAN
SCHOOL**
(Thirty-ninth Year)
PRESIDENT the Lord Bishop of Toronto.
Wykeham Hall, College Street, Toronto.
Full Matriculation course also
Elementary work.
For Calendar apply to
MISS ACRES, Lady Principal.

Ridley College, St. Catharines, Ont.
Residential School for Boys.
Lower school for boys under fourteen; completely
separate and limited in number.
Upper school prepares boys for the universities,
professions and for business. Most careful over-
sight. Health conditions unequalled.
REV. J. O. MILLER, M.A., D.C.L.,
Principal.

CROWN ART
Stained Glass Co., Limited
Memorial Windows
and Art Stained Glass

For Churches, Public Buildings, and Dwellings.
GLASS TILING A SPECIALTY.
96-98 Adelaide St. E., Toronto.
Phone Main 5006

CITY SEATING
FURNITURE
FOR CHURCH & SUNDAY
SCHOOL
DUNDAS ONT.

JONES AND WILLIS
Church Furniture Manufacturers
Metal, Wood, Stone
and Textile Fabrics.
STAINED GLASS ARTISTS.

48 Great Russell Street, LONDON, ENG.
Opposite British Museum.
Also at Birmingham and Liverpool.



ST. AGNES' SCHOOL.
A Church School for Girls,
ELMPOOL, BELLEVILLE, ONTARIO.
Patron—The Lord Bishop of Ontario.

Thorough Courses in English, Languages,
Music, Art and Physical Culture.
Conservatory of Music Examinations held
at the School.
Pupils taken from the Kindergarten to Pre-
paration for the Universities.
The success of the School has justified a
large addition to the building, containing six
Class Rooms, Piano Rooms, Gymnasium,
Swimming Bath and Sleeping Apartments.
The building is heated by steam and lighted
by gas and electricity.
The grounds extend over five acres.
For Prospectus and further information
apply to
MISS F. E. CARROLL,
Lady Principal.

Trinity College School
PORT HOPE, Ont.
Next Term begins
September 12th.

For Calendar and all particulars apply to
Rev. OSWALD RIGBY, M.A., LL.D., Headmaster

Memorial Windows
Our Specialty.
The N. T. LYON GLASS CO., Ltd.,
147-3 CHURCH ST., - TORONTO.

**Harrington's
TUBULAR Chime Bells.**
Lighter in Weight, Sweeter in Tone,
Cheaper in Price than the ordinary bell,
COVENTRY, - ENGLAND.

CASTLE & SON, Agents,
2446 St. Catherine Street, Montreal.

CHURCH BRASS WORK
Eagle and Rail Lecterns, Altar Vases, Ewers, Candi-
sticks, Altar Desks, Crosses, Vesper Lights, Altar
Rails, Etc. Chandelier and Gas Fixtures.
CHADWICK BROTHERS
(Successors to J. A. Chadwick)
MANUFACTURERS
182 to 190 King William St. HAMILTON, Ont.

**Church
Brass Work**
MEMORIAL
BRASSES,
RAILS, VASES.
PRITCHARD ANDREWS
CO. OF OTTAWA, LIMITED
133 Sparks St. OTTAWA.