

CANADIAN PACIFIC

Trains to Muskoka

Start Saturday, June 22nd

"LAKELAND LIMITED"

Fast express, daily except Sunday. Leaves Toronto at 11.30 a. m., arriving at Bala 3.00 p. m. Parlor cars, dining car and coaches.

Connects at Bala with Muskoka Navigation Co.'s steamers for all points on Muskoka Lakes.

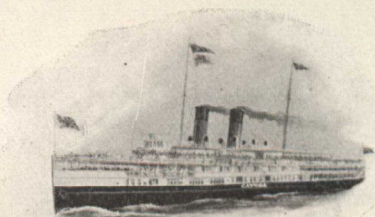
LOCAL EXPRESS leaves Toronto at 9.00 a. m., daily except Sunday, arrives Bala 1.17 p. m.

LOCAL EXPRESS leaves Toronto 4.50 p. m., daily except Sunday, arrives Bala 9.10 p. m.

Starting June 29, the "Sunrise Express" will also run, leaving Toronto 2.30 a. m., daily except Monday (passengers can board sleeper at 10.00 p. m.) arriving Bala 6.10 a. m. Through sleepers Pittsburg, Buffalo and Toronto to Bala. EQUALLY GOOD SERVICE SOUTHBOUND.

C. B. FOSTER, District Passenger Agent, C.P.R., TORONTO

Niagara Navigation Co. (Limited)



CONNECTING

TORONTO — NIAGARA FALLS — BUFFALO

6 trips daily (except Sunday). Write for Illustrated Booklet.

B. W. FOLGER, Manager, TORONTO, CANADA



'Highlands' of Ontario"

The ideal Summer Resort region of America, including the following fascinating districts:

MUSKOKA LAKES

LAKE SIMCOE AND COUCHICHING

LAKE OF BAYS

MAGANETAWAN RIVER

TEMAGAMI

LAKE NIPISSING AND FRENCH RIVER

30,000 ISLANDS GEORGIAN BAY

ALGONQUIN PARK

KAWARTHA LAKES, Etc.

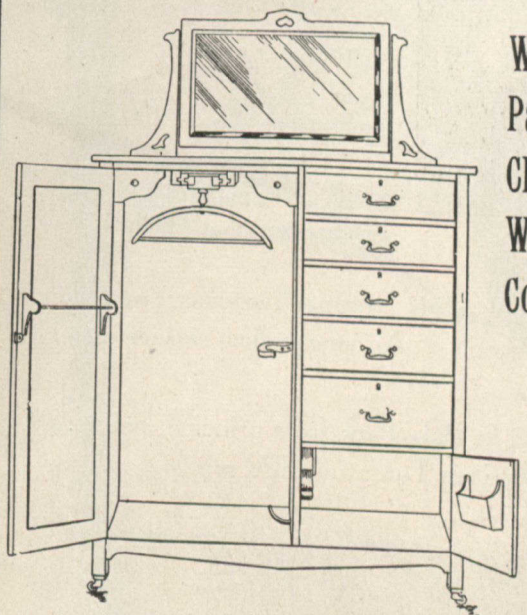
40,000 SQUARE MILES of
lake, river and island scenery.

1,000 to 2,000 feet above sea level. Fishing—Shooting—Canoeing—Camping. PERFECT IMMUNITY FROM HAY FEVER. Splendid train service to all districts via GRAND TRUNK RAILWAY SYSTEM.

Booklets descriptive of any of the above districts free on application to J. D. McDONALD, District Passenger Agent, Toronto, Ontario.

W. E. DAVIS
Passenger Traffic Manager
MONTREAL

G. T. BELL
Gen. Pass. and Ticket Agent
MONTREAL



Weir
Patent
Chiffonier
Wardrobe
Combination

Fitted With
Extension
Slide and
Snit
Hangers

Showing Interior of Wardrobe Combination No. 135

Price in Birch Mahogany Finish or Surface

Oak \$35.00, with Wooden Panel in Door.

\$40.00 with Bevel Plate Glass Mirror in Door.

The above is only one of 20 different styles we make for men's or women's use, and sell direct to the individuals, thereby saving the middleman's profit. Write for Catalogue.

Wardrobes on exhibition at the Cranston Novelty Company's Showrooms, Stair Building, 123 Bay Street, Toronto, Ont.

Weir Wardrobe Co. of Canada LIMITED

MOUNT FOREST, ONTARIO

Electrical Heating Devices FOR THE HOUSEHOLD

RELIABILITY AND ECONOMY



3-pound Flat Iron for
Sewing Room or Nursery

The heating and cooking appliances designed and manufactured by the Canadian General Electric Company mark a new epoch in domestic science in that they employ electricity to generate heat with absolute reliability and (when properly used) with excellent economy. They are SAFE even in the hands of the unskillful, and are practically INDESTRUCTIBLE.

Serviceability has been a SINE QUA NON in the design of these appliances, and they may be expected to withstand about the same treatment that ordinary household utensils receive. They will not "burn out" when the current is thoughtlessly left "on," although such practise is, of course, not recommended. The dishes are made without solder, and the heating unit has remarkably LONG LIFE.



6-inch Stove

The Canadian General
Electric Co'y, Limited

14-16 East King Street, TORONTO, Ont.