

FOR SALE

FIRE BOX BOILERS

- 1, refitted 40" x 16', containing 43-2½" tubes.
- 1, refitted 36" x 13', containing 44-2½" tubes.
- 1, refitted 36" x 12' 10", containing 43-2½" tubes.

HORIZONTAL BOILERS

- 1, new 72" x 13' 9", containing 88-3½" tubes.
- 1, new 72" x 12' 6", containing 88-3½" tubes.
- 1, refitted 60" x 13' 6", containing 72-3" tubes.
- 1, refitted 54" x 14', containing 70-3" tubes.
- 1, refitted 54" x 12', containing 65-3" tubes.
- 1, refitted 48" x 15', containing 54-3" tubes.

AUTOMATIC ENGINES

- 1, refitted 12" and 24" x 30", R. H. Corliss, tandem.
- 1, refitted 12" x 30", R. or L. H. Corliss.
- 1, refitted 9" and 16" x 12", C. C. Ball, tandem.
- 1, refitted 10" x 10", C. C. Ideal.
- 1, new 10" x 15", R. H. Jewel.
- 1, refitted 10" x 24", L. H. Brown.
- 1, refitted 9" x 24", L. H. Brown.
- 1, refitted 8" x 24", R. H. Brown.
- 1, new 4½" x 6", R. H. Jewel.

HORIZONTAL ENGINES

- 1, refitted 11¼" x 14" L. H. slide valve.
- 1, new 12" x 15", C. C. slide valve.
- 1, nearly new 12" x 12", C. C. slide valve.
- 1, new 11" x 15", C. C. slide valve.
- 1, nearly new 10" x 15", C. C. slide valve.
- 1, refitted 8¼" x 9", R. H. slide valve.

PORTABLE ENGINES AND BOILERS

- 1, refitted 10" x 11" portable engine and boiler.
- 1, refitted 9½" x 11", portable engine and boiler.
- 1, refitted 9" x 12", portable engine and boiler.
- 1, refitted 8" x 12", semiportable engine and boiler.
- 2, refitted 7" x 10", portable engines and boilers.

DUPLEX STEAM PUMPS

- 1, new 12" and 18½" x 10½" x 12", compound 1,000,000 gallons per day.
- 1, new 10" x 6" x 12", 325 gallons per minute.
- 1, refitted 10" x 6" x 12", 294 gallons per minute.
- 2, new 8" x 5" x 12", 224 gallons per minute.
- 1, refitted 7½" x 6" x 10", 245 gallons per minute.
- 1, refitted 7½" x 4½" x 10", 172 gallons per minute.
- 1, refitted 7" x 4" x 7", 125 gallons per minute.
- 3, new 6" x 4" x 7", 114 gallons per minute.
- 1, new 6" x 3½" x 6", 90 gallons per minute.
- 2, new 5½" x 3" x 5", 100 gallons per minute.
- 3, refitted 4½" x 2½" x 4", 40 gallons per minute.
- 12, new 3" x 2" x 3", 20 gallons per minute.

Contractors' machinery for rental reasonable terms

H. W. PETRIE, Ltd.
Toronto Montreal Vancouver

Jardine Universal Clamp Ratchet Drill

Indispensable for Machine Repairs, Factories, Machine Shops, Bridge Builders, Track Layers, Structural Metal Workers, have use for it. Send for description.

A. B. JARDINE CO., Hespeler, Ont.

RAILS For Sidings, Tramways, etc. 12 to 80 lbs. per yard.

New and Second-hand. Rails cut to specification for any purpose.

JOHN J. GARTSHORE
58 Front Street, West - Toronto

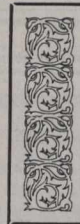
FOR SALE CEDAR POLES

from British Columbia.

Three large yards filled with seasoned stock ready to ship.

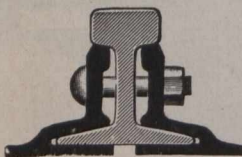
Address **THE LINDSLEY BROS. CO.**
SPOKANE - - - WASH.

The Canadian Engineer



Reaches weekly the LEADING Civil, Mechanical, Railroad, Municipal and Provincial Works, Engineers and Engineering Contractors in ALL parts of Canada and United States and Europe.

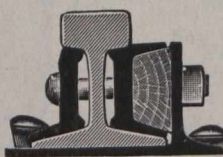
All Its Readers Are Buyers



CONTINUOUS JOINT

Over 50,000 miles in use.

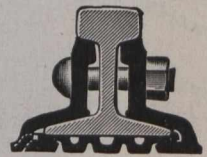
The Rail Joint Co. of Canada, Limited
Board of Trade - Montreal



WEBER JOINT

Rolled from Best Quality Steel.

Makers of Base Supported Rail Joints for Standard and Special Rail Sections, also Girder, Step or Compromise, Frog and Switch, and Insulating Rail Joints, protected by patents



WOLHAUPTER JOINT

S. S. SELMAN, President

A. G. MCGREGOR, Managing Director



MANUFACTURERS OF

GALVANIZED WIRE WOUND and Continuous Stave WOODEN PIPE

FOR WATERWORKS SYSTEMS

No frost breaks, no corrosion. Its carrying capacity never decreases.