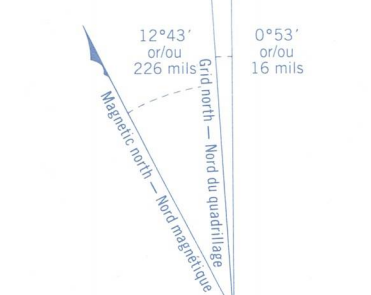
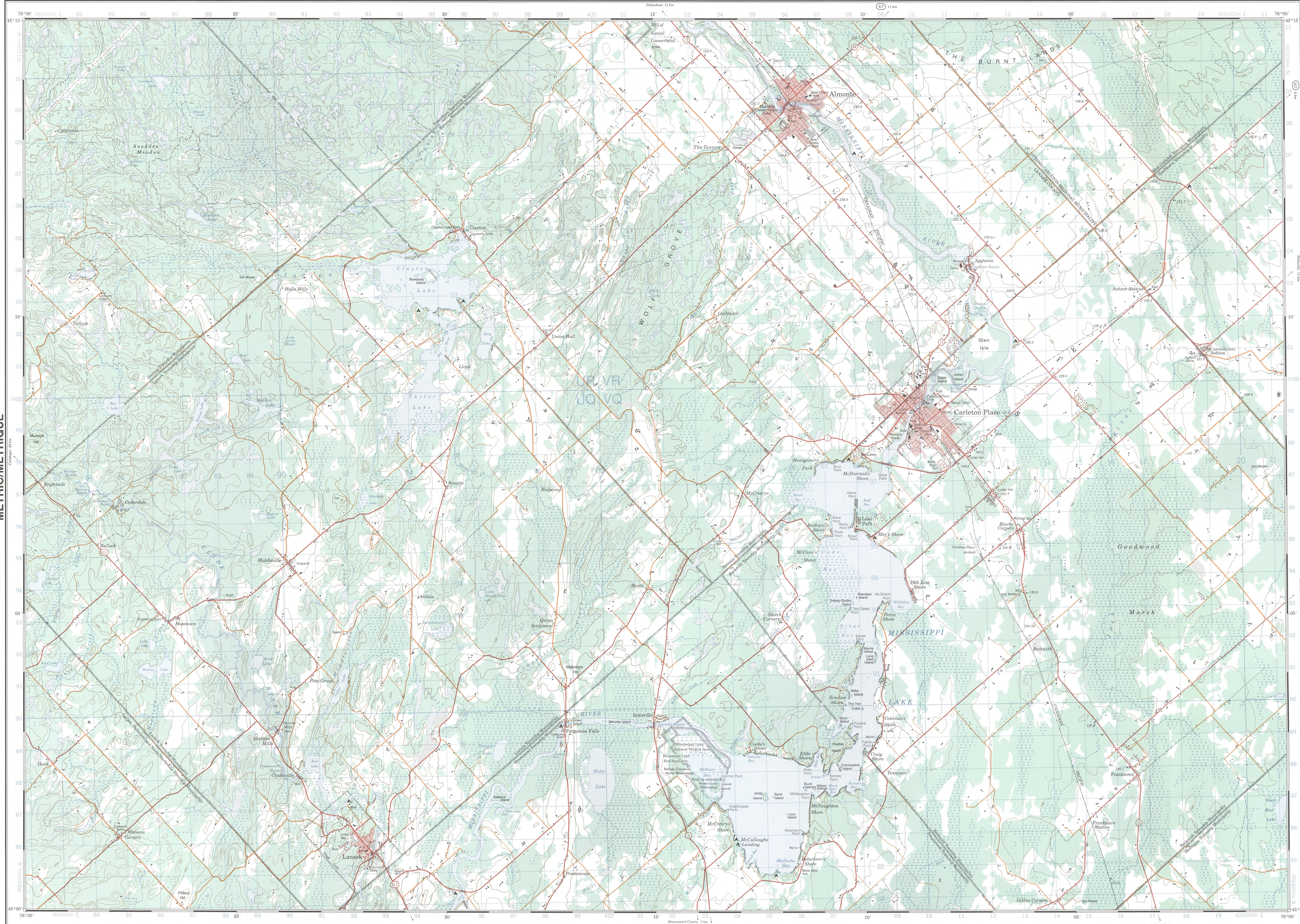


METRIC/MÉTRIQUE

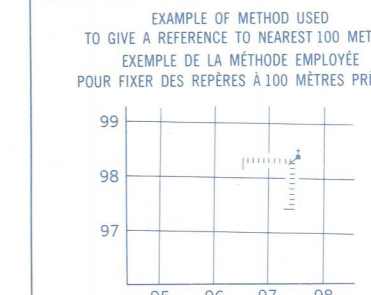
METRIC/MÉTRIQUE



Use diagram only to obtain numerical values APPROXIMATELY MEAN ELEVATION 1981 FOR CENTRE OF MAP Annual change remaining 2.3

Utiliser le diagramme pour obtenir les valeurs numériques APPROXIMATIVEMENT AU CENTRE DE LA CARTE EN 1981 Tendance annuelle résiduelle 2.3

ONE THOUSAND METRE UNIVERSAL TRANSVERSE MERCATOR GRID. Table with columns for UTM and MGRS coordinates.



EXAMPLE OF METRIC USAGE. TO USE: 1. REFER TO NEAREST 100 METRES... REFERENCE POINT CHURCH - EGLISE... EASTING: Road number on grid line immediately to left of point... NORTHING: Road number on grid line immediately below point...

Table showing the relationship between UTM and MGRS coordinates for the Carleton Place area.

PRODUCED BY THE CANADA CENTRE FOR MAPPING... DEPARTMENT OF ENERGY, MINES AND RESOURCES... INFORMATION CONCERNING BEST MAPS AND TERRAIN SURVEY MEASUREMENTS CAN BE OBTAINED FROM... METRIC/MÉTRIQUE

CARLTON PLACE ONTARIO. Scale 1:50 000 Échelle. Conversion scale for elevations. METRES ABOVE MEAN SEA LEVEL. ELEVATIONS IN METRES ABOVE MEAN SEA LEVEL.

ÉTABLI PAR LE CENTRE CANADIEN DE CARTOGRAPHIE... ÉCHELLE DE CONVERSION DES ALTITUDES. ÉQUIVALENCE DES COURSES 10 MÈTRES. ALTITUDES EN MÈTRES.

CARLTON PLACE 31 F/1. Energy, Mines and Resources Canada. Énergie, Mines et Ressources Canada.