

NANAIMO CITY.

THE CENTRE OF THE GREAT COAL INDUSTRY OF NANCOUVER ISLAND AND OF A RICH MINERAL BELT.

Nestled under the shadow of Mount Benson on a sheltered rock-bound bay, forming a perfect harbor, about eighty miles north of Victoria, is situated the city of Nanaimo, a city dependent in point of business upon laboring men, it is singularly exempt on the one hand from instances of extreme poverty, and on the other from cases of marked affluence.



MAYOR MANSON, Nanaimo.

Situated in the midst of rich mineral resources, the city seems destined to some day be the centre of great industrial activity. Coupled with this is the marked advantage which it possesses of being located on a harbor spacious and on the east coast of Vancouver Island, a harbor which requires little attention in the way of dredging to keep its waters deep enough to float the largest of ocean going vessels.

Below, in the intervening space, is spread the valley forming the farm of the New Vancouver Coal Company, and the Five Acre lots cultivated by the employees of the company, upon which comfortable homes, surrounded by orchards, have been built.

At first a Hudson Bay post, and the old bastion from which the early miners of the company protected themselves against the Indians still stands today, yet the pulse of the commercial life of the city depends altogether upon the coal market, and the slightest tendency towards depression in connection with that market is immediately felt in the business of the city.

The growth of the city has been gradual. At first a Hudson Bay post, and the old bastion from which the early miners of the company protected themselves against the Indians still stands today, yet the pulse of the commercial life of the city depends altogether upon the coal market.

The situation of the city itself is a most picturesque one. Viewed from the water as the entrance to the harbor is made, the city proper rises gradually from the water front to the summit of Hospital Hill.

The situation of the city itself is a most picturesque one. Viewed from the water as the entrance to the harbor is made, the city proper rises gradually from the water front to the summit of Hospital Hill.

of lighting, including both electric and gas lights, are in use, while connection by telephone is had not only throughout the city but by means of the long distance line with Victoria and all intervening points on the island.



GENERAL VIEW OF BUSINESS SECTION, NANAIMO CITY.

At the present time there are employed in the mines about 800 men. The main shaft is known as No. 1, and is sunk within the city limits. This shaft is 624 feet in depth and from its connection is made with the Protection Island workings and the Newcastle workings. The

At the present time there are employed in the mines about 800 men. The main shaft is known as No. 1, and is sunk within the city limits.

At the present time there are employed in the mines about 800 men. The main shaft is known as No. 1, and is sunk within the city limits.

not a mining company, but, on the contrary, was more interested in other lines of trade. They therefore disposed of their coal measures in 1892 to the Vancouver Coal Company, who at once purchased the work vigorously forward.

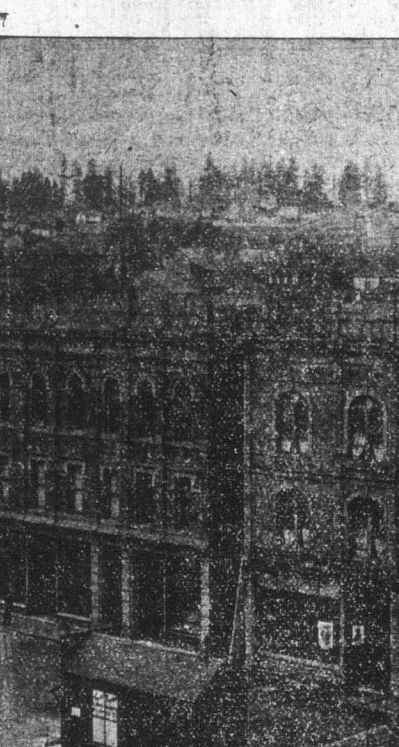


At the present time there are employed in the mines about 800 men. The main shaft is known as No. 1, and is sunk within the city limits.

At the present time there are employed in the mines about 800 men. The main shaft is known as No. 1, and is sunk within the city limits.

At the present time there are employed in the mines about 800 men. The main shaft is known as No. 1, and is sunk within the city limits.

are in use. These afford every facility for the quick filling of coal into the carriers which call regularly. In addition to these bins have latterly been provided which are very convenient, lacking, however, the perfection of the bunkers.

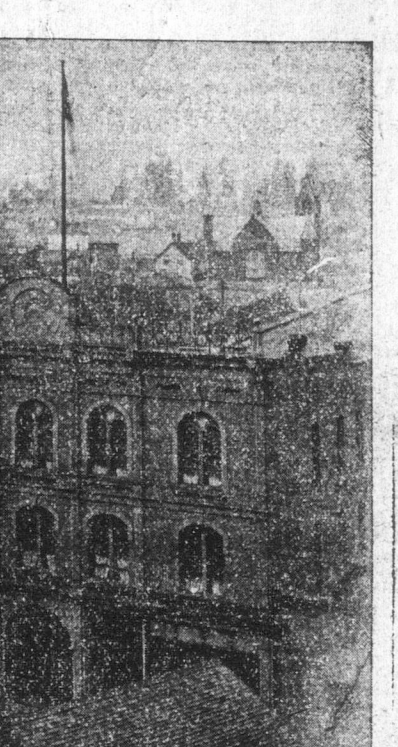


At the present time there are employed in the mines about 800 men. The main shaft is known as No. 1, and is sunk within the city limits.

At the present time there are employed in the mines about 800 men. The main shaft is known as No. 1, and is sunk within the city limits.

At the present time there are employed in the mines about 800 men. The main shaft is known as No. 1, and is sunk within the city limits.

are in use. These afford every facility for the quick filling of coal into the carriers which call regularly. In addition to these bins have latterly been provided which are very convenient, lacking, however, the perfection of the bunkers.



At the present time there are employed in the mines about 800 men. The main shaft is known as No. 1, and is sunk within the city limits.

At the present time there are employed in the mines about 800 men. The main shaft is known as No. 1, and is sunk within the city limits.

At the present time there are employed in the mines about 800 men. The main shaft is known as No. 1, and is sunk within the city limits.



OLD H. B. BASTION, Nanaimo.

similar works. The foundry has on hand a consignment of Bessemer pig iron which has been smelted at the foundry. Tests of this iron for the purposes for which it is required are being carefully carried on in the works, so that ultimately a very considerable amount of the iron used in the works may be derived from that source.

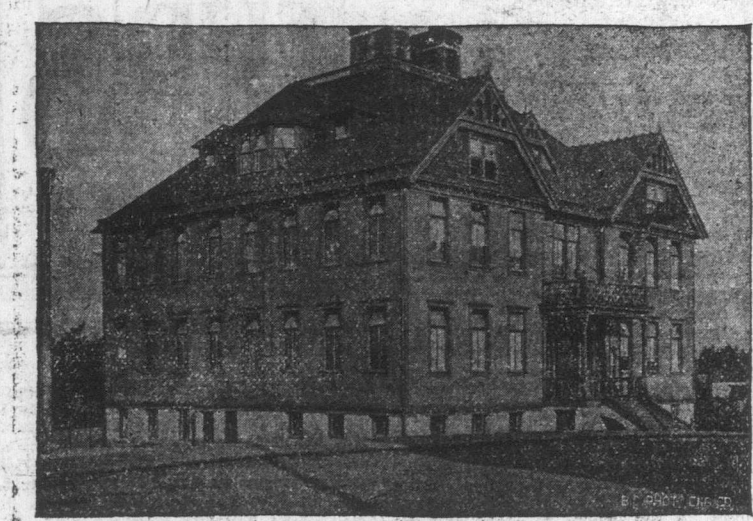
The Union Brewing Company, owned by local capitalists, does a very extensive trade. Under the management of Henry Reide, improvements have from time to time been made. A visit to Milwaukee and the cities of the east and to Germany and Austria was undertaken last year by Mr. Reide for the purpose of getting the latest ideas in connection with the brewing of beer.

Departure Bay, only three miles from Nanaimo harbor, is regarded as a superior harbor to that of Nanaimo. It was formerly the shipping point for both East Wellington coal and also the Northfield mines. It is now utilized by the Hamilton Powder Works, who have a branch of their works established there.



MILLSTREAM FALLS, NEAR NANAIMO CITY.

near the water front to remind visitors of the fact that that historic company laid the foundation of the city, it has now business blocks of a character to do credit to any city. Realizing that it is destined to be more than a mere coal mining camp, provision has been made as the years went by for permanent improvements in the city.

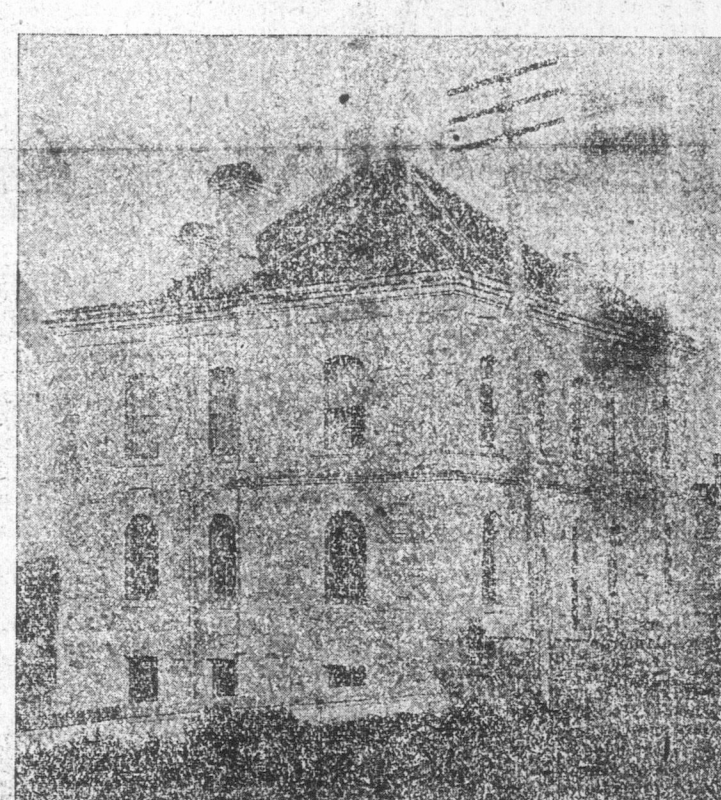


CENTRAL SCHOOL, NANAIMO.

exist at Nanaimo. The development of the mines spread from this, and about 1853 the Hudson Bay Company commenced the business of coal mining on rather an extensive scale. About what is now the most populous parts of the city shafts were sunk and tunnels driven in the work of getting the coal.

At the present time there are employed in the mines about 800 men. The main shaft is known as No. 1, and is sunk within the city limits.

At the present time there are employed in the mines about 800 men. The main shaft is known as No. 1, and is sunk within the city limits.



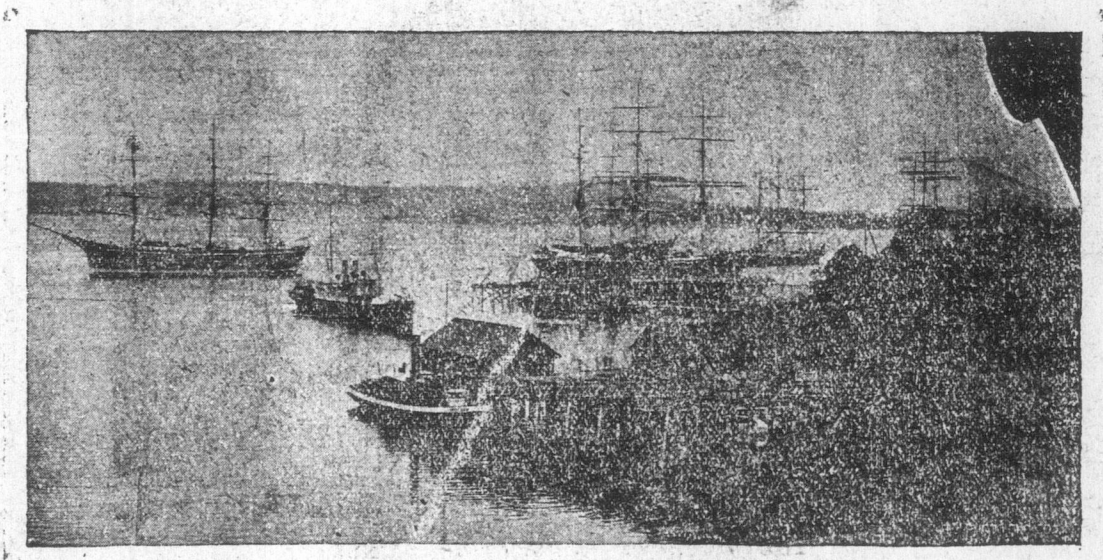
POST OFFICE, NANAIMO CITY.

towed a considerable supply of logs from that place. Work finer in quality than the production of rough lumber has also occupied the attention of the management. The finest qualities of mouldings, cornices, etc., are being manufactured, and in some instances requiring special office fixtures and similar work the work turned out by this mill has been such as to compare most favorably with any produced.

The foundry, under Mr. Dobson, has also of late extended its line of operations. It has taken up work never before attempted in the works. Among these were the furnishing of hydrants for the waterworks department, and

Newcastle Island and the Newcastle townsite. This channel affords a passage for steamers and is protected from all winds.

Nanaimo's citizens are lovers of outdoor sports, and every form of game has many ardent devotees in the city. With splendid facilities for boating, it is but natural that yachting and rowing should be indulged in to a considerable extent.



NANAIMO HARBOR, SHOWING SHIPS AWAITING COAL CARGOES.

Made In Victoria. The Half-Tone Engravings in this number of the Times were made by The B. C. Photo Engraving Co.

Vertical text on the far left edge of the page, including 'TREE CUTTINGS', 'EVENING', 'Docks Recom Should Be', 'Improvement of', 'at length', 'of council', 'the Voters', 'the present Aid', 'Cox, Ald.', 'Elworthy', 'aid.', 'public state', 'arrange rates', 'excessive or', 'ships to the', 'He said that', 'the wharf', 'ton, which', 'e, if desired', 'ld pay dock-', 'day for the', 'at half the', 'the subject', 'ved the fol-', 'Mr. Hall', 'posed as it', 'City Coun-', 'nd Voters', 'y the mem-', 'the Domin-', 'Col. Ander-', 'marine and', 'arrival here', 'is the unan-', 'of Victoria', 'nt take steps', 'proper condi-', 'of our', 'shed to urge', 'Have an in-', 'whole har-', 'soundings', 'be a definite', 'sents and to', 'same, and', 'all be ready', 'arrangement', 'the govern-', 'above sur-', 'ovement for', 'lically carry', 'requested to', 'ion govern-', 'maintaining the', 'after the', 'ad, to carry', 'upper har-', 'redged there', 'its bordering', 'as a survey', 'showed the', 'feet. The', 'own here as', 'through, and', 'ained in the', 'e railway', 'was, how-', 'on the inner', 'the was re-', 'The best', 'was to keep', 'the smaller', 'pression at', 'wharf was', 'g, and that', 'the inner', 'owners of', 'the thereby', 'ution:', 'nted to re-', 'as are ne-', 'safe naviga-', 'it suffi-', 'classes of', 'om Victoria', 'blows:', 'to Victoria', 'depth of at', 'o allow ves-', 'w frequent-', 'ave at any', 'of the bar', 'shoal point', 'he silt from', 'outflow of', 'Tuzo and', '18 feet at', 'ke being ob-', 'ation of our', 'red from the', 'depth of the', 'feet at low', 'and that the', 'or and the', 'redder rocks', 'n, the upper', 'sealing feet', 'wharves and', 'the removal', 'econom of', 'shipping fre-', 'were car-', 'to the fill', 'reval to be', 'Dominion', 'all here.', 'TSAND.', 'cky' Bald-', 'n, has sold', 'great race', '00, says a', 'times. She', 'ness.', 'Compon-', 'shly by over', 'al. Ladies ask', 'non Best Com-', 'p. 1114 and', 'No. 1, 81 per', 'per box. Send', 'two 2-cent', 'index. Can be', 'ended by all', 'Victoria at'