

THE EVENING TIMES AND STAR, ST. JOHN, N. B., MONDAY, JUNE 7, 1915

EXPIRED AT FOOT  
OF THE CRUCIFIXWounded Soldier Dragged  
Himself to Cross to Die

## PATHOS OF BATTLEFIELD

Miracle How Any Escaped in  
the Four Days of Hard Fighting  
—Scenes From the Battlefield

Coburg, Ont., June 7.—Sergeant Kenneth Haig, who went to the front with the B. C. Horse, writing to his parents here says:—

For four days we were in a hell upon earth when things were at the worst. Our battalion was in the front line when it started, but our company was the reserve and we were subject to some awful shell fire all the time. When the battle started just about 6 p. m. we were sent soon to help the Highland Brigade. It was a wild fight. German heavy shell

**Hot Weather Refreshers at Philips'** Douglas Ave. and Main

**FRESH FRUIT SYRUPS IN THE FOLLOWING FLAVORS:**  
Lemon, Raspberry, Strawberry, Pineapple, Cherry, Orange and Lime (large bottles) 25c. each  
Crosse & Blackwell's Lemon Squash. 25c. bot.  
Monsieur Laine Juice. 40c. bot.  
Blue Ribbon Ginger Ale. 80c. and \$1.25 doz.  
Call up Main 888—We'll Deliver Your Order Promptly.

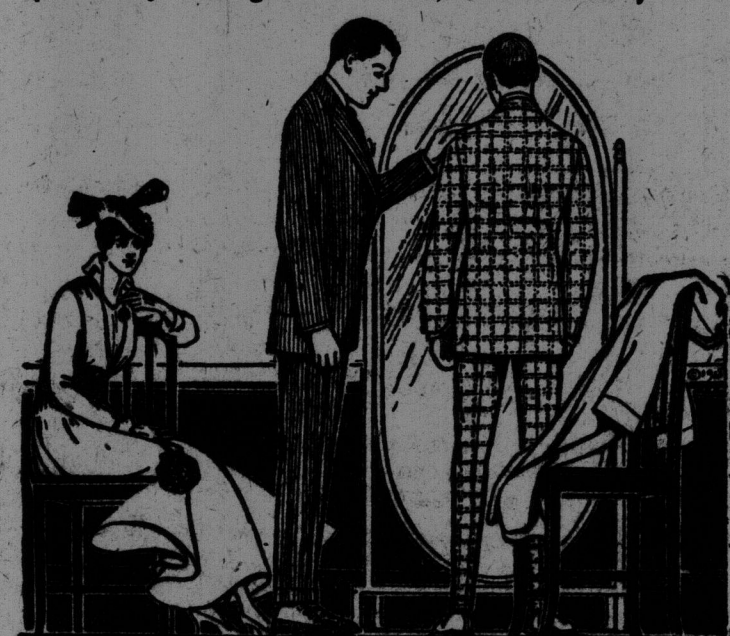
**PIONIO SPECIALS**  
Fresh Boiled Ham, always nice, machine sliced. 40c. lb.  
Ripe Olives, 25c. Stuffed Olives, 18c. to 60c.  
Queen Olives, 20c. to 75c. bot.  
Maconochie's Finest Pickles (small bottles, in Walnuts, Pearl Onions, Gherkins, Chow Chow and Mixed. 15c. bot.

## FINANCIAL

NEW YORK STOCK MARKET  
Quotations furnished by private wire of J. M. Robinson & Sons, St. John, N. B.

	Monday, June 7.	Monday, June 7.	Monday, June 7.
	Previous Closing	Opening	Now
Am. Copper	74 1/2	75 1/2	75 1/2
Am. Car & Ferry	84 1/2	84 1/2	84 1/2
Am. Locomotive	48 1/2	48 1/2	48 1/2
Am. Beet Sugar	48	48	48
American Ice	80 1/2	80 1/2	80 1/2
American Sugar	108	108 1/2	108 1/2
Am. Steel Poles	88	88 1/2	88 1/2
Am. Smelters	78 1/2	78 1/2	78 1/2
Anaconda Mining	88 1/2	88 1/2	88 1/2
Atch. To & S. P.	101	101	101
B. & O.	78 1/2	78 1/2	78 1/2
C. & P. R.	108	108 1/2	108 1/2
Chino Copper	47 1/2	47 1/2	47 1/2
Chl. & N. West.	138 1/2	138 1/2	138 1/2
Ches. & Ohio	40 1/2	40 1/2	40 1/2
Colo. Fuel Iron	80 1/2	80 1/2	80 1/2
Distillers Securities	21 1/2	21 1/2	21 1/2
Erie	28 1/2	28 1/2	28 1/2
General Electric	164	164 1/2	164 1/2
Gr. North pfd.	118 1/2	118 1/2	118 1/2
Interborough	28 1/2	28 1/2	28 1/2
Interborough pfd.	78	78	78
Lehigh Valley	148 1/2	148 1/2	148 1/2
Missouri Pacific	11 1/2	11 1/2	11 1/2
National Lead	64 1/2	64 1/2	64 1/2

Open Friday Evening Until 10 P.M., Closed Saturday 1 P.M.



Look at the back! That's what tells the story of good tailoring. It's much easier to "put up a good front" than a smooth back. In the back, front, fabric and work of our Spring suits, style and fit are all united.

Here's a special for the special man who practices efficiency in everyday matters—a suit of plain grey, tartan plaid, or stripes for \$15.

Others \$12.50 to \$30.

White flannel or serge trousers, \$3.45 and \$5. Striped flannels, \$4.00.

SOLE AGENT 20TH CENTURY GARMENTS.

A. GILMOUR, 68 KING ST.

Wake Up!  
New Brunswick!

This World War Demands the Supreme  
Effort of a United Empire  
Shall Our Province Fall Behind?

It should not be supposed that contributions of a couple of thousand men a few odd dollars, some barrels of potatoes and boxes of socks constitute our rightful sacrifice. So far not more than a handful of people in all this country have any actual realization of what the war means. These few have given their husbands or their sons to the cause of Empire. The remainder have done nothing in comparison with their abilities and their opportunities.

Our national life, our peace, our prosperity and our happiness are so dependent upon the well-being of the British Empire that only by playing our part in that Empire can we maintain our fortunate position.

Up to the present ninety-nine per cent. of us do not realize what sacrifice means, nor what is being endured by those nearer to the firing line than we are. We must give, not only of our material wealth, but of our blood, and not niggardly, but with a generous hand.

None of us wish to part with our husbands and our children, but it is better that they should serve the Empire and save our homes than that our enemies should triumph and all that we held dear be taken from us.

*"For Romans in Rome's quarrel  
Spared neither land nor gold,  
Nor son nor wife, nor limb nor life,  
In the brave days of old."*

The 55th Regiment still requires five hundred men from New Brunswick. These men must be furnished at once, and must be recruited from New Brunswick homes. We cannot ask strangers to take our places. The duty before us is clear, however hard the part may seem. Some will lose their lives; others will be maimed; many will return.

MEN OF NEW BRUNSWICK—Once upon a time there was a man who said that he would rather be a live coward than a dead hero.

What is Your Choice at the Present Time?  
The Question is Up to You Today!

New York Central	87 1/2	88 1/2	88 1/2
North Pacific	106 1/2	106 1/2	106 1/2
Pacific Mail	25 1/2	25 1/2	25 1/2
Pennsylvania	107 1/2	107 1/2	107 1/2
Penn. Gas	116	116	116
Pressed Steel Car.	47 1/2	47 1/2	47 1/2
Reading	148 1/2	148 1/2	148 1/2
Republic Ir. & St.	28 1/2	28 1/2	28 1/2
Rock Island (old)	20 1/2	20 1/2	20 1/2
Soo Railway	118	118	118
South Pacific	88 1/2	88 1/2	88 1/2
St. Paul	91 1/2	91 1/2	91 1/2
Southern Ry.	126 1/2	126 1/2	126 1/2
Union Pacific	127 1/2	127 1/2	127 1/2
U. S. Rubber	68 1/2	68 1/2	68 1/2
U. S. Steel	29 1/2	29 1/2	29 1/2
U. S. Steel pfd.	110 1/2	110 1/2	110 1/2
Utah Copper	70 1/2	70 1/2	70 1/2
Vir. Caro Chem.	31	31	31
Western Electric	97 1/2	97 1/2	97 1/2
Western Union	67 1/2	67 1/2	67 1/2
United Fruit	188 1/2	188 1/2	188 1/2

THE LOTTERY OF LOVE;  
OPERA HOUSE TONIGHTStrong Company in Daly's Noted  
Comedy Promises Excellent Entertainment

A first-class comedy, presented by a cast of players of high standing in the dramatic profession, will be offered at the Opera House tonight, Tuesday and Wednesday, with a special matinee on Wednesday only. "The Lottery of Love" is the play. It was written by Augustin Daly, one of the most famous and successful of American authors and producers, and was first produced with John Drew and Ada Hahn as joint stars. In this play they toured for two successive seasons. Its merit as a play of interest and entertainment is unquestioned.

The company presenting it here is styled the Orpheum Stock Company, and has in its ensemble several actors and actresses who are very well known on the stage. In the leading roles are Eleanor Flowers and Walter J. Connolly. Miss Flowers has been with the Wm. A. Brady force for several seasons in prominent roles, her last season being with one of "Bought and Paid For" companies, playing the leading part. Mr. Connolly has been prominent in the support of E. A. Sothern and Julia Marlowe for the last three seasons. Other members of the company have been connected with leading stock companies and road attractions, all of high grade.

There is no question that the presentation of "The Lottery of Love" will be far superior to what is usually seen with a stock company. An item of interest in connection with the play is that the company was fortunate in securing the original prompt book used by Mr. Daly from the old Union Square Theatre, thus ensuring a perfect production, complete to the smallest detail. Seats for all performances are now on sale.

## WAYSIDE GLEANINGS

Introducing a Cat, a Dog, and The First N. B. Jersey Cow—Damaged Wheat as Food and Fertilizer

There are dogs and cats—and also cats. Incidentally it may be observed that every wire entanglement around a flower bed in King Square is an additional proof that the dogs of St. John are its masters. This paragraph, however, has especially to do with a cat and a dog.

Quite a number of years ago a newspaper man went out with David Magee to Stonycroft Farm, two miles beyond Robbsey, to get a little country atmosphere. He also got a story, quite by the way, of a cat he saw at the farmhouse, which was mothering an injured chick of diminutive size, that found the warmth of the cat's fur, as she coiled around it, a very delectable source of comfort. It was a fine exhibition of sympathy and of the mother instinct, quite unexpected as between a cat and a chicken. Last week the same newspaper man went out again with Mr. Magee, and this introduces the dog. It is a collie of mature years, and also has an interest in chickens. A bantam had a small brood, and one of the number died and was laid away. The collie said nothing at the time, but as soon as possible after the funeral, went for the dead chick, dug it out and carried it back to the hen. If this was not sympathy, what was it?

The late David Magee was the first man to import a Jersey cow into the province. This information was imparted to the newspaper man by David, Jr., as they inspected the Jersey cows in the barn at Stonycroft. Of the quality of Jersey milk, butter, and cream with rind, the city man learned later in the pleasant dining room, where fresh eggs, laid by the White Wyandottes, of

## We Believe

that we are right in conclusion, that thinking people do not want bargain glasses.

If you will favor us with your patronage we will see to it that you pay only a fair price, and will also promise you satisfaction, so much so that you will be perfectly willing to recommend our place as a safe and reliable place for your friends to come in search for eye help.

K. W. EPSTEIN & CO.  
Optometrists and Opticians  
193 Union St.  
Open Evenings

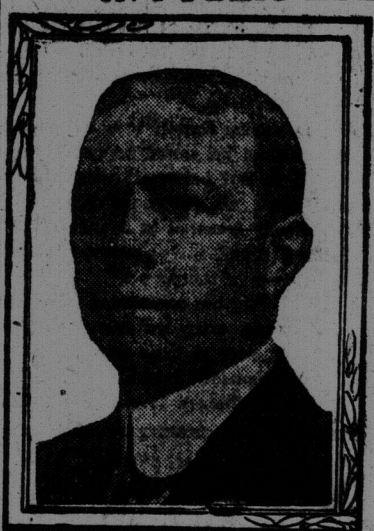
which Harry Magee has a large flock and many efficient, were also on the bill of fare. What a city man does to such food, with home-made bread and cake and other things, may perhaps be left to the imagination.

One would not naturally look at Stonycroft, even if he were a detective for evidence that the L. C. R. elevator at St. John was destroyed by fire. But it is there. Mr. Magee bought a large quantity of the damaged wheat. Some was fit only for top-dressing, and was spread on part of a large field by the highway. The grass on that part of the field today is so much taller and thicker than on the rest of it as to prove the exceptional value of the novel dressing.

But most of the damaged grain was good for food for the live stock, and it has not yet been exhausted. The visitor picked up some dried kernels that had lain out doors all winter, and when crushed they showed the white flour within, apparently still pure, which seemed certainly an odd fact, after the fire, the heating, and the exposure for so long a period.

Harry Magee had finished seeding a large field with oats, and had another ready for buckwheat, and the furrows ready for a large field of potatoes. The season has been rather late for farming. The apple trees had not yet blossomed, and garden vegetables are not as far advanced as in most years.

It is good for the city man to go out and get the air of the country, the smell of the fields, the broad views over field and wood and river, and to hear the song of birds, forgetting for a little the worries of office and street. Moreover, a trip along the road between the city and Quispamsis is especially interesting because of the changes brought about by the annually growing number of cottages all along the route.

FINANCIAL MEN  
IN PUBLIC EYE

L. A. CAMPBELL,  
Vice-President and General Manager  
of the West Kootenay Power and  
Light Company, Limited.

The break in the street car line at the corner of Princess and Sydney streets has been repaired and the cars were running on their regular schedule yesterday. Another dispute between the city and the street railway company has arisen in connection with the junction at Kane's corner where the East St. John line branches off. The trouble is over the repairs to the roadway which would be necessary where the intersection is installed.

Would it occur to anyone that it costs New York city as much to conduct elections as it does to support all its prisons and penitentiaries, with their thousands of inmates, for an entire year?

The total production of steel rails in the United States in 1914 was \$1,945,098 tons.