

DON'T OVERLOOK THE DOUBLE CUTTING BAND

WITH OUR
MILLER'S PATENT BUFFER

It Makes

True Lumber.
Every Board Being Alike.

Increases

Daily Cut 30% at the Expense of
One Extra Man.

Quality is not Sacrificed

Every one of the Purchasers of the 30
odd WATEROUS DOUBLE CUTTERS in operation
Will Tell You.

Surface is Much Improved at no ex-
pense to Grade of Lumber.

We Can Give You Their Names— Why
Not Investigate.

WHEN WRITING

Also Ask Their Opinion of

The Waterous Cast Steel Carriage

Which Many of Them Have in Use.

It is **LIGHT, ACCURATE, SOLID**

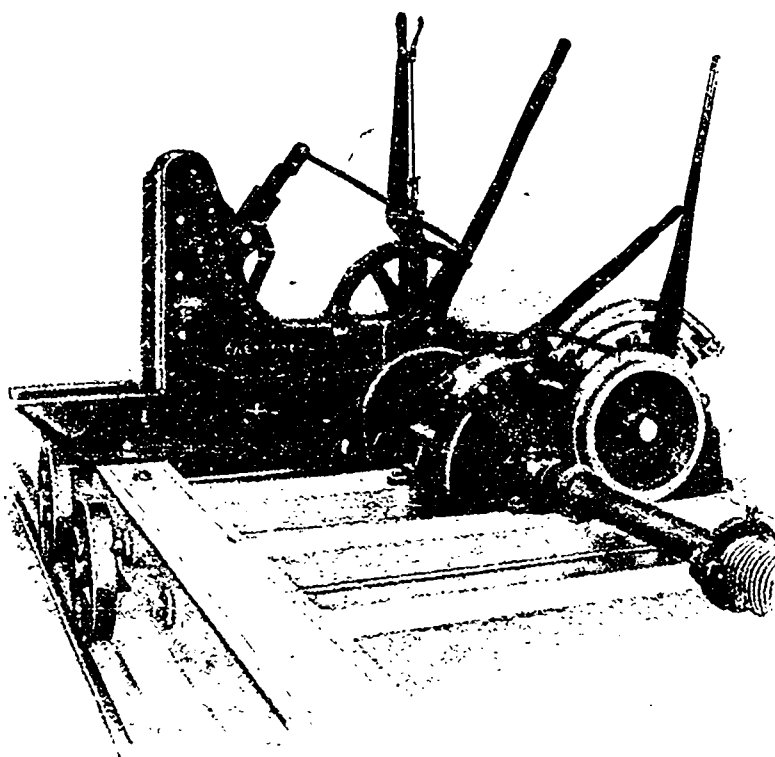
Practically Unbreakable.

Will Stand the Hardest Nigger Pounding.

Frames of Oak. Bolts do not Work Loose.

The Several Sizes Open 42, 50, 60, 72 and 84 Inches.

Note our No. 2 Set Works, 4 inch Face Cut Steel
Ratchet, Pawls Full Width of Wheel Face

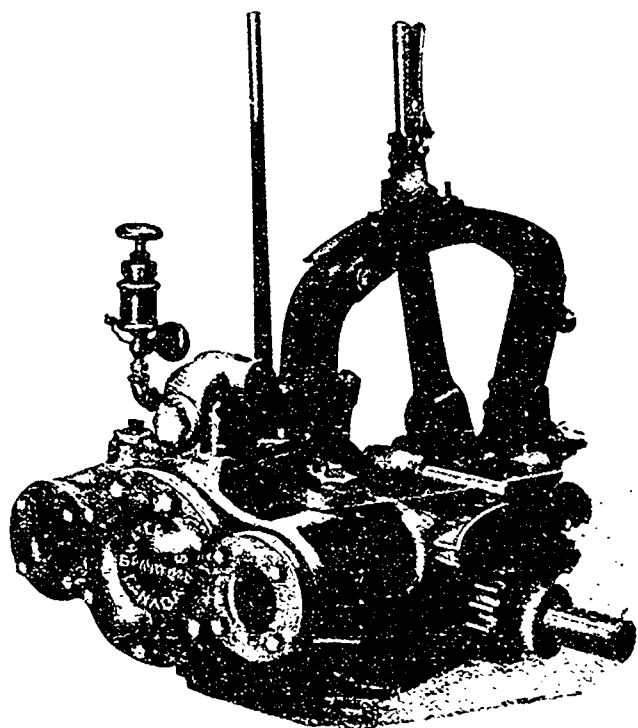


AGAIN—Over Half of These Up-To-Date Lumbermen Have

OUR STEAM SETTER

Another Time Saver.

It Increases Daily Cut 5 to 8%—Relieves Setter of Heavy Work—
He Can Dog—Dispensing with Third Man on Carriage.



Investigate the New

WATEROUS BIG CHAMPION EDGER

With Working Space 54 to 96 Inches, 4 to 8 Saws, and
Cluster Collar if Desired for Ripping Small Cants.

Order Early and Avoid Delay in Starting Next Spring

WATEROUS, Brantford, Canada